

## Product datasheet for **TA368198S**

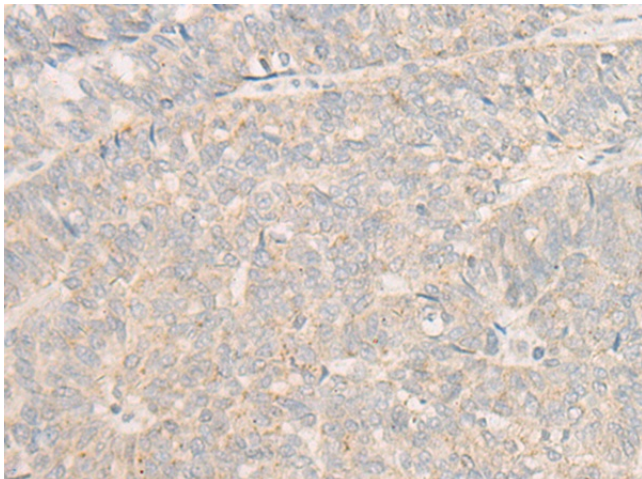
### **DOCK9 Rabbit Polyclonal Antibody**

#### **Product data:**

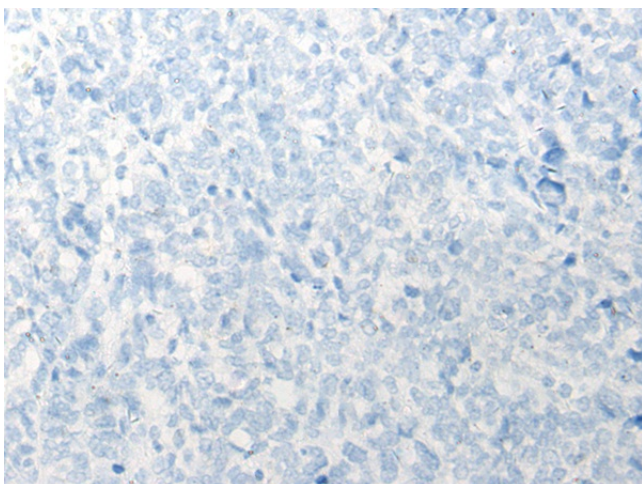
<b>Product Type:</b>	Primary Antibodies
<b>Applications:</b>	IHC
<b>Recommended Dilution:</b>	IHC: 20-100 Positive control: Human ovarian cancer Predicted cell location: Cytoplasm and Cell membrane
<b>Reactivity:</b>	Human
<b>Host:</b>	Rabbit
<b>Isotype:</b>	IgG
<b>Clonality:</b>	Polyclonal
<b>Immunogen:</b>	Synthetic peptide of human DOCK9
<b>Formulation:</b>	pH7.4 PBS, 0.05% NaN <sub>3</sub> , 40% Glycerol
<b>Purification:</b>	Antigen affinity purification
<b>Conjugation:</b>	Unconjugated
<b>Storage:</b>	Store at -20°C.
<b>Stability:</b>	1 year
<b>Gene Name:</b>	dedicator of cytokinesis 9
<b>Database Link:</b>	<a href="#">Entrez Gene 23348 Human Q9BZ29</a>
<b>Background:</b>	Guanine nucleotide-exchange factor (GEF) that activates CDC42 by exchanging bound GDP for free GTP. Overexpression induces filopodia formation.
<b>Synonyms:</b>	DKFZp686C11110; DKFZp686D2047; DKFZp686N04132; FLJ11949; FLJ16744; FLJ44528; FLJ45282; FLJ45601; KIAA1058; KIAA1085; OTTHUMP00000018601; ZIZ1; ZIZIMIN1



[View online »](#)

**Product images:**

Immunohistochemistry of paraffin-embedded Human ovarian cancer tissue using [TA368198] (DOCK9 Antibody) at dilution 1/20 (Original magnification: x200)



Immunohistochemistry of paraffin-embedded Human ovarian cancer tissue using [TA368198] (DOCK9 Antibody) at dilution 1/20, treated with synthetic peptide. (Original magnification: x200)