

Product datasheet for **TA368198**

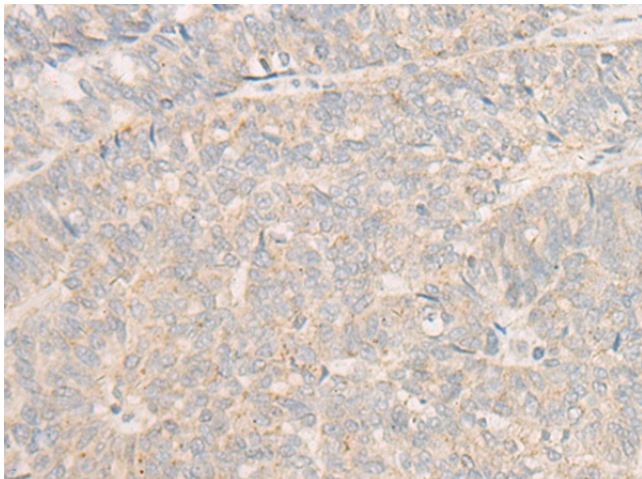
DOCK9 Rabbit Polyclonal Antibody

Product data:

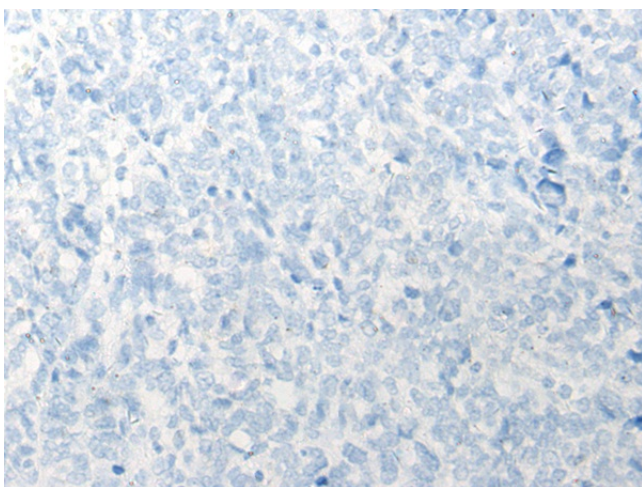
Product Type:	Primary Antibodies
Applications:	IHC
Recommended Dilution:	IHC: 20-100 Positive control: Human ovarian cancer Predicted cell location: Cytoplasm and Cell membrane
Reactivity:	Human
Host:	Rabbit
Isotype:	IgG
Clonality:	Polyclonal
Immunogen:	Synthetic peptide of human DOCK9
Formulation:	pH7.4 PBS, 0.05% NaN ₃ , 40% Glycerol
Concentration:	lot specific
Purification:	Antigen affinity purification
Conjugation:	Unconjugated
Storage:	Store at -20°C.
Stability:	1 year
Gene Name:	dedicator of cytokinesis 9
Database Link:	Entrez Gene 23348 Human Q9BZ29
Background:	Guanine nucleotide-exchange factor (GEF) that activates CDC42 by exchanging bound GDP for free GTP. Overexpression induces filopodia formation.
Synonyms:	DKFZp686C11110; DKFZp686D2047; DKFZp686N04132; FLJ11949; FLJ16744; FLJ44528; FLJ45282; FLJ45601; KIAA1058; KIAA1085; OTTHUMP00000018601; ZIZ1; ZIZIMIN1



[View online »](#)

Product images:

Immunohistochemistry of paraffin-embedded Human ovarian cancer tissue using TA368198 (DOCK9 Antibody) at dilution 1/20 (Original magnification: $\times 200$)



Immunohistochemistry of paraffin-embedded Human ovarian cancer tissue using TA368198 (DOCK9 Antibody) at dilution 1/20, treated with synthetic peptide. (Original magnification: $\times 200$)