

## Product datasheet for **TA368185S**

### DIS3 Rabbit Polyclonal Antibody

#### Product data:

Product Type:	Primary Antibodies
Applications:	IHC
Recommended Dilution:	IHC: 25-100 Positive control: Human liver cancer Predicted cell location: Cytoplasm or Nucleus
Reactivity:	Human
Host:	Rabbit
Isotype:	IgG
Clonality:	Polyclonal
Immunogen:	Synthetic peptide of human DIS3
Formulation:	pH7.4 PBS, 0.05% NaN <sub>3</sub> , 40% Glycerol
Purification:	Antigen affinity purification
Conjugation:	Unconjugated
Storage:	Store at -20°C.
Stability:	1 year
Gene Name:	DIS3 homolog, exosome endoribonuclease and 3'-5' exoribonuclease
Database Link:	<a href="#">Entrez Gene 22894 Human Q9Y2L1</a>

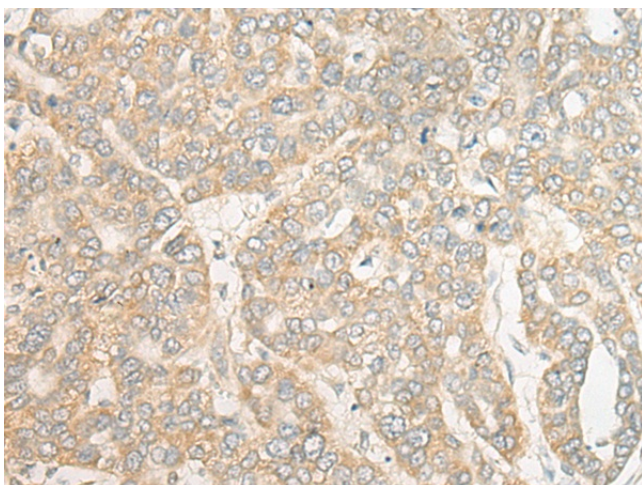
**Background:** The exosome is a multi-protein complex composed of several highly conserved subunits, some of which are 3' to 5' exoribonucleases. The complex is involved in a variety of cellular processes and is responsible for degrading unstable mRNAs that contain AU-rich elements (AREs) in their untranslated 3' regions. DIS3, also known as RRP44, is a 958 amino acid protein that localizes to both the cytoplasm and the nucleus and contains one PINc domain. Widely expressed with highest expression in testis, DIS3 functions as a component of the exosome exoribonuclease complex and is required for processing of 7S pre-RNA into a mature nuclear complex and, ultimately, for proper mitotic progression. Abnormal expression levels of DIS3 may be associated with colon cancer, suggesting a role for DIS3 in tumorigenesis. Multiple isoforms of DIS3 exist due to alternative splicing events.



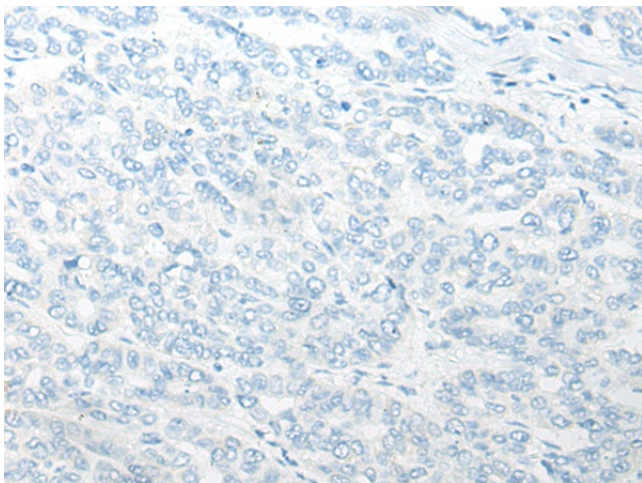
[View online »](#)

Synonyms: 2810028N01Rik; bA555G22.1; dis3p; DKFZp667L1817; EXOSC11; FLJ10484; KIAA1008; MGC33035; RP11-342J4.3; RRP44

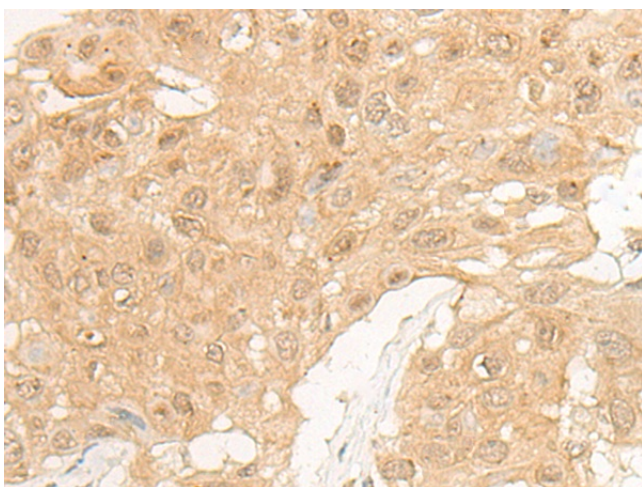
### Product images:



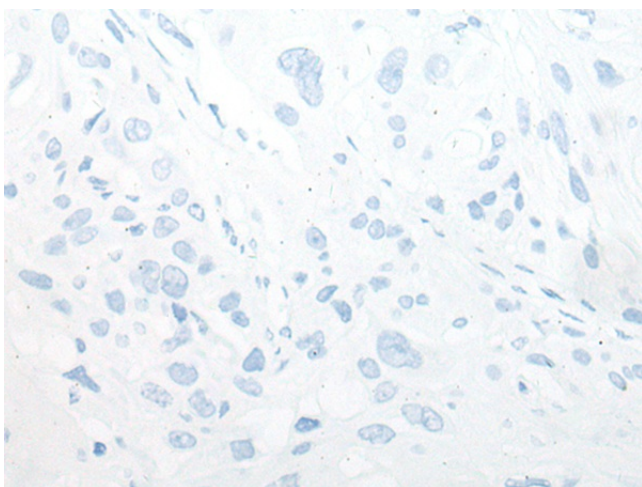
Immunohistochemistry of paraffin-embedded Human liver cancer tissue using [TA368185] (DIS3 Antibody) at dilution 1/20 (Original magnification: ×200)



Immunohistochemistry of paraffin-embedded Human liver cancer tissue using [TA368185] (DIS3 Antibody) at dilution 1/20, treated with synthetic peptide. (Original magnification: ×200)



Immunohistochemistry of paraffin-embedded Human esophagus cancer tissue using [TA368185] (DIS3 Antibody) at dilution 1/20 (Original magnification:  $\times 200$ )



Immunohistochemistry of paraffin-embedded Human esophagus cancer tissue using [TA368185] (DIS3 Antibody) at dilution 1/20, treated with synthetic peptide. (Original magnification:  $\times 200$ )