

Product datasheet for **TA368184**

DIP2 homolog B (DIP2B) Rabbit Polyclonal Antibody

Product data:

Product Type:	Primary Antibodies
Applications:	IHC, WB
Recommended Dilution:	WB: 200-1000 WB positive control: NIH/3T3 cell lysate IHC: 20-100 Positive control: Human brain Predicted cell location: Cytoplasm
Reactivity:	Human, Mouse
Host:	Rabbit
Isotype:	IgG
Clonality:	Polyclonal
Immunogen:	Synthetic peptide of human DIP2B
Formulation:	pH7.4 PBS, 0.05% NaN ₃ , 40% Glycerol
Concentration:	lot specific
Purification:	Antigen affinity purification
Conjugation:	Unconjugated
Storage:	Store at -20°C.
Stability:	1 year
Predicted Protein Size:	172 kDa
Gene Name:	disco interacting protein 2 homolog B
Database Link:	Entrez Gene 57609 Human Q9P265



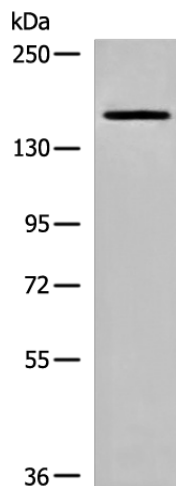
[View online »](#)

Background:

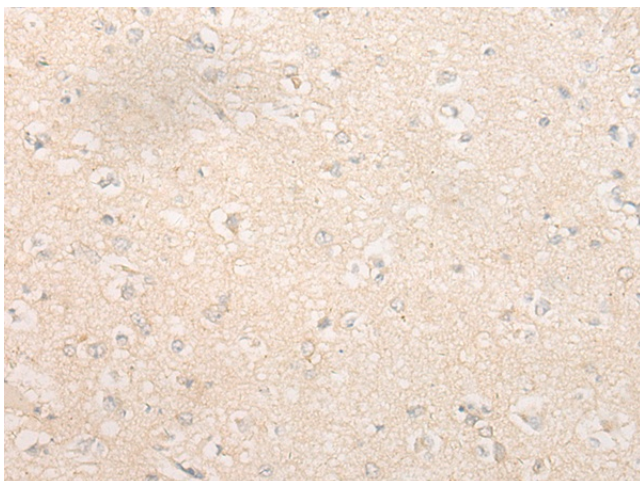
This gene encodes a member of the disco-interacting protein homolog 2 protein family. The encoded protein contains a binding site for the transcriptional regulator DNA methyltransferase 1 associated protein 1 as well as AMP-binding sites. The presence of these sites suggests that the encoded protein may participate in DNA methylation. This gene is located near a folate-sensitive fragile site, and CGG-repeat expansion in the promoter of this gene which affects transcription has been detected in individuals containing this fragile site on chromosome 12.

Synonyms:

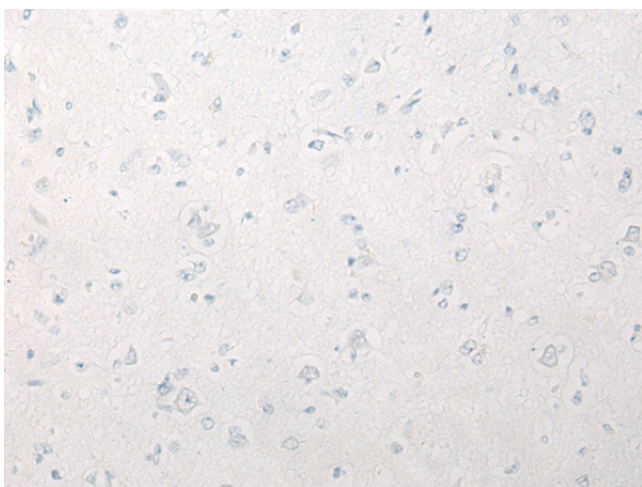
KIAA1463; MGC104005

Product images:

Gel: 6%SDS-PAGE
Lysate: 40 µg
Lane: NIH/3T3 cell lysate
Primary antibody: TA368184 (DIP2B Antibody) at dilution 1/200
Secondary antibody: Goat anti rabbit IgG at 1/8000 dilution
Exposure time: 5 minutes



Immunohistochemistry of paraffin-embedded Human brain tissue using TA368184 (DIP2B Antibody) at dilution 1/20 (Original magnification: ×200)



Immunohistochemistry of paraffin-embedded Human brain tissue using TA368184 (DIP2B Antibody) at dilution 1/20, treated with synthetic peptide. (Original magnification: ×200)