

Product datasheet for **TA368181**

DGCR6 Rabbit Polyclonal Antibody

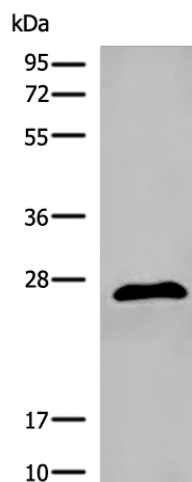
Product data:

Product Type:	Primary Antibodies
Applications:	IHC, WB
Recommended Dilution:	WB: 200-1000 WB positive control: 293T cell lysate IHC: 25-100 Positive control: Human brain Predicted cell location: Cytoplasm and Nucleus
Reactivity:	Human, Mouse
Host:	Rabbit
Isotype:	IgG
Clonality:	Polyclonal
Immunogen:	Synthetic peptide of human DGCR6
Formulation:	pH7.4 PBS, 0.05% NaN ₃ , 40% Glycerol
Concentration:	lot specific
Purification:	Antigen affinity purification
Conjugation:	Unconjugated
Storage:	Store at -20°C.
Stability:	1 year
Predicted Protein Size:	25 kDa
Gene Name:	DiGeorge syndrome critical region gene 6
Database Link:	Entrez Gene 8214 Human Q14129
Background:	DiGeorge syndrome, and more widely, the CATCH 22 syndrome, are associated with microdeletions in chromosomal region 22q11.2. The product of this gene shares homology with the Drosophila melanogaster gonadal protein, which participates in gonadal and germ cell development, and with the gamma-1 subunit of human laminin. This gene is a candidate for involvement in DiGeorge syndrome pathology and in schizophrenia.
Synonyms:	DGCR6

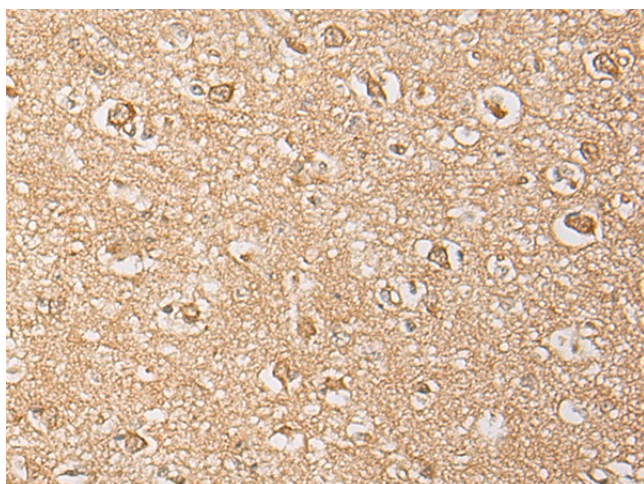


[View online »](#)

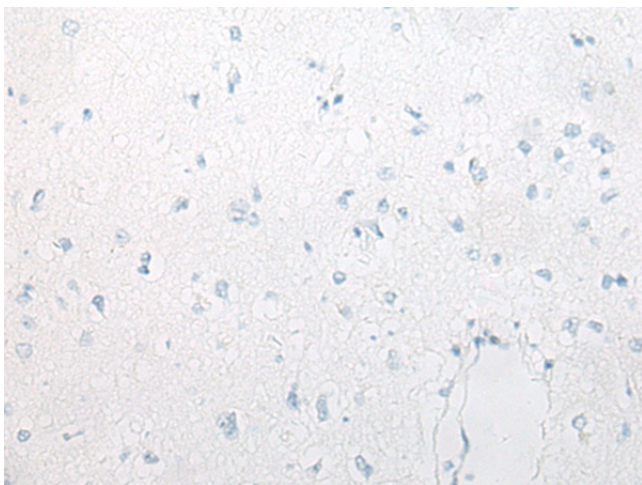
Product images:



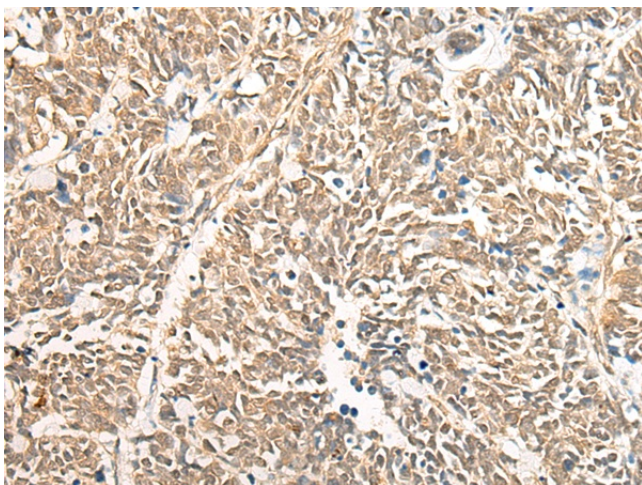
Gel: 12%SDS-PAGE
Lysate: 40 μ g
Lane: 293T cell lysate
Primary antibody: TA368181 (DGCR6 Antibody) at dilution 1/300
Secondary antibody: Goat anti rabbit IgG at 1/8000 dilution
Exposure time: 20 seconds



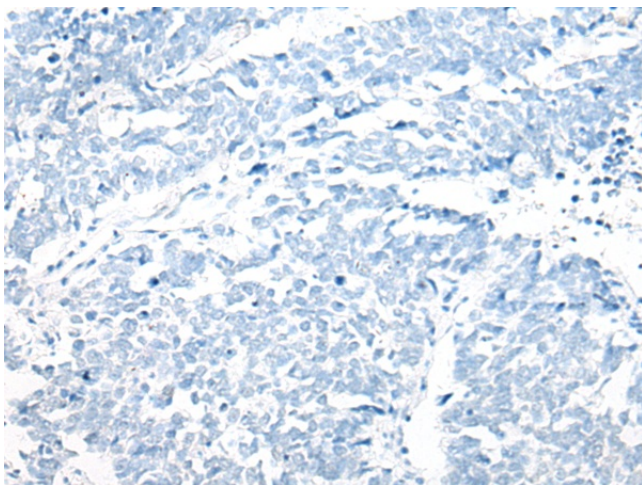
Immunohistochemistry of paraffin-embedded Human brain tissue using TA368181 (DGCR6 Antibody) at dilution 1/20 (Original magnification: \times 200)



Immunohistochemistry of paraffin-embedded Human brain tissue using TA368181 (DGCR6 Antibody) at dilution 1/20, treated with synthetic peptide. (Original magnification: x200)



Immunohistochemistry of paraffin-embedded Human lung cancer tissue using TA368181 (DGCR6 Antibody) at dilution 1/20 (Original magnification: x200)



Immunohistochemistry of paraffin-embedded Human lung cancer tissue using TA368181 (DGCR6 Antibody) at dilution 1/20, treated with synthetic peptide. (Original magnification: x200)