

Product datasheet for **TA368166S**

DDX56 Rabbit Polyclonal Antibody

Product data:

Product Type:	Primary Antibodies
Applications:	IHC, WB
Recommended Dilution:	WB: 200-1000 WB positive control: Hela \square 293T and HEPG2 cell lysates IHC: 20-100 Positive control: Human esophagus cancer Predicted cell location: Nucleus
Reactivity:	Human
Host:	Rabbit
Isotype:	IgG
Clonality:	Polyclonal
Immunogen:	Synthetic peptide of human DDX56
Formulation:	pH7.4 PBS, 0.05% NaN ₃ , 40% Glycerol
Purification:	Antigen affinity purification
Conjugation:	Unconjugated
Storage:	Store at -20°C.
Stability:	1 year
Predicted Protein Size:	62 kDa
Gene Name:	DEAD-box helicase 56
Database Link:	Entrez Gene 54606 Human Q9NY93



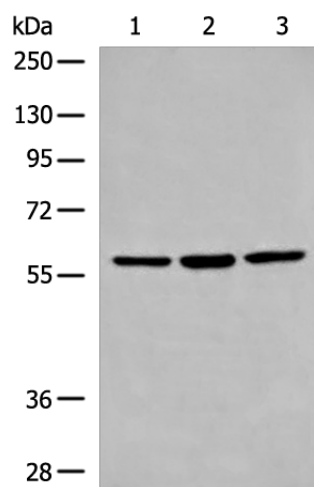
[View online »](#)

Background:

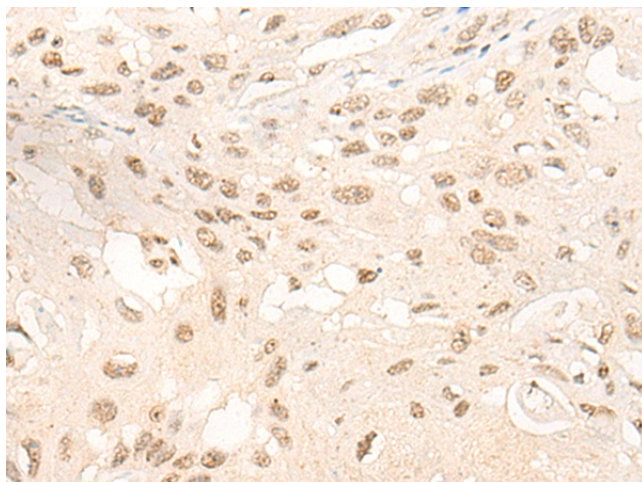
This gene encodes a member of the DEAD box protein family. DEAD box proteins, characterized by the conserved motif Asp-Glu-Ala-Asp (DEAD), are putative RNA helicases. They are implicated in a number of cellular processes involving alteration of RNA secondary structure such as translation initiation, nuclear and mitochondrial splicing, and ribosome and spliceosome assembly. Based on their distribution patterns, some members of this family are believed to be involved in embryogenesis, spermatogenesis, and cellular growth and division. The protein encoded by this gene shows ATPase activity in the presence of polynucleotides and associates with nucleoplasmic 65S preribosomal particles. This gene may be involved in ribosome synthesis, most likely during assembly of the large 60S ribosomal subunit. Multiple transcript variants encoding different isoforms have been found for this gene.

Synonyms:

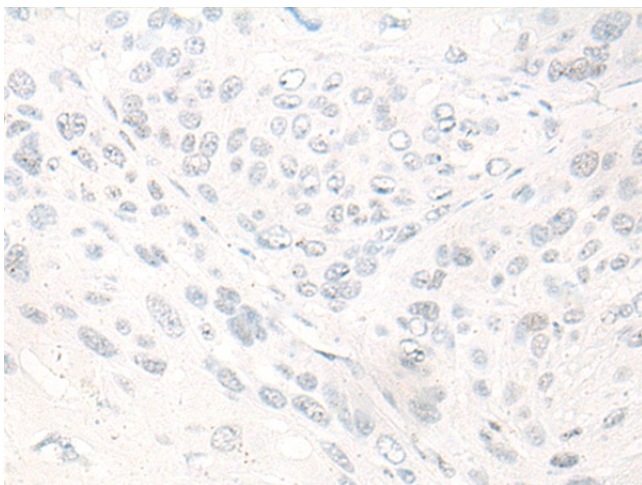
DDX21; DDX26; NOH61

Product images:

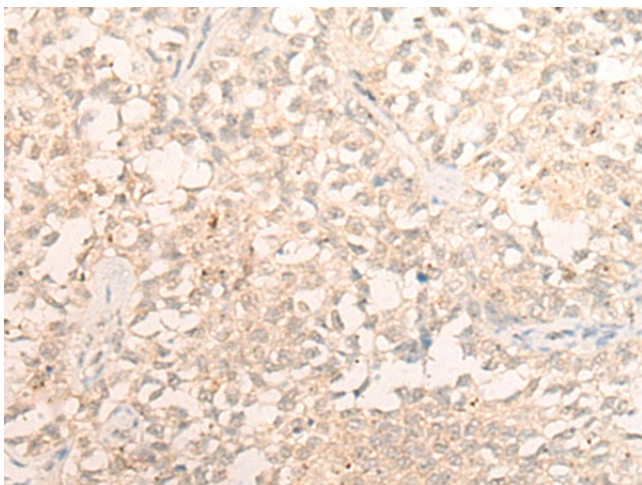
Gel: 8%SDS-PAGE
Lysate: 40 µg
Lane 1-3: HeLa
293T and HEPG2 cell lysates
Primary antibody: [TA368166] (DDX56 Antibody)
at dilution 1/300
Secondary antibody: Goat anti rabbit IgG at
1/8000 dilution
Exposure time: 7 seconds



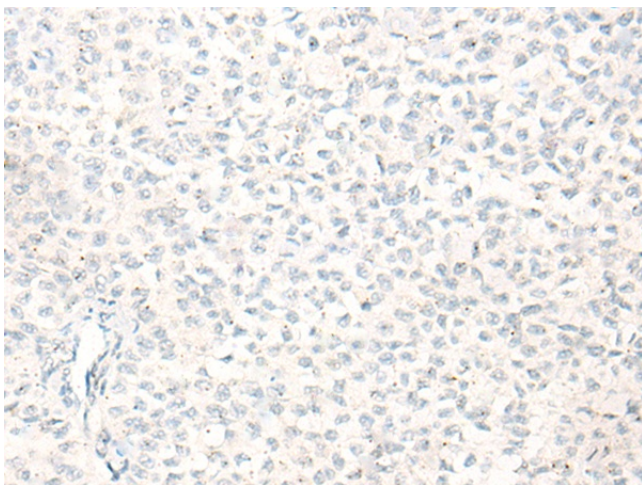
Immunohistochemistry of paraffin-embedded
Human esophagus cancer tissue using
[TA368166] (DDX56 Antibody) at dilution 1/20
(Original magnification: ×200)



Immunohistochemistry of paraffin-embedded Human esophagus cancer tissue using [TA368166] (DDX56 Antibody) at dilution 1/20, treated with synthetic peptide. (Original magnification: ×200)



Immunohistochemistry of paraffin-embedded Human ovarian cancer tissue using [TA368166] (DDX56 Antibody) at dilution 1/20 (Original magnification: ×200)



Immunohistochemistry of paraffin-embedded Human ovarian cancer tissue using [TA368166] (DDX56 Antibody) at dilution 1/20, treated with synthetic peptide. (Original magnification: ×200)