

Product datasheet for **TA368159S**

DAPP1 Rabbit Polyclonal Antibody

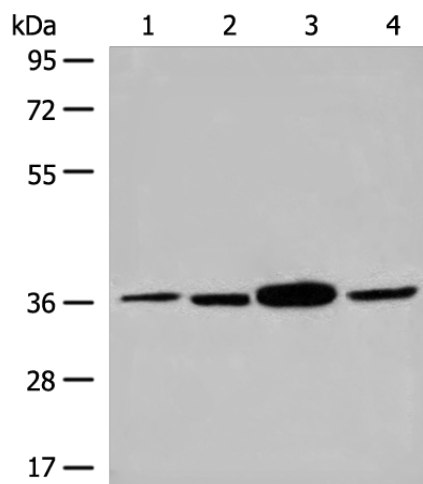
Product data:

Product Type:	Primary Antibodies
Applications:	IHC, WB
Recommended Dilution:	WB: 200-1000 WB positive control: Human kidney tissue, Mouse heart tissue, Human left kidney and Human heart tissue lysates IHC: 10-50 Positive control: Human gastric cancer Predicted cell location: Cytoplasm
Reactivity:	Human, Mouse
Host:	Rabbit
Isotype:	IgG
Clonality:	Polyclonal
Immunogen:	Synthetic peptide of human DAPP1
Formulation:	pH7.4 PBS, 0.05% NaN ₃ , 40% Glycerol
Purification:	Antigen affinity purification
Conjugation:	Unconjugated
Storage:	Store at -20°C.
Stability:	1 year
Predicted Protein Size:	33 kDa
Gene Name:	dual adaptor of phosphotyrosine and 3-phosphoinositides 1
Database Link:	Entrez Gene 27071 Human Q9UN19
Background:	May act as a B-cell-associated adapter that regulates B-cell antigen receptor (BCR)-signaling downstream of PI3K.
Synonyms:	BAM32; DKFZp667E0716; hDAPP1

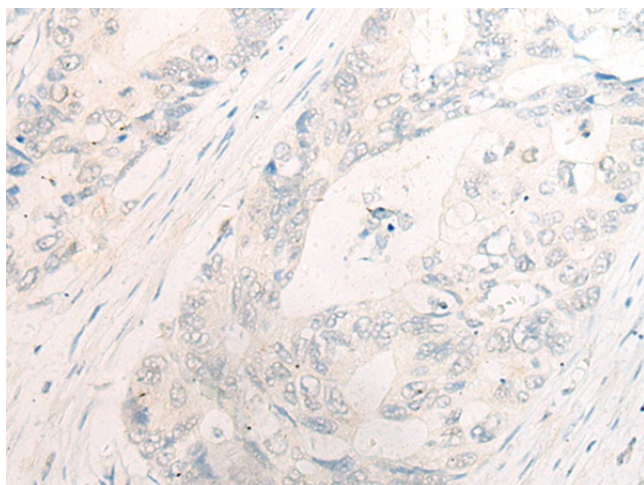


[View online »](#)

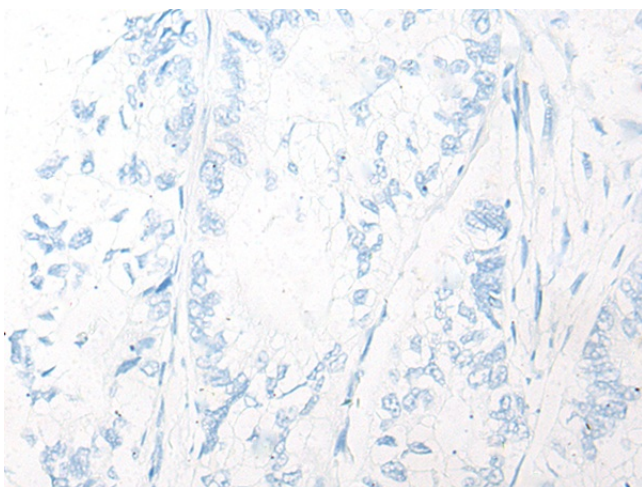
Product images:



Gel: 8%SDS-PAGE
Lysate: 40 μ g
Lane 1-4: Human kidney tissue
Mouse heart tissue
Human left kidney and Human heart tissue
lysates
Primary antibody: [TA368159] (DAPP1 Antibody)
at dilution 1/200
Secondary antibody: Goat anti rabbit IgG at
1/8000 dilution
Exposure time: 1 minute



Immunohistochemistry of paraffin-embedded
Human gastric cancer tissue using [TA368159]
(DAPP1 Antibody) at dilution 1/20 (Original
magnification: \times 200)



Immunohistochemistry of paraffin-embedded Human gastric cancer tissue using [TA368159] (DAPP1 Antibody) at dilution 1/20, treated with synthetic peptide. (Original magnification: $\times 200$)