

Product datasheet for **TA368159**

DAPP1 Rabbit Polyclonal Antibody

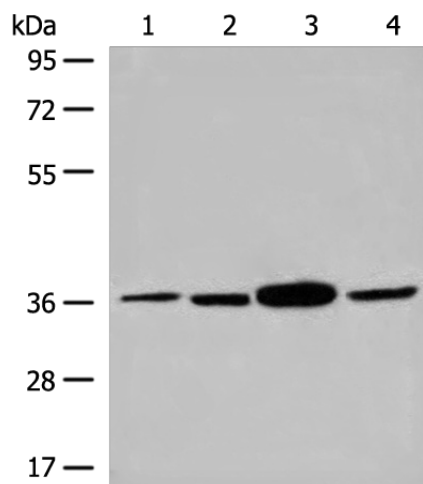
Product data:

| | |
|-------------------------|--|
| Product Type: | Primary Antibodies |
| Applications: | IHC, WB |
| Recommended Dilution: | WB: 200-1000 WB positive control: Human kidney tissue, Mouse heart tissue, Human left kidney and Human heart tissue lysates IHC: 10-50 Positive control: Human gastric cancer Predicted cell location: Cytoplasm |
| Reactivity: | Human, Mouse |
| Host: | Rabbit |
| Isotype: | IgG |
| Clonality: | Polyclonal |
| Immunogen: | Synthetic peptide of human DAPP1 |
| Formulation: | pH7.4 PBS, 0.05% NaN ₃ , 40% Glycerol |
| Concentration: | lot specific |
| Purification: | Antigen affinity purification |
| Conjugation: | Unconjugated |
| Storage: | Store at -20°C. |
| Stability: | 1 year |
| Predicted Protein Size: | 33 kDa |
| Gene Name: | dual adaptor of phosphotyrosine and 3-phosphoinositides 1 |
| Database Link: | Entrez Gene 27071 Human Q9UN19 |
| Background: | May act as a B-cell-associated adapter that regulates B-cell antigen receptor (BCR)-signaling downstream of PI3K. |
| Synonyms: | BAM32; DKFZp667E0716; hDAPP1 |

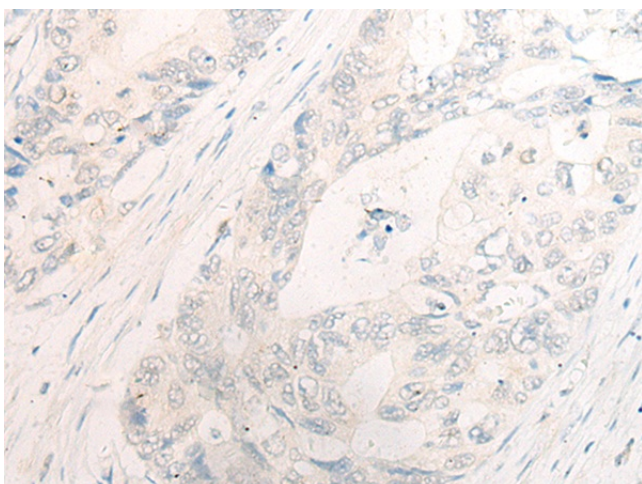


[View online »](#)

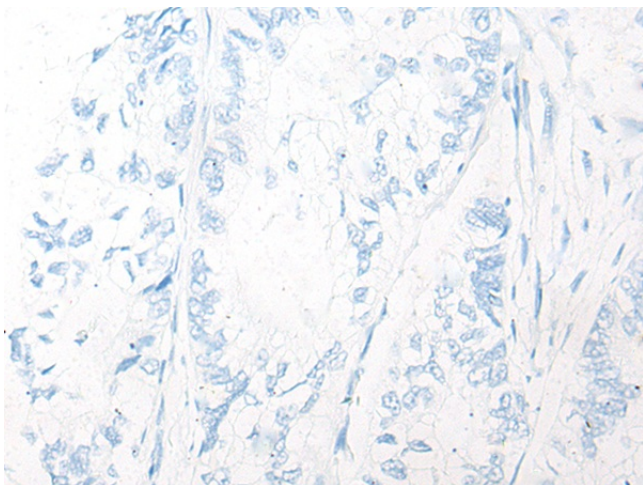
Product images:



Gel: 8%SDS-PAGE
Lysate: 40 μ g
Lane 1-4: Human kidney tissue
Mouse heart tissue
Human left kidney and Human heart tissue
lysates
Primary antibody: TA368159 (DAPP1 Antibody) at
dilution 1/200
Secondary antibody: Goat anti rabbit IgG at
1/8000 dilution
Exposure time: 1 minute



Immunohistochemistry of paraffin-embedded
Human gastric cancer tissue using TA368159
(DAPP1 Antibody) at dilution 1/20 (Original
magnification: \times 200)



Immunohistochemistry of paraffin-embedded Human gastric cancer tissue using TA368159 (DAPP1 Antibody) at dilution 1/20, treated with synthetic peptide. (Original magnification: ×200)