

Product datasheet for **TA368153**

Cytochrome C Oxidase subunit VIc (COX6C) Rabbit Polyclonal Antibody

Product data:

Product Type:	Primary Antibodies
Applications:	IHC, WB
Recommended Dilution:	WB: 500-2000 WB positive control: HEPG2□HUVEC and NIH/3T3 cell□Human heart tissue□Mouse heart tissue□PC-3 cell lysates IHC: 25-100 Positive control: Human liver cancer Predicted cell location: Cytoplasm
Reactivity:	Human, Mouse
Host:	Rabbit
Isotype:	IgG
Clonality:	Polyclonal
Immunogen:	Synthetic peptide of human COX6C
Formulation:	pH7.4 PBS, 0.05% NaN ₃ , 40% Glycerol
Concentration:	lot specific
Purification:	Antigen affinity purification
Conjugation:	Unconjugated
Storage:	Store at -20°C.
Stability:	1 year
Predicted Protein Size:	9 kDa
Gene Name:	cytochrome c oxidase subunit 6C
Database Link:	Entrez Gene 1345 Human P09669



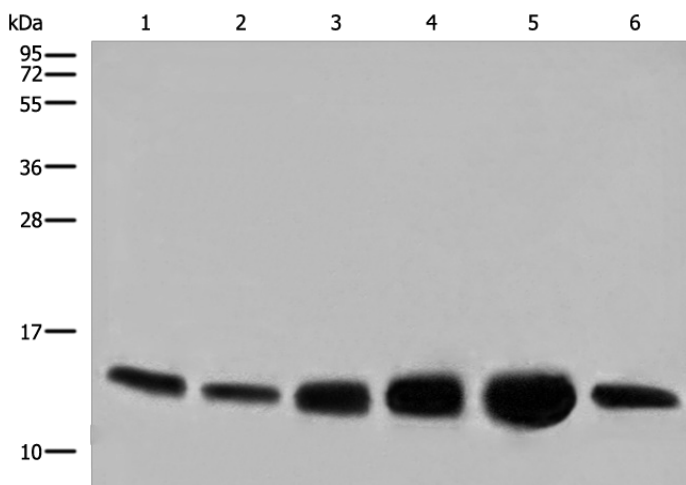
[View online »](#)

Background:

Cytochrome c oxidase, the terminal enzyme of the mitochondrial respiratory chain, catalyzes the electron transfer from reduced cytochrome c to oxygen. It is a heteromeric complex consisting of 3 catalytic subunits encoded by mitochondrial genes and multiple structural subunits encoded by nuclear genes. The mitochondrially-encoded subunits function in electron transfer, and the nuclear-encoded subunits may be involved in the regulation and assembly of the complex. This nuclear gene encodes subunit VIc, which has 77% amino acid sequence identity with mouse subunit VIc. This gene is up-regulated in prostate cancer cells. A pseudogene has been found on chromosomes 16p12.

Synonyms:

COX6C

Product images:

Gel: 12%SDS-PAGE

Lysate: 40 µg

Lane 1-6: HEPG2

HUVEC and NIH/3T3 cell

Human heart tissue

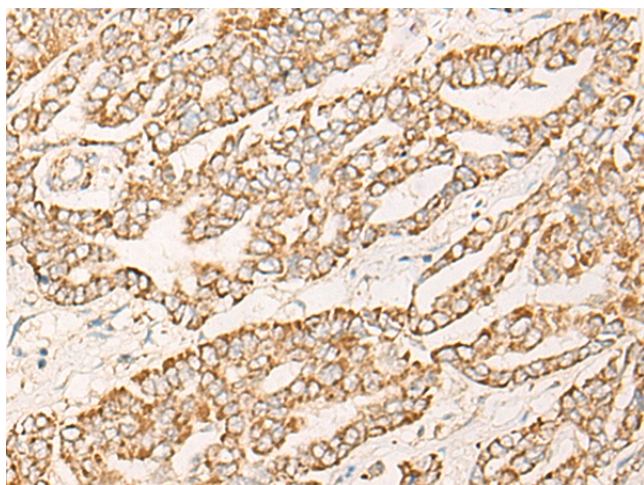
Mouse heart tissue

PC-3 cell lysates

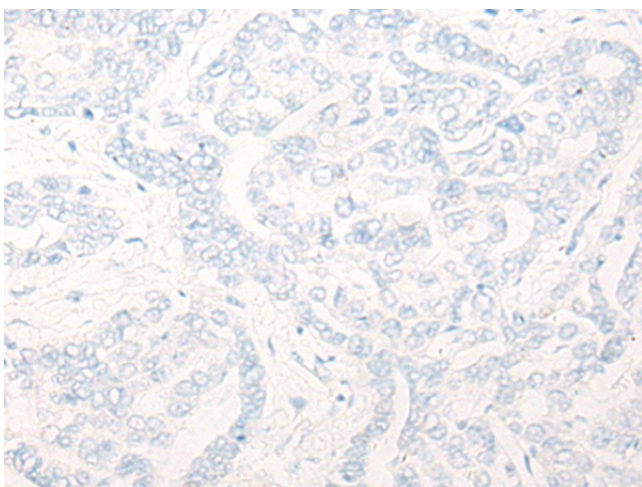
Primary antibody: TA368153 (COX6C Antibody) at dilution 1/800

Secondary antibody: Goat anti rabbit IgG at 1/8000 dilution

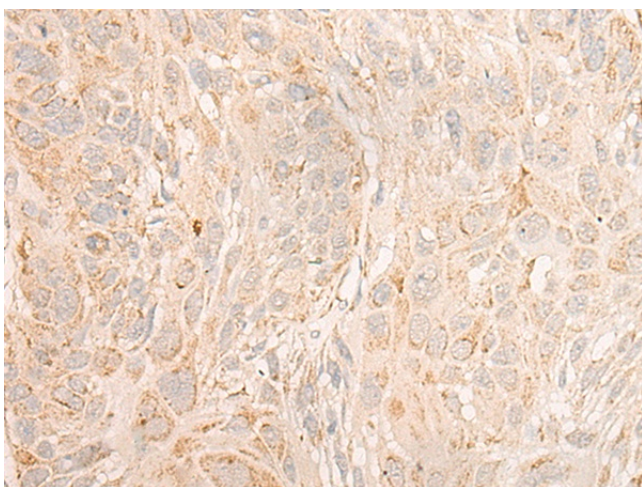
Exposure time: 1 second



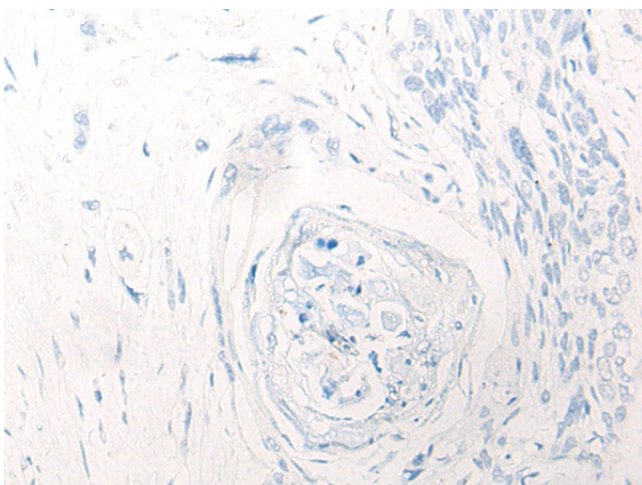
Immunohistochemistry of paraffin-embedded Human liver cancer tissue using TA368153 (COX6C Antibody) at dilution 1/25 (Original magnification: ×200)



Immunohistochemistry of paraffin-embedded Human liver cancer tissue using TA368153 (COX6C Antibody) at dilution 1/25, treated with synthetic peptide. (Original magnification: $\times 200$)



Immunohistochemistry of paraffin-embedded Human esophagus cancer tissue using TA368153 (COX6C Antibody) at dilution 1/25 (Original magnification: $\times 200$)



Immunohistochemistry of paraffin-embedded Human esophagus cancer tissue using TA368153 (COX6C Antibody) at dilution 1/25, treated with synthetic peptide. (Original magnification: $\times 200$)