

## Product datasheet for **TA368143**

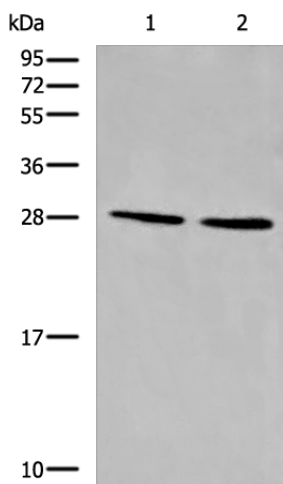
### **CYB5D1 Rabbit Polyclonal Antibody**

#### **Product data:**

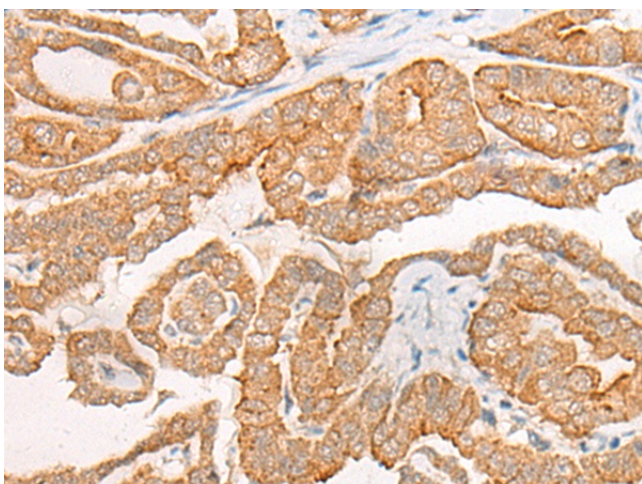
Product Type:	Primary Antibodies
Applications:	IHC, WB
Recommended Dilution:	WB: 500-2000 WB positive control: LOVO and 231 cell lysates IHC: 40-200 Positive control: Human thyroid cancer Predicted cell location: Cytoplasm
Reactivity:	Human, Mouse
Host:	Rabbit
Isotype:	IgG
Clonality:	Polyclonal
Immunogen:	Synthetic peptide of human CYB5D1
Formulation:	pH7.4 PBS, 0.05% NaN <sub>3</sub> , 40% Glycerol
Concentration:	lot specific
Purification:	Antigen affinity purification
Conjugation:	Unconjugated
Storage:	Store at -20°C.
Stability:	1 year
Predicted Protein Size:	27 kDa
Gene Name:	cytochrome b5 domain containing 1
Database Link:	<a href="#">Entrez Gene 124637 Human Q6P9G0</a>
Background:	CYB5D1 belongs to the cytochrome b5 family and contains 1 cytochrome b5 heme-binding domain. Cytochromes b5 are ubiquitous electron transport proteins found in animals, plants and yeasts. There are 2 named isoforms produced by alternative splicing.
Synonyms:	FLJ32499



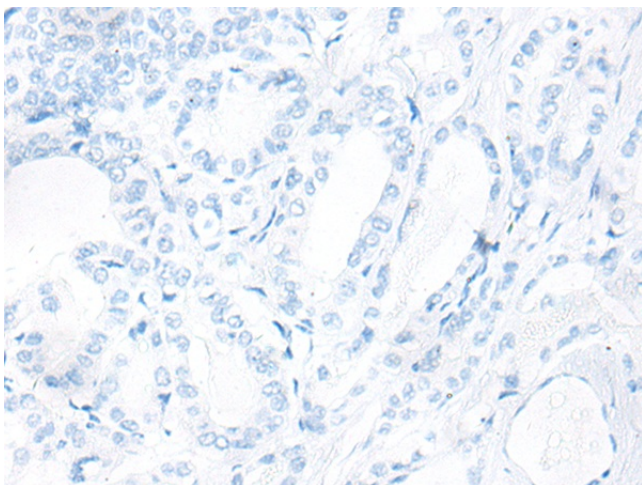
[View online »](#)

**Product images:**


Gel: 12%SDS-PAGE  
 Lysate: 40 µg  
 Lane 1-2: LOVO and 231 cell lysates  
 Primary antibody: TA368143 (CYB5D1 Antibody)  
 at dilution 1/650  
 Secondary antibody: Goat anti rabbit IgG at  
 1/8000 dilution  
 Exposure time: 30 seconds



Immunohistochemistry of paraffin-embedded  
 Human thyroid cancer tissue using TA368143  
 (CYB5D1 Antibody) at dilution 1/45 (Original  
 magnification: ×200)



Immunohistochemistry of paraffin-embedded Human thyroid cancer tissue using TA368143 (CYB5D1 Antibody) at dilution 1/45, treated with synthetic peptide. (Original magnification: ×200)