

Product datasheet for **TA368135S**

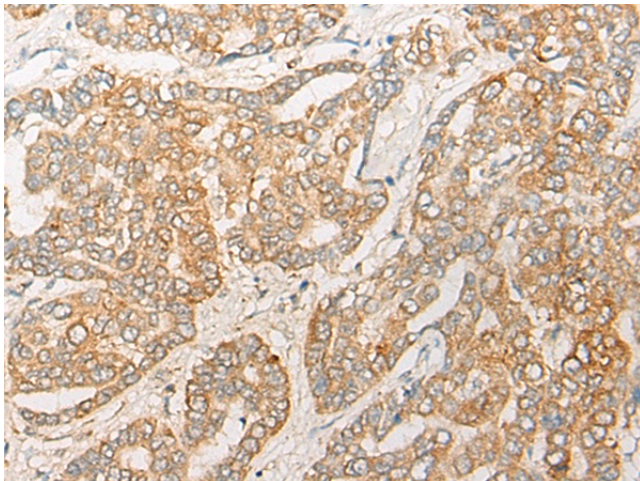
COUP TF1 (NR2F1) Rabbit Polyclonal Antibody

Product data:

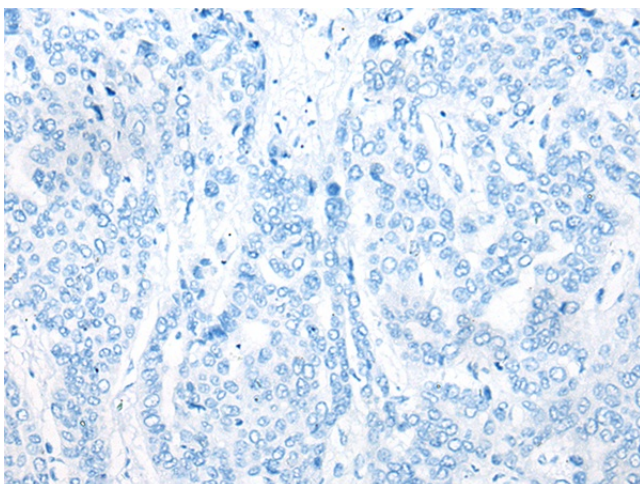
Product Type:	Primary Antibodies
Applications:	IHC
Recommended Dilution:	IHC: 20-100 Positive control: Human liver cancer Predicted cell location: Cytoplasm or Nucleus
Reactivity:	Human, Mouse
Host:	Rabbit
Isotype:	IgG
Clonality:	Polyclonal
Immunogen:	Synthetic peptide of human NR2F1
Formulation:	pH7.4 PBS, 0.05% NaN ₃ , 40% Glycerol
Purification:	Antigen affinity purification
Conjugation:	Unconjugated
Storage:	Store at -20°C.
Stability:	1 year
Gene Name:	nuclear receptor subfamily 2 group F member 1
Database Link:	Entrez Gene 7025 Human P10589
Background:	The protein encoded by this gene is a nuclear hormone receptor and transcriptional regulator. The encoded protein acts as a homodimer and binds to 5'-AGGTCA-3' repeats. Defects in this gene are a cause of Bosch-Boonstra optic atrophy syndrome (BBOAS).
Synonyms:	COUP-TF1; COUP-TFI; EAR-3; EAR3; ERBAL3; NR2F2; SVP44; TCFCOUP1; TFCOUP1



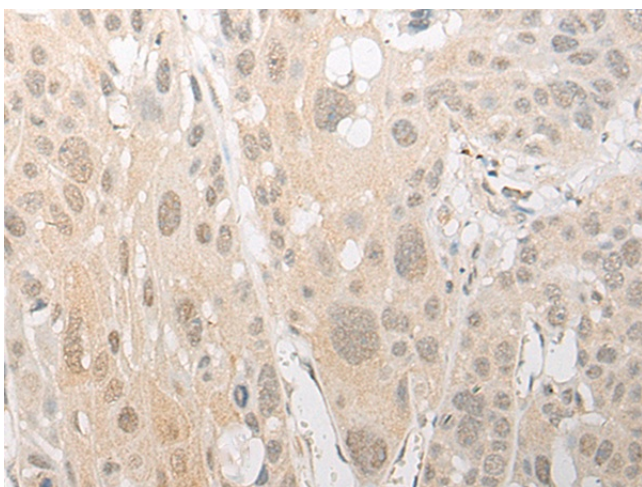
[View online »](#)

Product images:

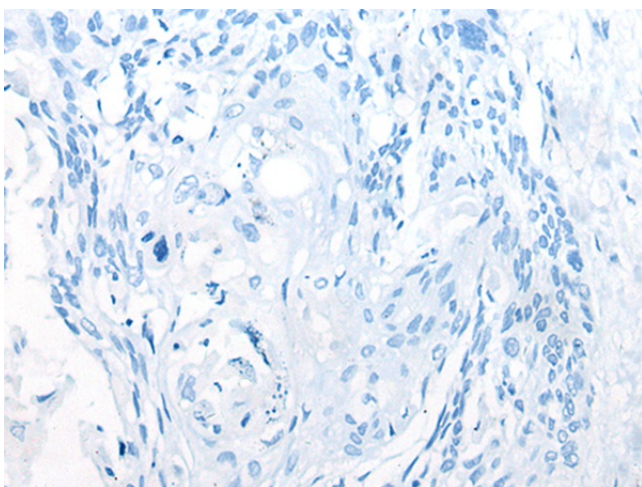
Immunohistochemistry of paraffin-embedded Human liver cancer tissue using [TA368135] (NR2F1 Antibody) at dilution 1/20 (Original magnification: x200)



Immunohistochemistry of paraffin-embedded Human liver cancer tissue using [TA368135] (NR2F1 Antibody) at dilution 1/20, treated with synthetic peptide. (Original magnification: x200)



Immunohistochemistry of paraffin-embedded Human esophagus cancer tissue using [TA368135] (NR2F1 Antibody) at dilution 1/20 (Original magnification: $\times 200$)



Immunohistochemistry of paraffin-embedded Human esophagus cancer tissue using [TA368135] (NR2F1 Antibody) at dilution 1/20, treated with synthetic peptide. (Original magnification: $\times 200$)