

## Product datasheet for **TA368134S**

### MSH2 Rabbit Polyclonal Antibody

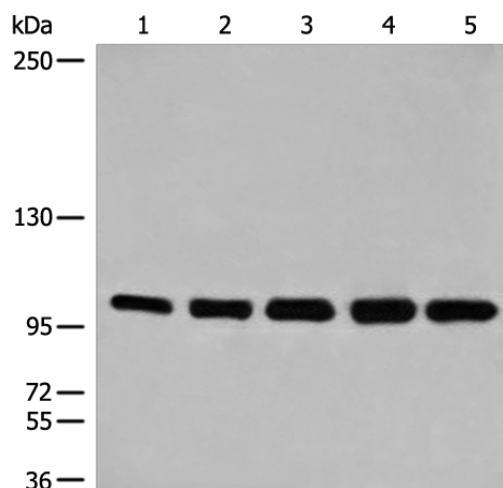
#### Product data:

Product Type:	Primary Antibodies
Applications:	IHC, WB
Recommended Dilution:	WB: 200-1000 WB positive control: A172□Hela□SKOV3□293T and HEPG2 cell lysates IHC: 25-100 Positive control: Human lung cancer Predicted cell location: Nucleus
Reactivity:	Human, Mouse
Host:	Rabbit
Isotype:	IgG
Clonality:	Polyclonal
Immunogen:	Synthetic peptide of human MSH2
Formulation:	pH7.4 PBS, 0.05% NaN <sub>3</sub> , 40% Glycerol
Purification:	Antigen affinity purification
Conjugation:	Unconjugated
Storage:	Store at -20°C.
Stability:	1 year
Predicted Protein Size:	105 kDa
Gene Name:	mutS homolog 2
Database Link:	<a href="#">Entrez Gene 4436 Human P43246</a>
Background:	This locus is frequently mutated in hereditary nonpolyposis colon cancer (HNPCC). When cloned, it was discovered to be a human homolog of the E. coli mismatch repair gene mutS, consistent with the characteristic alterations in microsatellite sequences (RER+ phenotype) found in HNPCC. Two transcript variants encoding different isoforms have been found for this gene.
Synonyms:	COCA1; FCC1; HNPCC; HNPCC1; LCFS2



[View online »](#)

## Product images:



Gel: 6%SDS-PAGE

Lysate: 40  $\mu$ g

Lane 1-5: A172

Hela

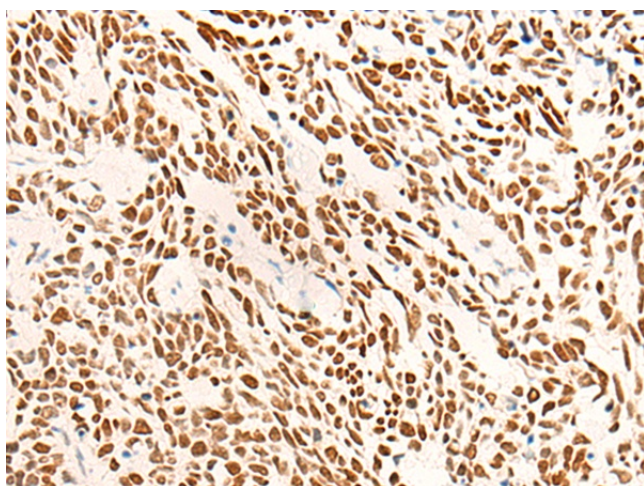
SKOV3

293T and HEPG2 cell lysates

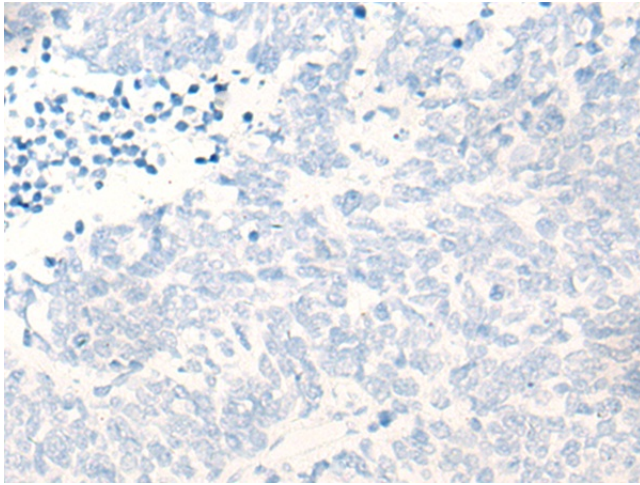
Primary antibody: [TA368134] (MSH2 Antibody) at dilution 1/200

Secondary antibody: Goat anti rabbit IgG at 1/8000 dilution

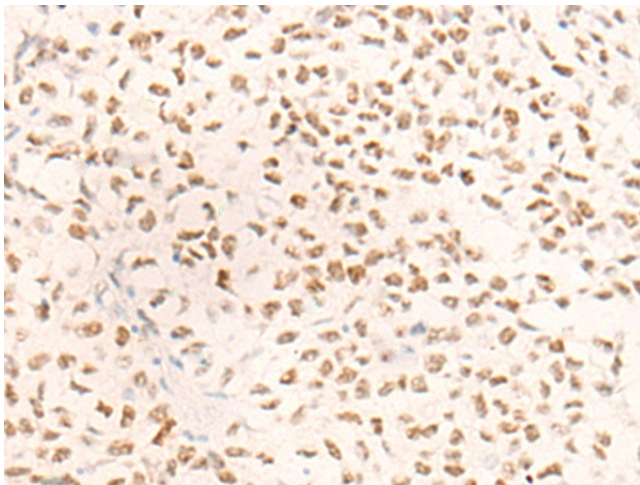
Exposure time: 1 minute



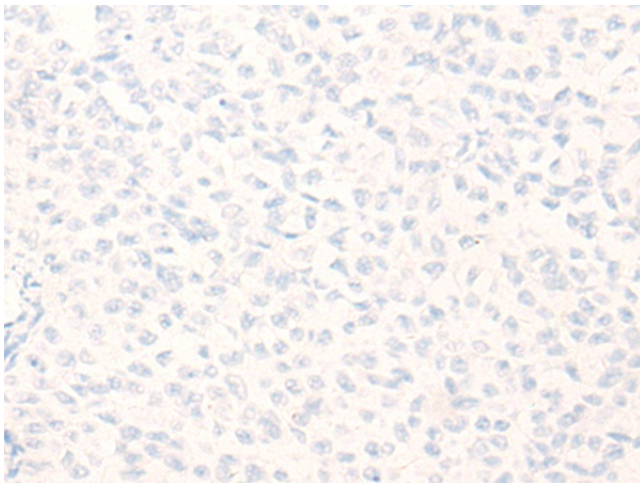
Immunohistochemistry of paraffin-embedded Human lung cancer tissue using [TA368134] (MSH2 Antibody) at dilution 1/20 (Original magnification:  $\times$ 200)



Immunohistochemistry of paraffin-embedded Human lung cancer tissue using [TA368134] (MSH2 Antibody) at dilution 1/20, treated with synthetic peptide. (Original magnification: ×200)



Immunohistochemistry of paraffin-embedded Human ovarian cancer tissue using [TA368134] (MSH2 Antibody) at dilution 1/20 (Original magnification: ×200)



Immunohistochemistry of paraffin-embedded Human ovarian cancer tissue using [TA368134] (MSH2 Antibody) at dilution 1/20, treated with synthetic peptide. (Original magnification: ×200)