

## Product datasheet for **TA368128**

### GHRH Rabbit Polyclonal Antibody

#### Product data:

Product Type:	Primary Antibodies
Applications:	IHC
Recommended Dilution:	IHC: 20-100 Positive control: Human gastric cancer Predicted cell location: Secreted
Reactivity:	Human
Host:	Rabbit
Isotype:	IgG
Clonality:	Polyclonal
Immunogen:	Synthetic peptide of human GHRH
Formulation:	pH7.4 PBS, 0.05% NaN <sub>3</sub> , 40% Glycerol
Concentration:	lot specific
Purification:	Antigen affinity purification
Conjugation:	Unconjugated
Storage:	Store at -20°C.
Stability:	1 year
Gene Name:	growth hormone releasing hormone
Database Link:	<a href="#">Entrez Gene 2691 Human P01286</a>

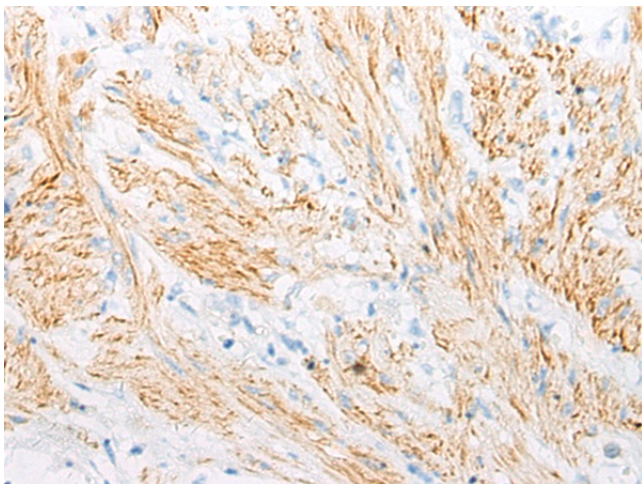
**Background:** This gene encodes a member of the glucagon family of proteins. The encoded preproprotein is produced in the hypothalamus and cleaved to generate the mature factor, known as somatoliberin, which acts to stimulate growth hormone release from the pituitary gland. Variant receptors for somatoliberin have been found in several types of tumors, and antagonists of these receptors can inhibit the growth of the tumors. Defects in this gene are a cause of dwarfism, while hypersecretion of the encoded protein is a cause of gigantism. Alternative splicing results in multiple transcript variants, at least one of which encodes a preproprotein that is proteolytically processed.



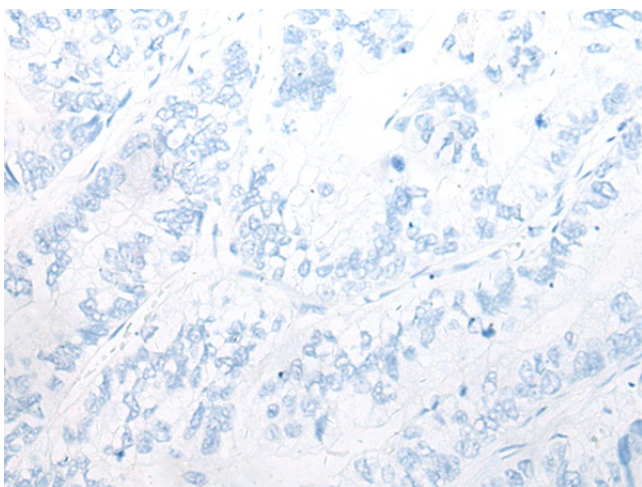
[View online »](#)

**Synonyms:** GHRF; GRF; MGC119781; OTTHUMP00000030915; sermorelin; somatocrinin; somatoliberin; Somatorelin

**Product images:**



Immunohistochemistry of paraffin-embedded Human gastric cancer tissue using TA368128 (GHRH Antibody) at dilution 1/20 (Original magnification: x200)



Immunohistochemistry of paraffin-embedded Human gastric cancer tissue using TA368128 (GHRH Antibody) at dilution 1/20, treated with synthetic peptide. (Original magnification: x200)