

## Product datasheet for **TA368122S**

### Cyclin J (CCNJ) Rabbit Polyclonal Antibody

#### Product data:

Product Type:	Primary Antibodies
Applications:	IHC, WB
Recommended Dilution:	WB: 200-1000 WB positive control: K562 cell lysate IHC: 10-50 Positive control: Human gastric cancer Predicted cell location: Cytoplasm
Reactivity:	Human, Mouse
Host:	Rabbit
Isotype:	IgG
Clonality:	Polyclonal
Immunogen:	Synthetic peptide of human CCNJ
Formulation:	pH7.4 PBS, 0.05% NaN <sub>3</sub> , 40% Glycerol
Purification:	Antigen affinity purification
Conjugation:	Unconjugated
Storage:	Store at -20°C.
Stability:	1 year
Predicted Protein Size:	43 kDa
Gene Name:	cyclin J
Database Link:	<a href="#">Entrez Gene 54619 Human Q5T5M9</a>

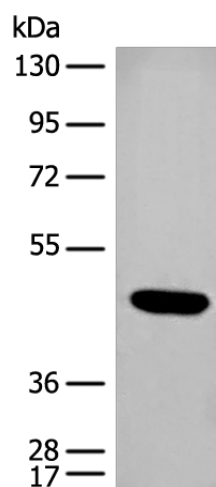
[View online »](#)

**Background:**

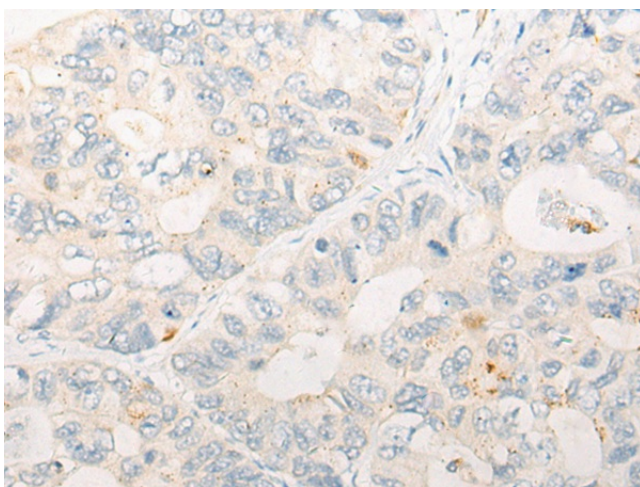
Cyclin J is a 372 amino acid protein encoded by the human gene CCNJ located on chromosome 10. Cyclin J belongs to the cyclin family and contains one cyclin N-terminal domain. A cyclin forms a complex with its partner cyclin-dependent kinase (Cdk), which activates the protein kinase function of the Cdk. Cyclins are so named because their concentration varies in a cyclical fashion during the cell cycle. They are produced or degraded as needed in order to drive the cell through the different stages of the cell cycle. When its concentrations in the cell are low, the cyclin detaches from the Cdk, inhibiting the activity of the enzyme, probably by causing a protein chain to block the enzymatic site. Cyclin J-associated kinase activity is required for the early embryonic division cycles.

**Synonyms:**

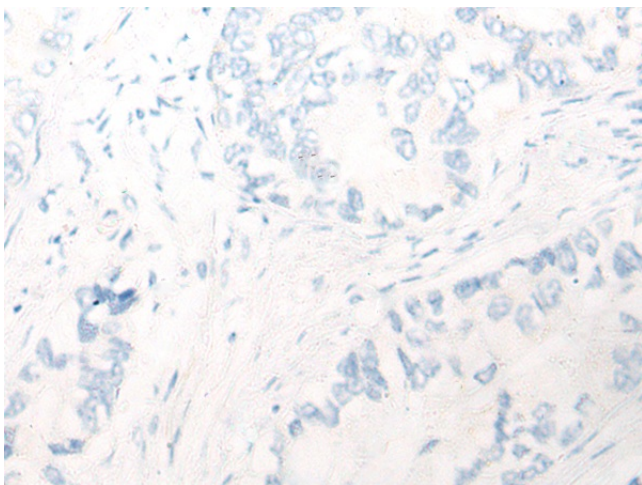
bA690P14.1; FLJ10895

**Product images:**


Gel: 8%SDS-PAGE  
Lysate: 40 µg  
Lane: K562 cell lysate  
Primary antibody: [TA368122] (CCNJ Antibody) at dilution 1/250  
Secondary antibody: Goat anti rabbit IgG at 1/8000 dilution  
Exposure time: 1 minute



Immunohistochemistry of paraffin-embedded Human gastric cancer tissue using [TA368122] (CCNJ Antibody) at dilution 1/20 (Original magnification: ×200)



Immunohistochemistry of paraffin-embedded Human gastric cancer tissue using [TA368122] (CCNJ Antibody) at dilution 1/20, treated with synthetic peptide. (Original magnification: ×200)