

Product datasheet for **TA368114**

ARF3 Rabbit Polyclonal Antibody

Product data:

Product Type:	Primary Antibodies
Applications:	IHC, WB
Recommended Dilution:	WB: 200-1000 WB positive control: Mouse brain tissue□Human fetal brain tissue□231□Raji□HepG2 and Hela cell lysates IHC: 25-100 Positive control: Human liver cancer Predicted cell location: Cytoplasm
Reactivity:	Human, Mouse, Rat
Host:	Rabbit
Isotype:	IgG
Clonality:	Polyclonal
Immunogen:	Synthetic peptide of human ARF3
Formulation:	pH7.4 PBS, 0.05% NaN ₃ , 40% Glycerol
Concentration:	lot specific
Purification:	Antigen affinity purification
Conjugation:	Unconjugated
Storage:	Store at -20°C.
Stability:	1 year
Predicted Protein Size:	21 kDa
Gene Name:	ADP ribosylation factor 3
Database Link:	Entrez Gene 377 Human P61204



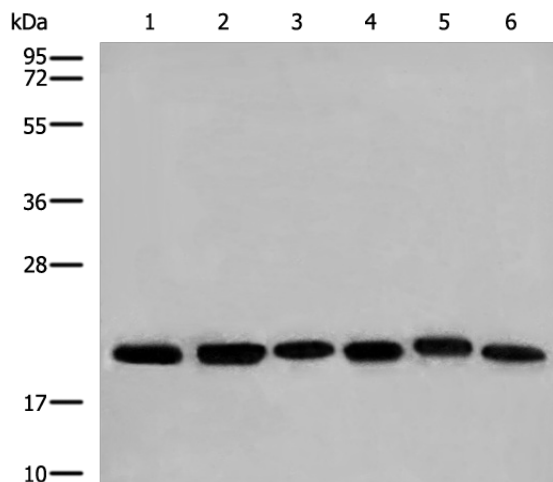
[View online »](#)

Background:

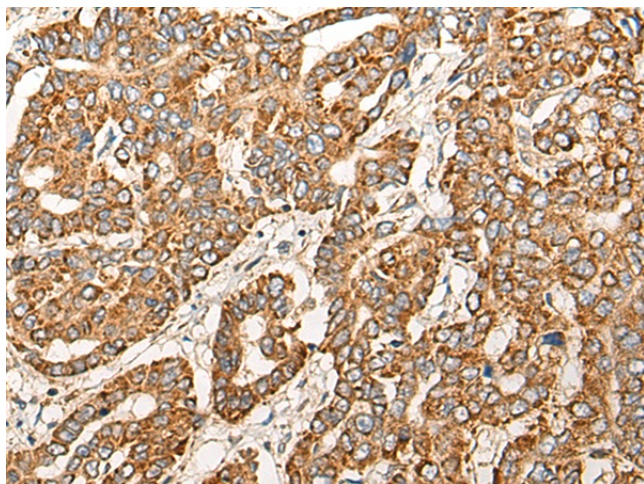
ADP-ribosylation factor 3 (ARF3) is a member of the human ARF gene family. These genes encode small guanine nucleotide-binding proteins that stimulate the ADP-ribosyltransferase activity of cholera toxin and play a role in vesicular trafficking and as activators of phospholipase D. The gene products include 6 ARF proteins and 11 ARF-like proteins and constitute 1 family of the RAS superfamily. The ARF proteins are categorized as class I (ARF1, ARF2, and ARF3), class II (ARF4 and ARF5) and class III (ARF6) and members of each class share a common gene organization. The ARF3 gene contains five exons and four introns.

Synonyms:

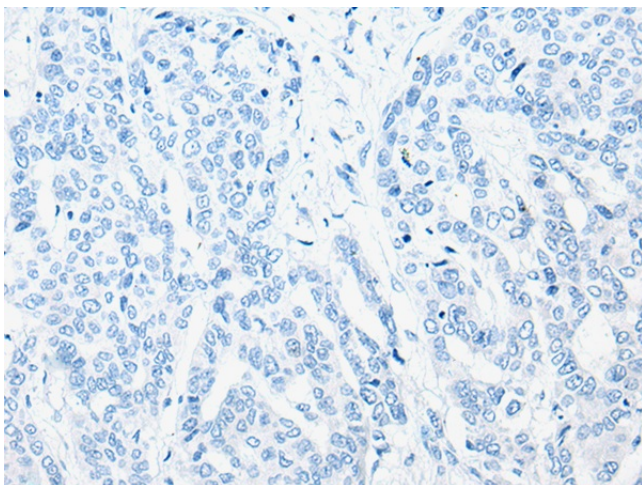
ARF3

Product images:

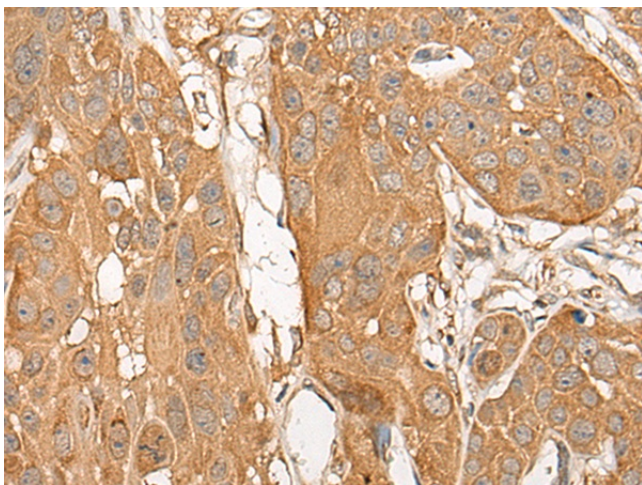
Gel: 12%SDS-PAGE
Lysate: 40 μ g
Lane 1-6: Mouse brain tissue
Human fetal brain tissue
231
Raji
HepG2 and Hela cell lysates
Primary antibody: TA368114 (ARF3 Antibody) at dilution 1/350
Secondary antibody: Goat anti rabbit IgG at 1/8000 dilution
Exposure time: 1 second



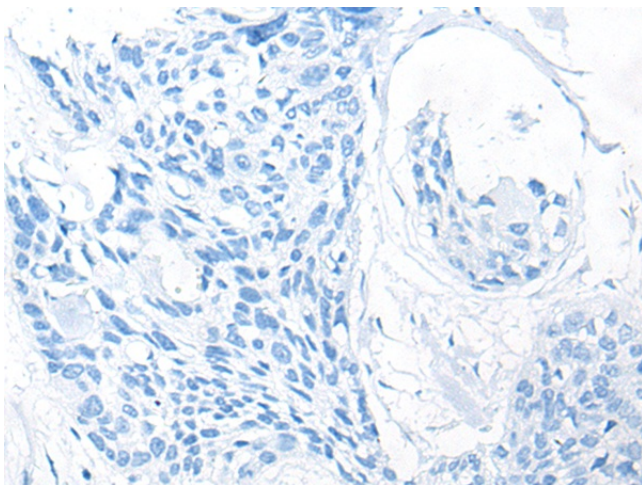
Immunohistochemistry of paraffin-embedded Human liver cancer tissue using TA368114 (ARF3 Antibody) at dilution 1/20 (Original magnification: \times 200)



Immunohistochemistry of paraffin-embedded Human liver cancer tissue using TA368114 (ARF3 Antibody) at dilution 1/20, treated with synthetic peptide. (Original magnification: x200)



Immunohistochemistry of paraffin-embedded Human esophagus cancer tissue using TA368114 (ARF3 Antibody) at dilution 1/20 (Original magnification: x200)



Immunohistochemistry of paraffin-embedded Human esophagus cancer tissue using TA368114 (ARF3 Antibody) at dilution 1/20, treated with synthetic peptide. (Original magnification: x200)