

Product datasheet for **TA368111S**

Solute carrier family 22 member 18 (SLC22A18) Rabbit Polyclonal Antibody

Product data:

| | |
|-----------------------|---|
| Product Type: | Primary Antibodies |
| Applications: | IHC |
| Recommended Dilution: | IHC: 20-100 Positive control: Human thyroid cancer Predicted cell location: Cell membrane |
| Reactivity: | Human |
| Host: | Rabbit |
| Isotype: | IgG |
| Clonality: | Polyclonal |
| Immunogen: | Synthetic peptide of human SLC22A18 |
| Formulation: | pH7.4 PBS, 0.05% NaN ₃ , 40% Glycerol |
| Purification: | Antigen affinity purification |
| Conjugation: | Unconjugated |
| Storage: | Store at -20°C. |
| Stability: | 1 year |
| Gene Name: | solute carrier family 22 member 18 |
| Database Link: | Entrez Gene 5002 Human Q96BI1 |

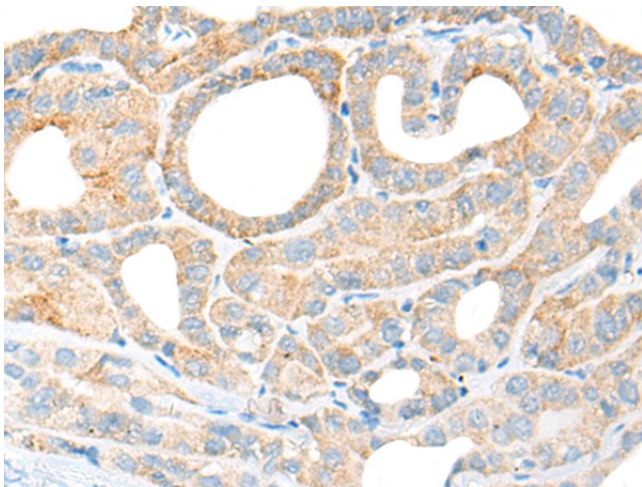
Background: This gene is one of several tumor-suppressing subtransferable fragments located in the imprinted gene domain of 11p15.5, an important tumor-suppressor gene region. Alterations in this region have been associated with the Beckwith-Wiedemann syndrome, Wilms tumor, rhabdomyosarcoma, adrenocortical carcinoma, and lung, ovarian, and breast cancer. This gene is imprinted, with preferential expression from the maternal allele. Mutations in this gene have been found in Wilms' tumor and lung cancer. This protein may act as a transporter of organic cations, and have a role in the transport of chloroquine and quinidine-related compounds in kidney. Several alternatively spliced transcript variants encoding different isoforms have been described.



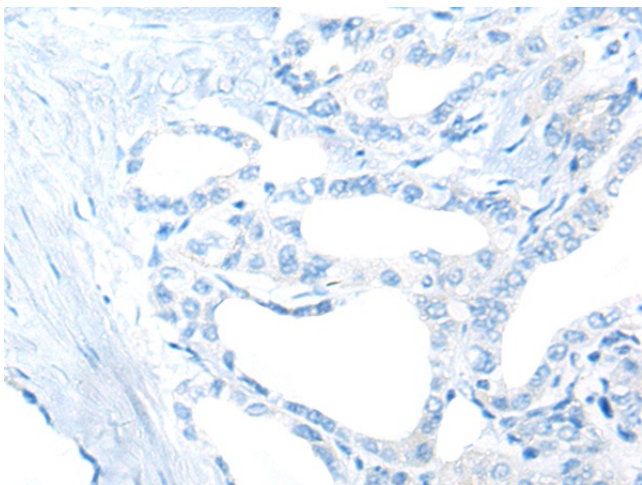
[View online »](#)

Synonyms: BWR1A; BWSCR1A; DKFZp667A184; HET; IMPT1; ITM; ORCTL-2; ORCTL2; OTTHUMP00000011733; p45-BWR1A; SLC22A1L; TSSC5

Product images:



Immunohistochemistry of paraffin-embedded Human thyroid cancer tissue using [TA368111] (SLC22A18 Antibody) at dilution 1/30 (Original magnification: $\times 200$)



Immunohistochemistry of paraffin-embedded Human thyroid cancer tissue using [TA368111] (SLC22A18 Antibody) at dilution 1/30, treated with synthetic peptide. (Original magnification: $\times 200$)