

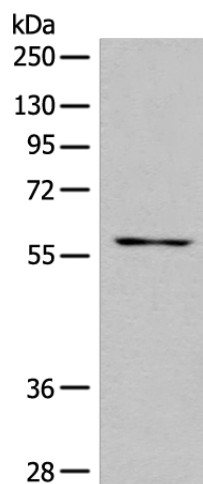
## Product datasheet for **TA368109S**

### SLC5A8 Rabbit Polyclonal Antibody

#### Product data:

Product Type:	Primary Antibodies
Applications:	WB
Recommended Dilution:	WB: 200-1000 WB positive control: Human cerebrum tissue lysate
Reactivity:	Human
Host:	Rabbit
Isotype:	IgG
Clonality:	Polyclonal
Immunogen:	Synthetic peptide of human SLC5A8
Formulation:	pH7.4 PBS, 0.05% NaN <sub>3</sub> , 40% Glycerol
Purification:	Antigen affinity purification
Conjugation:	Unconjugated
Storage:	Store at -20°C.
Stability:	1 year
Predicted Protein Size:	67 kDa
Gene Name:	solute carrier family 5 member 8
Database Link:	<a href="#">Entrez Gene 160728 Human Q8N695</a>
Background:	SLC5A8 has been shown to transport iodide by a passive mechanism and monocarboxylates and short-chain fatty acids by a sodium-coupled mechanism .In kidney, SLC5A8 functions as a high-affinity sodium-coupled lactate transporter involved in reabsorption of lactate and maintenance of blood lactate levels.
Synonyms:	AIT; MGC125354; SMCT; SMCT1

[View online »](#)

**Product images:**

Gel: 8%SDS-PAGE  
Lysate: 40 µg  
Lane: Human cerebrum tissue lysate  
Primary antibody: [TA368109] (SLC5A8 Antibody)  
at dilution 1/400  
Secondary antibody: Goat anti rabbit IgG at  
1/8000 dilution  
Exposure time: 1 minute