

Product datasheet for **TA368109**

SLC5A8 Rabbit Polyclonal Antibody

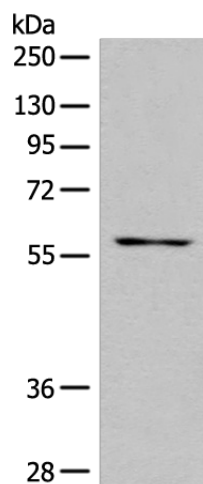
Product data:

| | |
|-------------------------|---|
| Product Type: | Primary Antibodies |
| Applications: | WB |
| Recommended Dilution: | WB: 200-1000 WB positive control: Human cerebrum tissue lysate |
| Reactivity: | Human |
| Host: | Rabbit |
| Isotype: | IgG |
| Clonality: | Polyclonal |
| Immunogen: | Synthetic peptide of human SLC5A8 |
| Formulation: | pH7.4 PBS, 0.05% NaN ₃ , 40% Glycerol |
| Concentration: | lot specific |
| Purification: | Antigen affinity purification |
| Conjugation: | Unconjugated |
| Storage: | Store at -20°C. |
| Stability: | 1 year |
| Predicted Protein Size: | 67 kDa |
| Gene Name: | solute carrier family 5 member 8 |
| Database Link: | Entrez Gene 160728 Human Q8N695 |
| Background: | SLC5A8 has been shown to transport iodide by a passive mechanism and monocarboxylates and short-chain fatty acids by a sodium-coupled mechanism .In kidney, SLC5A8 functions as a high-affinity sodium-coupled lactate transporter involved in reabsorption of lactate and maintenance of blood lactate levels. |
| Synonyms: | AIT; MGC125354; SMCT; SMCT1 |



[View online »](#)

Product images:



Gel: 8%SDS-PAGE

Lysate: 40 µg

Lane: Human cerebrum tissue lysate

Primary antibody: TA368109 (SLC5A8 Antibody) at dilution 1/400

Secondary antibody: Goat anti rabbit IgG at 1/8000 dilution

Exposure time: 1 minute