

## Product datasheet for **TA368107S**

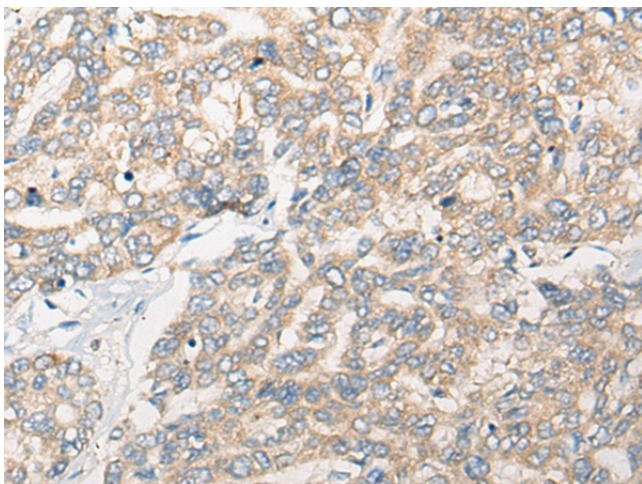
### REM (REM1) Rabbit Polyclonal Antibody

#### Product data:

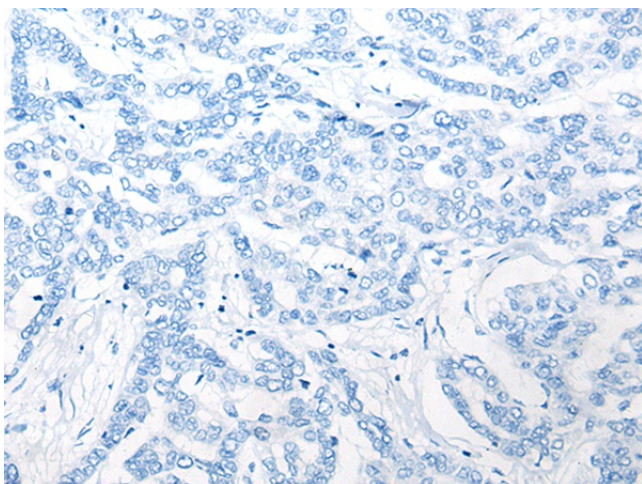
Product Type:	Primary Antibodies
Applications:	IHC
Recommended Dilution:	IHC: 20-100 Positive control: Human liver cancer Predicted cell location: Cytoplasm
Reactivity:	Human
Host:	Rabbit
Isotype:	IgG
Clonality:	Polyclonal
Immunogen:	Synthetic peptide of human REM1
Formulation:	pH7.4 PBS, 0.05% NaN <sub>3</sub> , 40% Glycerol
Purification:	Antigen affinity purification
Conjugation:	Unconjugated
Storage:	Store at -20°C.
Stability:	1 year
Gene Name:	RRAD and GEM like GTPase 1
Database Link:	<a href="#">Entrez Gene 28954 Human O75628</a>
Background:	The protein encoded by this gene is a GTPase and member of the RAS-like GTP-binding protein family. The encoded protein is expressed in endothelial cells, where it promotes reorganization of the actin cytoskeleton and morphological changes in the cells.
Synonyms:	GD:REM; GES; MGC48669; REM



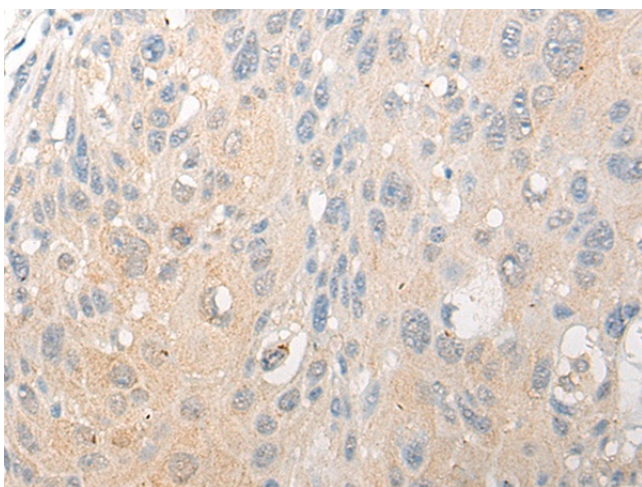
[View online »](#)

**Product images:**


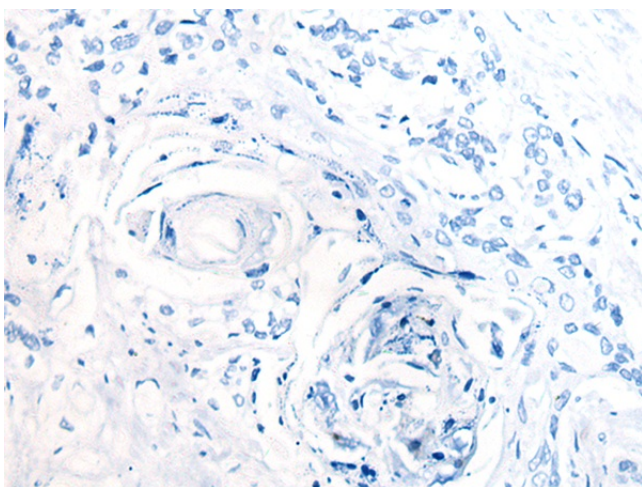
Immunohistochemistry of paraffin-embedded Human liver cancer tissue using [TA368107] (REM1 Antibody) at dilution 1/25 (Original magnification:  $\times 200$ )



Immunohistochemistry of paraffin-embedded Human liver cancer tissue using [TA368107] (REM1 Antibody) at dilution 1/25, treated with synthetic peptide. (Original magnification:  $\times 200$ )



Immunohistochemistry of paraffin-embedded Human esophagus cancer tissue using [TA368107] (REM1 Antibody) at dilution 1/25 (Original magnification:  $\times 200$ )



Immunohistochemistry of paraffin-embedded Human esophagus cancer tissue using [TA368107] (REM1 Antibody) at dilution 1/25, treated with synthetic peptide. (Original magnification:  $\times 200$ )