

## Product datasheet for **TA368100**

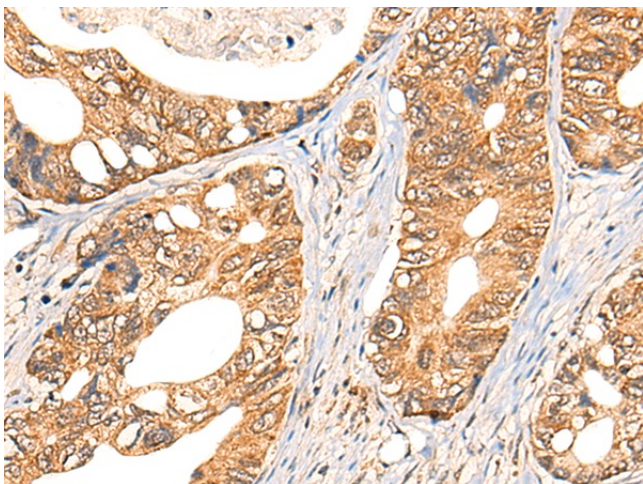
### **NOL8 Rabbit Polyclonal Antibody**

#### **Product data:**

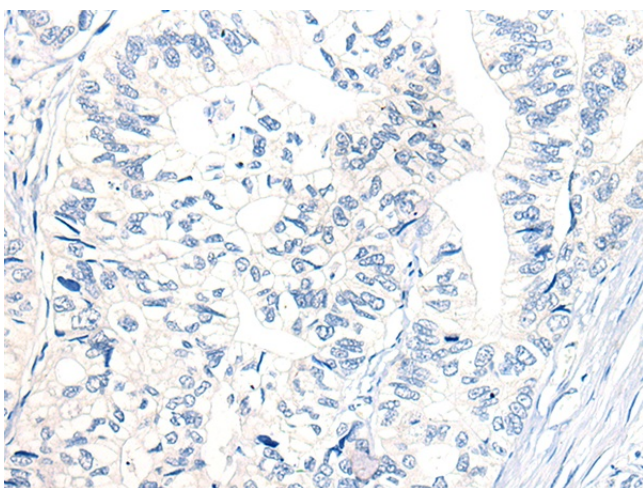
|                       |  |
|-----------------------|--|
| Product Type:         | Primary Antibodies   |
| Applications:         | IHC  |
| Recommended Dilution: | IHC: 30-150<br>Positive control: Human gastric cancer<br>Predicted cell location: Cytoplasm  |
| Reactivity:           | Human  |
| Host:                 | Rabbit   |
| Isotype:              | IgG  |
| Clonality:            | Polyclonal   |
| Immunogen:            | Synthetic peptide of human NOL8  |
| Formulation:          | pH7.4 PBS, 0.05% NaN <sub>3</sub> , 40% Glycerol   |
| Concentration:        | lot specific   |
| Purification:         | Antigen affinity purification  |
| Conjugation:          | Unconjugated   |
| Storage:              | Store at -20°C.  |
| Stability:            | 1 year   |
| Gene Name:            | nucleolar protein 8  |
| Database Link:        | <a href="#">Entrez Gene 55035 Human Q76FK4</a>   |
| Background:           | NOL8 binds Ras-related GTP-binding proteins (see MIM 608267) and plays a role in cell growth (Sekiguchi et al., 2004 [PubMed 14660641]). |
| Synonyms:             | bA62C3.3; bA62C3.4; C9orf34; DKFZp686P12242; FLJ20736; Nop132  |



[View online »](#)

**Product images:**

Immunohistochemistry of paraffin-embedded Human gastric cancer tissue using TA368100 (NOL8 Antibody) at dilution 1/40 (Original magnification:  $\times 200$ )



Immunohistochemistry of paraffin-embedded Human gastric cancer tissue using TA368100 (NOL8 Antibody) at dilution 1/40, treated with synthetic peptide. (Original magnification:  $\times 200$ )