

## Product datasheet for **TA368095**

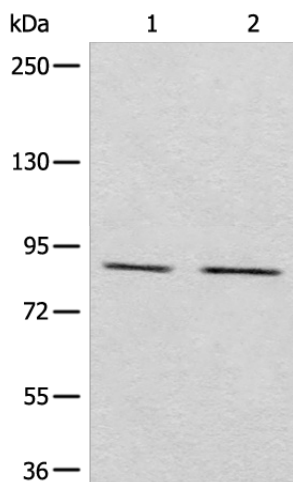
### MARK2 Rabbit Polyclonal Antibody

#### Product data:

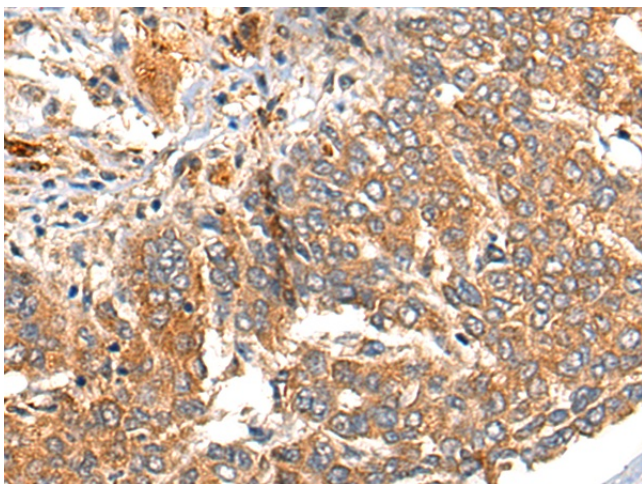
Product Type:	Primary Antibodies
Applications:	IHC, WB
Recommended Dilution:	WB: 500-2000 WB positive control: Raji and A431 cell lysates IHC: 25-100 Positive control: Human liver cancer Predicted cell location: Cytoplasm and Cell membrane
Reactivity:	Human, Mouse, Rat
Host:	Rabbit
Isotype:	IgG
Clonality:	Polyclonal
Immunogen:	Synthetic peptide of human MARK2
Formulation:	pH7.4 PBS, 0.05% NaN <sub>3</sub> , 40% Glycerol
Concentration:	lot specific
Purification:	Antigen affinity purification
Conjugation:	Unconjugated
Storage:	Store at -20°C.
Stability:	1 year
Predicted Protein Size:	88 kDa
Gene Name:	microtubule affinity regulating kinase 2
Database Link:	<a href="#">Entrez Gene 2011 Human Q7KZ17</a>
Background:	This gene encodes a member of the Par-1 family of serine/threonine protein kinases. The protein is an important regulator of cell polarity in epithelial and neuronal cells, and also controls the stability of microtubules through phosphorylation and inactivation of several microtubule-associating proteins. The protein localizes to cell membranes. Multiple transcript variants encoding different isoforms have been found for this gene.
Synonyms:	EMK1; MGC99619; PAR-1; Par1b



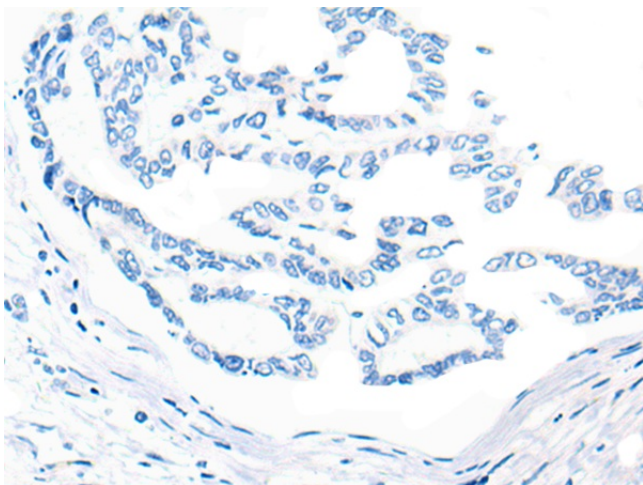
[View online »](#)

**Product images:**

Gel: 6%SDS-PAGE  
Lysate: 40 µg  
Lane 1-2: Raji and A431 cell lysates  
Primary antibody: TA368095 (MARK2 Antibody) at dilution 1/800  
Secondary antibody: Goat anti rabbit IgG at 1/8000 dilution  
Exposure time: 1 minute



Immunohistochemistry of paraffin-embedded Human liver cancer tissue using TA368095 (MARK2 Antibody) at dilution 1/35 (Original magnification: ×200)



Immunohistochemistry of paraffin-embedded Human liver cancer tissue using TA368095 (MARK2 Antibody) at dilution 1/35, treated with synthetic peptide. (Original magnification:  $\times 200$ )