

Product datasheet for **TA368084**

ATG2A Rabbit Polyclonal Antibody

Product data:

| | |
|-----------------------|---|
| Product Type: | Primary Antibodies |
| Applications: | IHC |
| Recommended Dilution: | IHC: 20-100 Positive control: Human gastric cancer Predicted cell location: Cytoplasm |
| Reactivity: | Human, Mouse |
| Host: | Rabbit |
| Isotype: | IgG |
| Clonality: | Polyclonal |
| Immunogen: | Synthetic peptide of human ATG2A |
| Formulation: | pH7.4 PBS, 0.05% NaN ₃ , 40% Glycerol |
| Concentration: | lot specific |
| Purification: | Antigen affinity purification |
| Conjugation: | Unconjugated |
| Storage: | Store at -20°C. |
| Stability: | 1 year |
| Gene Name: | autophagy related 2A |
| Database Link: | Entrez Gene 23130 Human Q2TAZ0 |



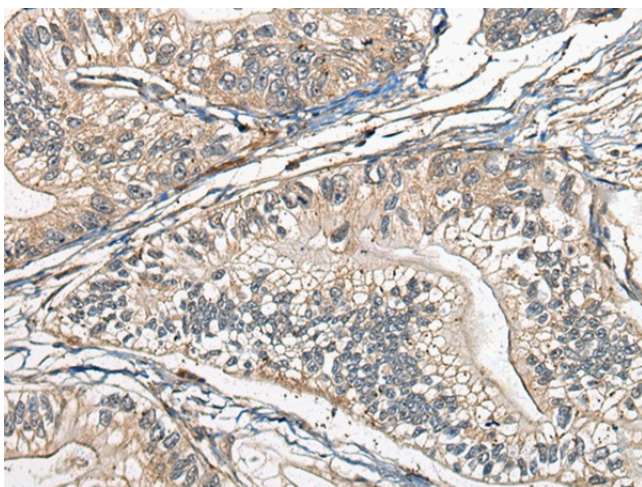
[View online »](#)

Background:

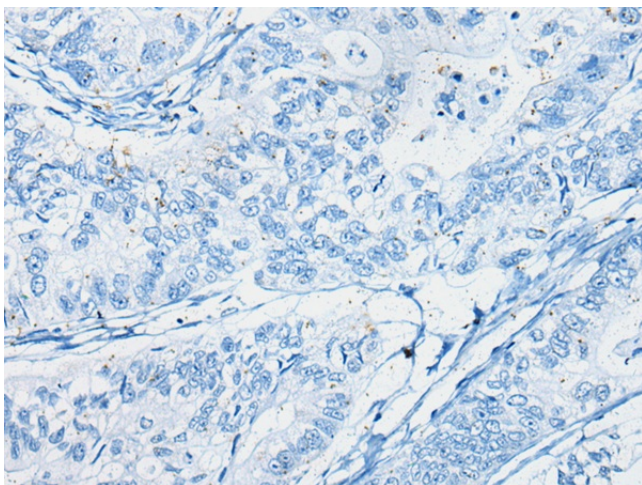
Atg2A (TG2 autophagy related 2 homolog A) is a 1,938 amino acid protein that belongs to the ATG2 family and may play a role in vesicle assembly. Encoded by a gene that maps to human chromosome 11q13.1, Atg2A is conserved in chimpanzee, dog, cow, mouse and rat, and exists as four alternatively spliced isoforms. Undetected in adult tissues, including heart, brain, placenta, lung, liver and skeletal muscle, Atg2A regulation may act as a distinct indicator of autophagic programmed cell death. Atg2A is upregulated in both etoposide- and doxorubicin-induced apoptosis of HeLa cells, suggesting that Atg2A functions as a novel biomarker of topoisomerase II inhibitor-mediated apoptosis. Atg2A associates with Atg2B, indicating that these two related proteins also functionally interact. Atg2A frameshift mutations are linked to gastric and colorectal carcinomas with high microsatellite instability and may contribute to cancer development by deregulating the autophagy process. Required for both autophagosome formation and regulation of lipid droplet morphology and dispersion.

Synonyms:

KIAA0404; MGC117153

Product images:


Immunohistochemistry of paraffin-embedded Human gastric cancer tissue using TA368084 (ATG2A Antibody) at dilution 1/20 (Original magnification: ×200)



Immunohistochemistry of paraffin-embedded Human gastric cancer tissue using TA368084 (ATG2A Antibody) at dilution 1/20, treated with synthetic peptide. (Original magnification: ×200)