

Product datasheet for **TA368082**

C6orf150 (MB21D1) Rabbit Polyclonal Antibody

Product data:

Product Type:	Primary Antibodies
Applications:	IHC, WB
Recommended Dilution:	WB: 500-2000 WB positive control: HT-29 and Lovo cell lysates IHC: 20-100 Positive control: Human liver cancer Predicted cell location: Cytoplasm
Reactivity:	Human
Host:	Rabbit
Isotype:	IgG
Clonality:	Polyclonal
Immunogen:	Synthetic peptide of human CGAS
Formulation:	pH7.4 PBS, 0.05% NaN ₃ , 40% Glycerol
Concentration:	lot specific
Purification:	Antigen affinity purification
Conjugation:	Unconjugated
Storage:	Store at -20°C.
Stability:	1 year
Predicted Protein Size:	59 kDa
Gene Name:	Mab-21 domain containing 1
Database Link:	Entrez Gene 115004 Human Q8N884



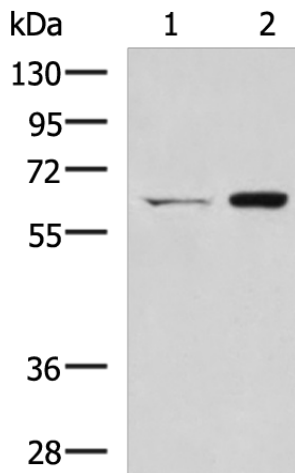
[View online »](#)

Background:

cGAS (cyclic GMP-AMP synthase), also known as MB21D1 (Mab-21 domain containing 1), h-cGAS or C6orf150, is a 522 amino acid cytoplasmic nucleotidyltransferase that catalyzes the formation of cyclic GMP-AMP (cGAMP) from ATP and GTP. cGAS is suggested to have antiviral activity by acting as a key cytosolic DNA sensor. cGAS binds to cytosolic DNA, which leads to cGAMP synthesis and activation of TMEM173, thereby trigger type-I interferon production. Expressed in monocytic cell line THP1, cGAS exists as two alternatively spliced isoforms and is encoded by a gene located on human chromosome 6q13.

Synonyms:

C6orf150; cGAS; h-cGAS

Product images:

Gel: 8%SDS-PAGE

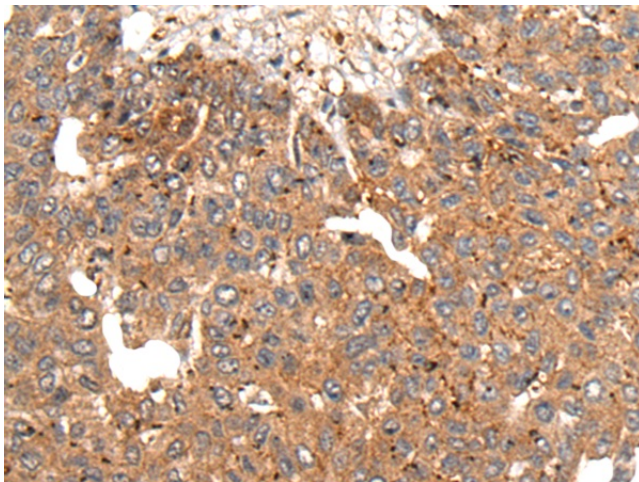
Lysate: 40 µg

Lane 1-2: HT-29 and Lovo cell lysates

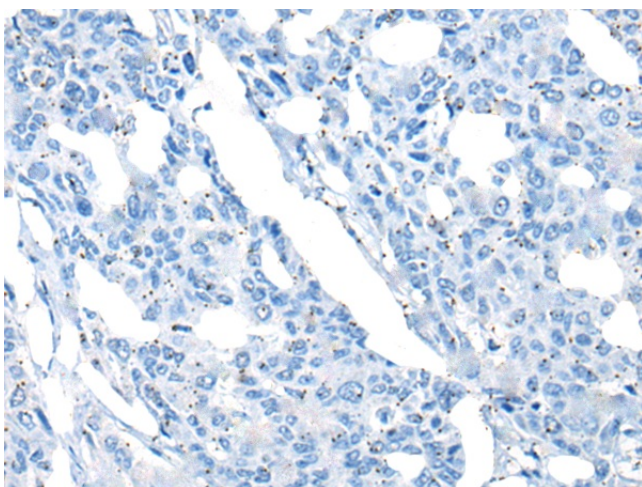
Primary antibody: TA368082 (CGAS Antibody) at dilution 1/400

Secondary antibody: Goat anti rabbit IgG at 1/5000 dilution

Exposure time: 90 seconds



Immunohistochemistry of paraffin-embedded Human liver cancer tissue using TA368082 (CGAS Antibody) at dilution 1/20 (Original magnification: ×200)



Immunohistochemistry of paraffin-embedded Human liver cancer tissue using TA368082 (CGAS Antibody) at dilution 1/20, treated with synthetic peptide. (Original magnification: x200)