

Product datasheet for **TA368079S**

Mortality Factor 4 like 2 (MORF4L2) Rabbit Polyclonal Antibody

Product data:

Product Type:	Primary Antibodies
Applications:	IHC
Recommended Dilution:	IHC: 25-100 Positive control: Human gastric cancer Predicted cell location: Nucleus and Cytoplasm
Reactivity:	Human, Mouse, Rat
Host:	Rabbit
Isotype:	IgG
Clonality:	Polyclonal
Immunogen:	Synthetic peptide of human MORF4L2
Formulation:	pH7.4 PBS, 0.05% NaN ₃ , 40% Glycerol
Purification:	Antigen affinity purification
Conjugation:	Unconjugated
Storage:	Store at -20°C.
Stability:	1 year
Gene Name:	mortality factor 4 like 2
Database Link:	Entrez Gene 9643 Human Q15014



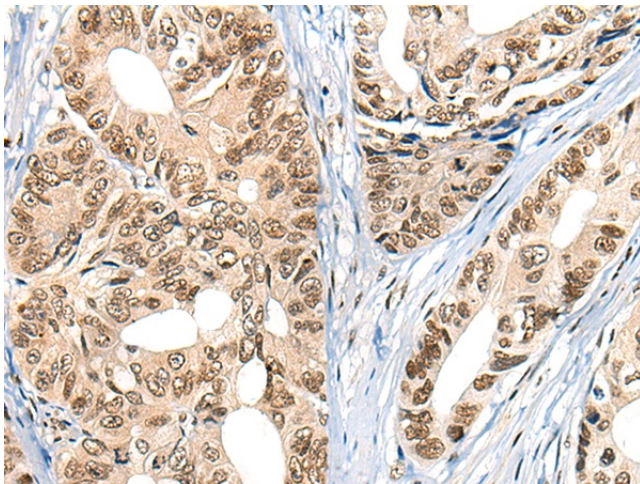
[View online »](#)

Background:

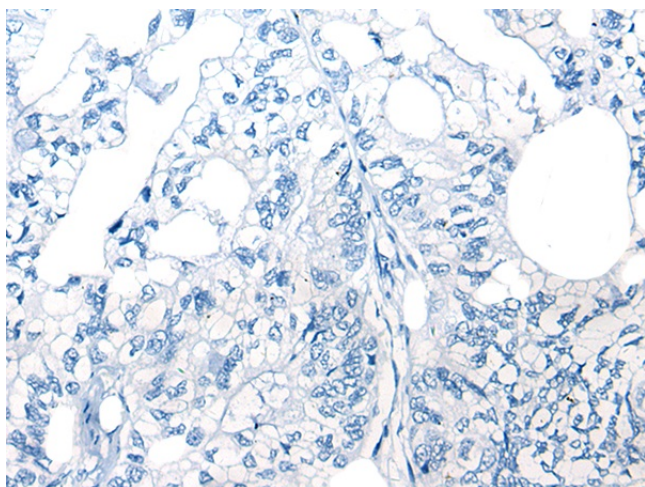
The members of the mortality factor family include mortality factor 4 (MORF4), mortality factor 4 like 1 (MORF4L1), also known as MORF4-related gene 15 (MRG15), and mortality factor 4 like 2 (MORF4L2), also known as MORF-4 related gene X (MRGX). The human MORF4 gene maps to chromosome 4q34.1. MORF4 induces a senescent-like phenotype in complementation group B immortal cell lines. The genes encoding MORF4L1 and MORF4L2 map to chromosomes 15q25.1 and Xq22.2, respectively. MORF4, MORF4L1 and MORF4L2 each contain a C-terminal leucine zipper. An association between MORF4L1, Rb (retinoblastoma tumor suppressor) and PAM14 (protein associated with MORF4L1) suggests a role for MORF4L1 in transcription regulation. MORF4L1 also associates with the histone acetyl transferase MOF. In addition, MORF4, MORF4L1 and MORF4L2 interact with mSin3A and TLE (transducin-like enhancer of split). The MORF/mSin3A/TLE association may repress transcription. In Purkinje cells, MORF4L1 localizes to the dendrites and the nuclei.

Synonyms:

KIAA0026; MORFL2; MRGX; OTTHUMP00000023756

Product images:

Immunohistochemistry of paraffin-embedded Human gastric cancer tissue using [TA368079] (MORF4L2 Antibody) at dilution 1/25 (Original magnification: $\times 200$)



Immunohistochemistry of paraffin-embedded Human gastric cancer tissue using [TA368079] (MORF4L2 Antibody) at dilution 1/25, treated with synthetic peptide. (Original magnification: $\times 200$)