

## Product datasheet for **TA368079**

### Mortality Factor 4 like 2 (MORF4L2) Rabbit Polyclonal Antibody

#### Product data:

|                       |   |
|-----------------------|---|
| Product Type:         | Primary Antibodies  |
| Applications:         | IHC   |
| Recommended Dilution: | IHC: 25-100<br>Positive control: Human gastric cancer<br>Predicted cell location: Nucleus and Cytoplasm |
| Reactivity:           | Human, Mouse, Rat   |
| Host:                 | Rabbit  |
| Isotype:              | IgG   |
| Clonality:            | Polyclonal  |
| Immunogen:            | Synthetic peptide of human MORF4L2  |
| Formulation:          | pH7.4 PBS, 0.05% NaN <sub>3</sub> , 40% Glycerol  |
| Concentration:        | lot specific  |
| Purification:         | Antigen affinity purification   |
| Conjugation:          | Unconjugated  |
| Storage:              | Store at -20°C.   |
| Stability:            | 1 year  |
| Gene Name:            | mortality factor 4 like 2   |
| Database Link:        | <a href="#">Entrez Gene 9643 Human Q15014</a>   |



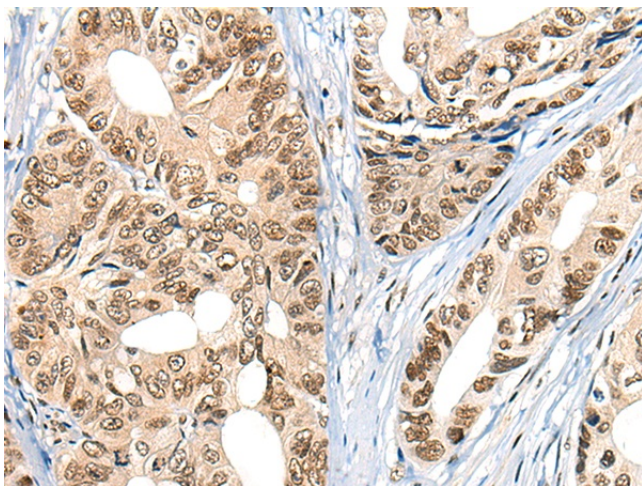
[View online »](#)

**Background:**

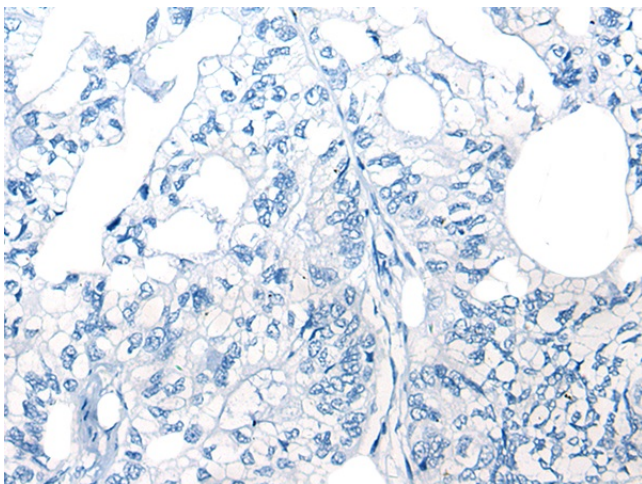
The members of the mortality factor family include mortality factor 4 (MORF4), mortality factor 4 like 1 (MORF4L1), also known as MORF4-related gene 15 (MRG15), and mortality factor 4 like 2 (MORF4L2), also known as MORF-4 related gene X (MRGX). The human MORF4 gene maps to chromosome 4q34.1. MORF4 induces a senescent-like phenotype in complementation group B immortal cell lines. The genes encoding MORF4L1 and MORF4L2 map to chromosomes 15q25.1 and Xq22.2, respectively. MORF4, MORF4L1 and MORF4L2 each contain a C-terminal leucine zipper. An association between MORF4L1, Rb (retinoblastoma tumor suppressor) and PAM14 (protein associated with MORF4L1) suggests a role for MORF4L1 in transcription regulation. MORF4L1 also associates with the histone acetyl transferase MOF. In addition, MORF4, MORF4L1 and MORF4L2 interact with mSin3A and TLE (transducin-like enhancer of split). The MORF/mSin3A/TLE association may repress transcription. In Purkinje cells, MORF4L1 localizes to the dendrites and the nuclei.

**Synonyms:**

KIAA0026; MORFL2; MRGX; OTTHUMP00000023756

**Product images:**

Immunohistochemistry of paraffin-embedded Human gastric cancer tissue using TA368079 (MORF4L2 Antibody) at dilution 1/25 (Original magnification: x200)



Immunohistochemistry of paraffin-embedded Human gastric cancer tissue using TA368079 (MORF4L2 Antibody) at dilution 1/25, treated with synthetic peptide. (Original magnification: x200)