

## Product datasheet for **TA368075**

### CRM1 (XPO1) Rabbit Polyclonal Antibody

#### Product data:

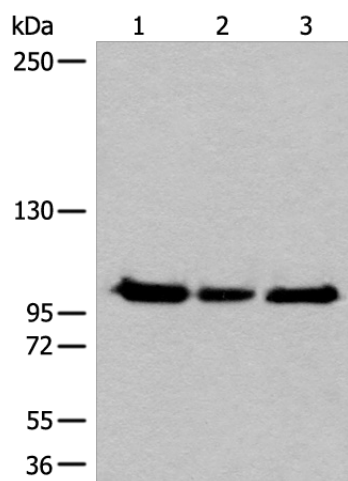
Product Type:	Primary Antibodies
Applications:	IHC, WB
Recommended Dilution:	WB: 500-2000 WB positive control: Hela, K562 and HEPG2 cell lysates IHC: 30-150 Positive control: Human ovarian cancer Predicted cell location: Nucleus
Reactivity:	Human, Mouse, Rat
Host:	Rabbit
Isotype:	IgG
Clonality:	Polyclonal
Immunogen:	Synthetic peptide of human XPO1
Formulation:	pH7.4 PBS, 0.05% NaN <sub>3</sub> , 40% Glycerol
Concentration:	lot specific
Purification:	Antigen affinity purification
Conjugation:	Unconjugated
Storage:	Store at -20°C.
Stability:	1 year
Predicted Protein Size:	123 kDa
Gene Name:	exportin 1
Database Link:	<a href="#">Entrez Gene 7514 Human O14980</a>
Background:	This cell-cycle-regulated gene encodes a protein that mediates leucine-rich nuclear export signal (NES)-dependent protein transport. The protein specifically inhibits the nuclear export of Rev and U snRNAs. It is involved in the control of several cellular processes by controlling the localization of cyclin B, MPAK, and MAPKAP kinase 2. This protein also regulates NFAT and AP-1.



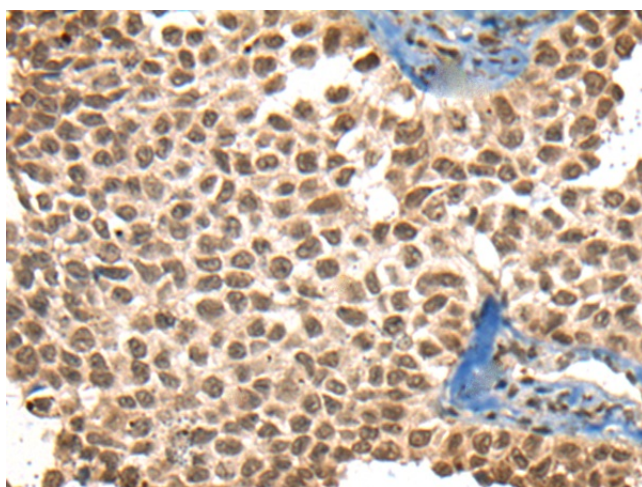
[View online »](#)

Synonyms: CRM1; DKFZp686B1823; Exp1; OTTHUMP00000201471; OTTHUMP00000201493; OTTHUMP00000201494

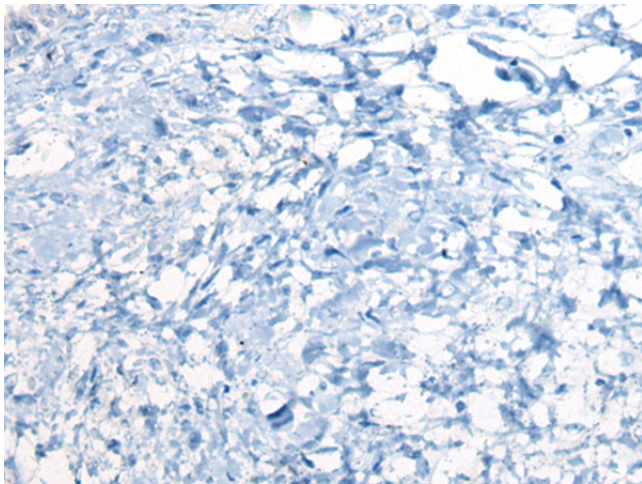
### Product images:



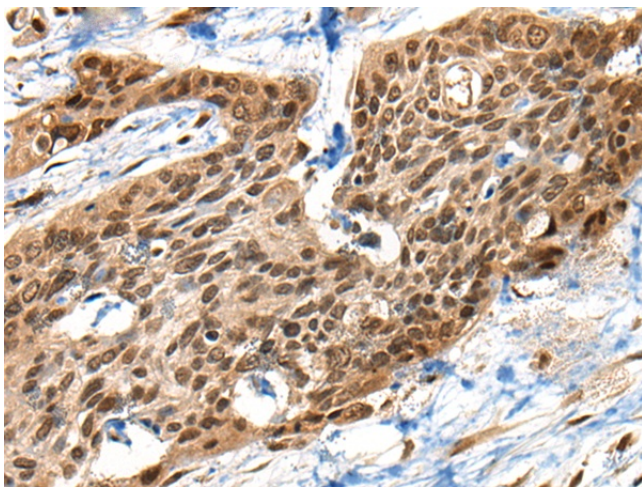
Gel: 6%SDS-PAGE  
Lysate: 40 µg  
Lane 1-3: HeLa  
K562 and HEPG2 cell lysates  
Primary antibody: TA368075 (XPO1 Antibody) at dilution 1/200  
Secondary antibody: Goat anti rabbit IgG at 1/8000 dilution  
Exposure time: 10 seconds



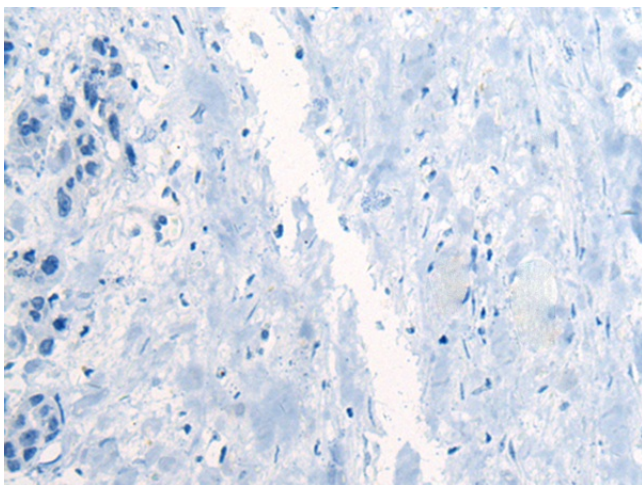
Immunohistochemistry of paraffin-embedded Human ovarian cancer tissue using TA368075 (XPO1 Antibody) at dilution 1/40 (Original magnification: ×200)



Immunohistochemistry of paraffin-embedded Human ovarian cancer tissue using TA368075 (XPO1 Antibody) at dilution 1/40, treated with synthetic peptide. (Original magnification: ×200)



Immunohistochemistry of paraffin-embedded Human esophagus cancer tissue using TA368075 (XPO1 Antibody) at dilution 1/40 (Original magnification: ×200)



Immunohistochemistry of paraffin-embedded Human esophagus cancer tissue using TA368075 (XPO1 Antibody) at dilution 1/40, treated with synthetic peptide. (Original magnification: ×200)