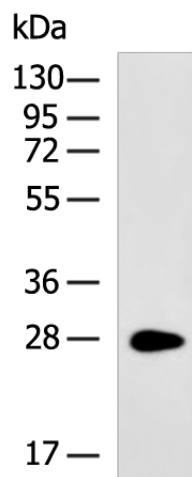
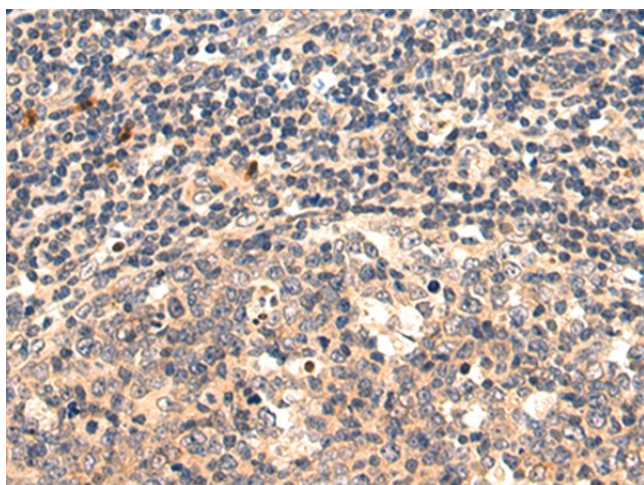


Synonyms: CML3; FLJ37478; Hcml3; MGC117272; NAT8-LIKE

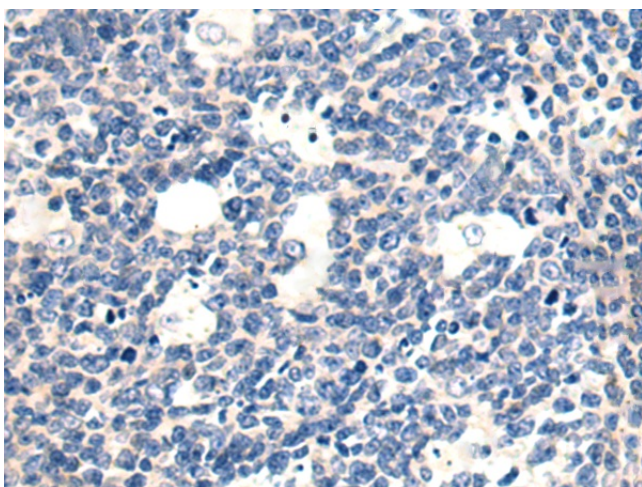
Product images:



Gel: 8%SDS-PAGE
Lysate: 40 μ g
Lane: TM4 cell lysate
Primary antibody: [TA368067] (NAT8L Antibody) at dilution 1/1000
Secondary antibody: Goat anti rabbit IgG at 1/5000 dilution
Exposure time: 15 seconds



Immunohistochemistry of paraffin-embedded Human tonsil tissue using [TA368067] (NAT8L Antibody) at dilution 1/70 (Original magnification: $\times 200$)



Immunohistochemistry of paraffin-embedded Human tonsil tissue using [TA368067] (NAT8L Antibody) at dilution 1/70, treated with synthetic peptide. (Original magnification: $\times 200$)