

Product datasheet for **TA368053S**

Eph receptor A6 (EPHA6) Rabbit Polyclonal Antibody

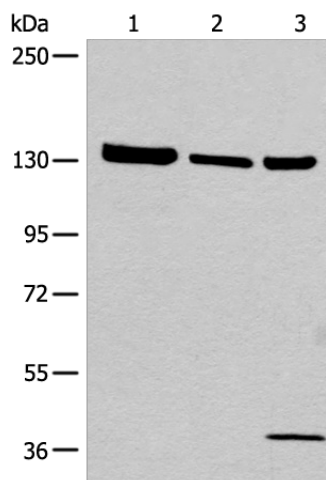
Product data:

Product Type:	Primary Antibodies
Applications:	IHC, WB
Recommended Dilution:	WB: 500-2000 WB positive control: 293T cell, Human testis tissue lysate, A549 cell lysates IHC: 30-150 Positive control: Human liver cancer Predicted cell location: Cytoplasm and Cell membrane
Reactivity:	Human, Mouse, Rat
Host:	Rabbit
Isotype:	IgG
Clonality:	Polyclonal
Immunogen:	Synthetic peptide of human EPHA6
Formulation:	pH7.4 PBS, 0.05% NaN ₃ , 40% Glycerol
Purification:	Antigen affinity purification
Conjugation:	Unconjugated
Storage:	Store at -20°C.
Stability:	1 year
Predicted Protein Size:	116 kDa
Gene Name:	EPH receptor A6
Database Link:	Entrez Gene 285220 Human Q9UF33
Background:	Receptor tyrosine kinase which binds promiscuously GPI-anchored ephrin-A family ligands residing on adjacent cells, leading to contact-dependent bidirectional signaling into neighboring cells. The signaling pathway downstream of the receptor is referred to as forward signaling while the signaling pathway downstream of the ephrin ligand is referred to as reverse signaling.
Synonyms:	DKFZp434C1418; EHK2; EPA6; FLJ35246; PRO57066

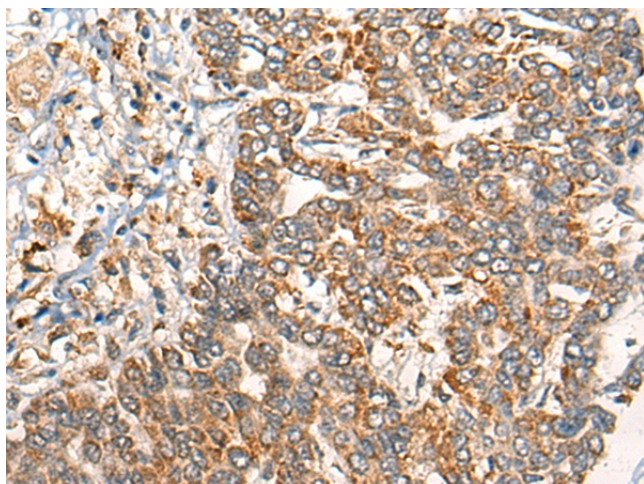


[View online »](#)

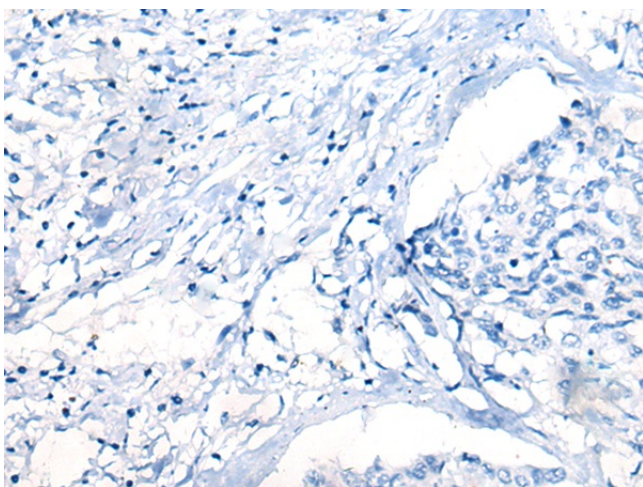
Product images:



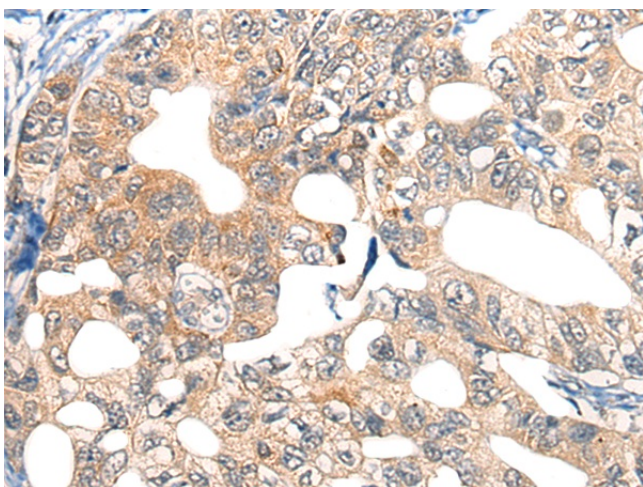
Gel: 6%SDS-PAGE
 Lysate: 40 μ g
 Lane 1-3: 293T cell
 Human testis tissue lysate
 A549 cell lysates
 Primary antibody: [TA368053] (EPHA6 Antibody)
 at dilution 1/800
 Secondary antibody: Goat anti rabbit IgG at
 1/8000 dilution
 Exposure time: 10 seconds



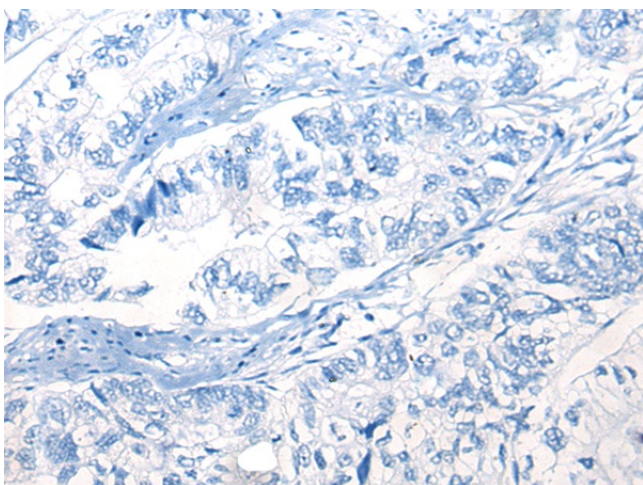
Immunohistochemistry of paraffin-embedded
 Human liver cancer tissue using [TA368053]
 (EPHA6 Antibody) at dilution 1/40 (Original
 magnification: \times 200)



Immunohistochemistry of paraffin-embedded Human liver cancer tissue using [TA368053] (EPHA6 Antibody) at dilution 1/40, treated with synthetic peptide. (Original magnification: ×200)



Immunohistochemistry of paraffin-embedded Human gastric cancer tissue using [TA368053] (EPHA6 Antibody) at dilution 1/40 (Original magnification: ×200)



Immunohistochemistry of paraffin-embedded Human gastric cancer tissue using [TA368053] (EPHA6 Antibody) at dilution 1/40, treated with synthetic peptide. (Original magnification: ×200)