

Product datasheet for **TA368042**

PRMT6 Rabbit Polyclonal Antibody

Product data:

Product Type:	Primary Antibodies
Applications:	IHC, WB
Recommended Dilution:	WB: 200-1000 WB positive control: NIH/3T3 and 293T cell lysates IHC: 20-100 Positive control: Human ovarian cancer Predicted cell location: Nucleus
Reactivity:	Human, Mouse
Host:	Rabbit
Isotype:	IgG
Clonality:	Polyclonal
Immunogen:	Synthetic peptide of human PRMT6
Formulation:	pH7.4 PBS, 0.05% NaN ₃ , 40% Glycerol
Concentration:	lot specific
Purification:	Antigen affinity purification
Conjugation:	Unconjugated
Storage:	Store at -20°C.
Stability:	1 year
Predicted Protein Size:	42 kDa
Gene Name:	protein arginine methyltransferase 6
Database Link:	Entrez Gene 55170 Human Q96LA8



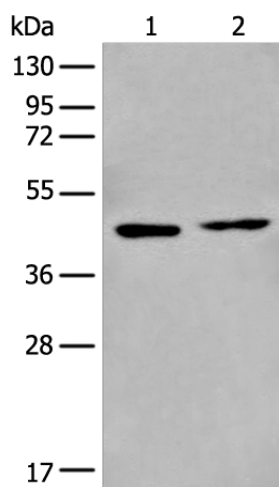
[View online »](#)

Background:

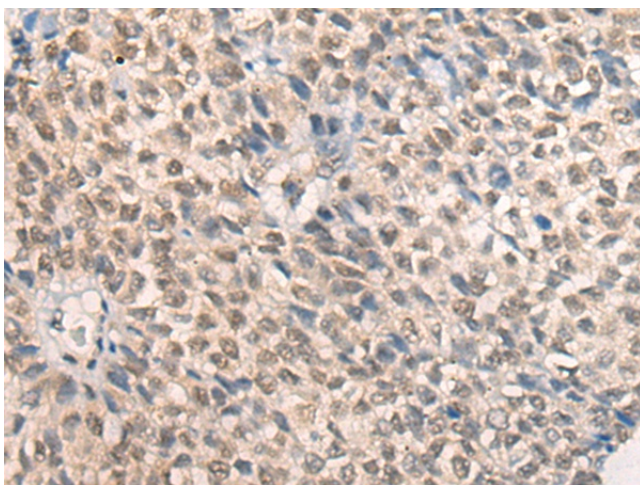
The protein encoded by this gene belongs to the arginine N-methyltransferase family, which catalyze the sequential transfer of methyl group from S-adenosyl-L-methionine to the side chain nitrogens of arginine residues within proteins, to form methylated arginine derivatives and S-adenosyl-L-homocysteine. This protein can catalyze both, the formation of omega-N monomethylarginine and asymmetrical dimethylarginine, with a strong preference for the latter. It specifically mediates the asymmetric dimethylation of Arg2 of histone H3, and the methylated form represents a specific tag for epigenetic transcriptional repression. This protein also forms a complex with, and methylates DNA polymerase beta, resulting in stimulation of polymerase activity by enhancing DNA binding and processivity.

Synonyms:

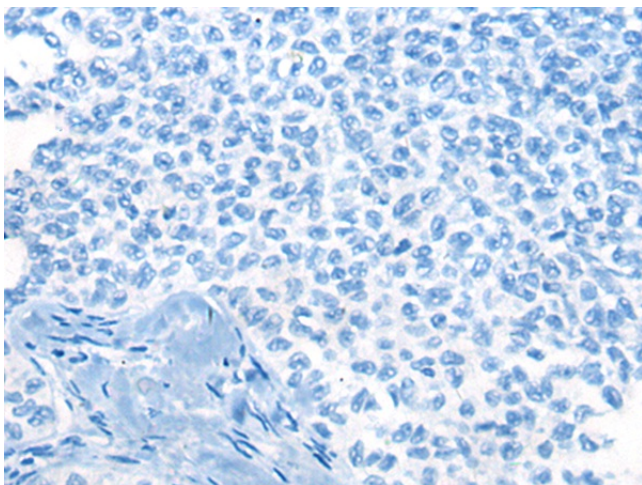
FLJ10559; FLJ51477; HRMT1L6

Product images:

Gel: 8%SDS-PAGE
Lysate: 40 μ g
Lane 1-2: NIH/3T3 and 293T cell lysates
Primary antibody: TA368042 (PRMT6 Antibody) at dilution 1/350
Secondary antibody: Goat anti rabbit IgG at 1/8000 dilution
Exposure time: 1 minute



Immunohistochemistry of paraffin-embedded Human ovarian cancer tissue using TA368042 (PRMT6 Antibody) at dilution 1/25 (Original magnification: \times 200)



Immunohistochemistry of paraffin-embedded Human ovarian cancer tissue using TA368042 (PRMT6 Antibody) at dilution 1/25, treated with synthetic peptide. (Original magnification: ×200)