

Product datasheet for **TA368041S**

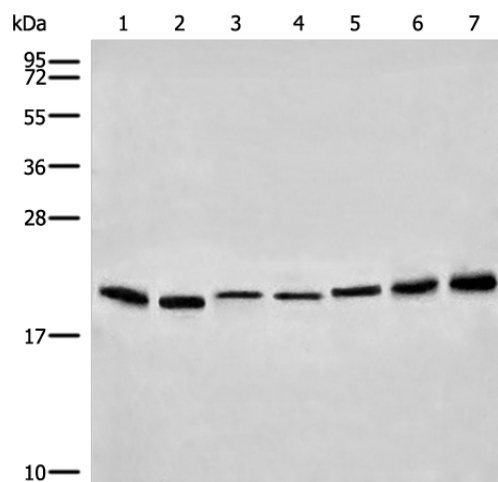
PMP22 Rabbit Polyclonal Antibody

Product data:

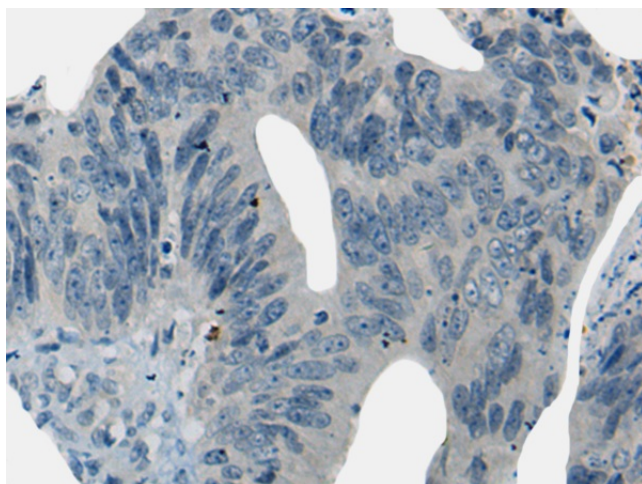
Product Type:	Primary Antibodies
Applications:	IHC, WB
Recommended Dilution:	WB: 200-1000 WB positive control: Human cerebrum tissue□A172 cell□Mouse lung tissue□293T cell□231 cell□Mouse liver tissue□Mouse brain tissue lysates IHC: 20-100 Positive control: Human colorectal cancer Predicted cell location: Cell membrane
Reactivity:	Human, Mouse
Host:	Rabbit
Isotype:	IgG
Clonality:	Polyclonal
Immunogen:	Synthetic peptide of human PMP22
Formulation:	pH7.4 PBS, 0.05% NaN ₃ , 40% Glycerol
Purification:	Antigen affinity purification
Conjugation:	Unconjugated
Storage:	Store at -20°C.
Stability:	1 year
Predicted Protein Size:	18 kDa
Gene Name:	peripheral myelin protein 22
Database Link:	Entrez Gene 5376 Human Q01453
Background:	This gene encodes an integral membrane protein that is a major component of myelin in the peripheral nervous system. Studies suggest two alternately used promoters drive tissue-specific expression. Various mutations of this gene are causes of Charcot-Marie-Tooth disease Type IA, Dejerine-Sottas syndrome, and hereditary neuropathy with liability to pressure palsies. Alternative splicing results in multiple transcript variants.
Synonyms:	CMT1A; CMT1E; DSS; GAS-3; GAS3; HMSNIA; HNPP; MGC20769; PMP-22; Sp110



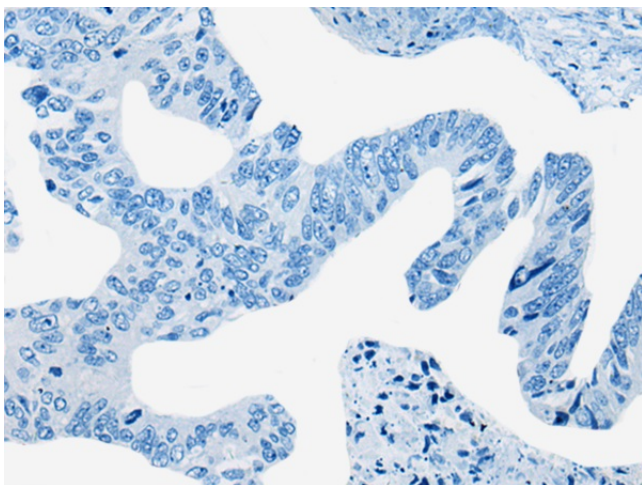
[View online »](#)

Product images:


Gel: 12%SDS-PAGE
 Lysate: 40 μ g
 Lane 1-7: Human cerebrum tissue
 A172 cell
 Mouse lung tissue
 293T cell
 231 cell
 Mouse liver tissue
 Mouse brain tissue lysates
 Primary antibody: [TA368041] (PMP22 Antibody)
 at dilution 1/200
 Secondary antibody: Goat anti rabbit IgG at
 1/8000 dilution
 Exposure time: 10 seconds



Immunohistochemistry of paraffin-embedded
 Human colorectal cancer tissue using [TA368041]
 (PMP22 Antibody) at dilution 1/20 (Original
 magnification: \times 200)



Immunohistochemistry of paraffin-embedded Human colorectal cancer tissue using [TA368041] (PMP22 Antibody) at dilution 1/20, treated with synthetic peptide. (Original magnification: x200)