

## Product datasheet for **TA368041**

### PMP22 Rabbit Polyclonal Antibody

#### Product data:

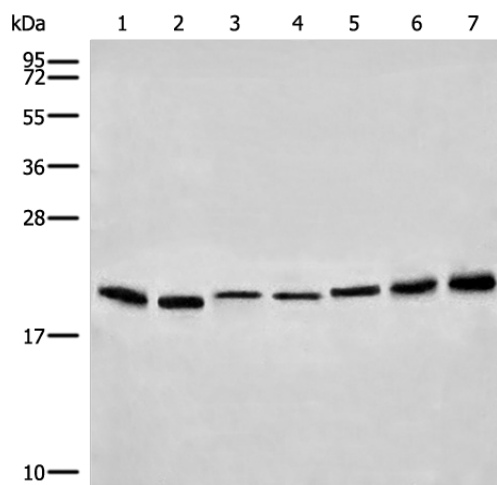
Product Type:	Primary Antibodies
Applications:	IHC, WB
Recommended Dilution:	WB: 200-1000 WB positive control: Human cerebrum tissue□A172 cell□Mouse lung tissue□293T cell□231 cell□Mouse liver tissue□Mouse brain tissue lysates IHC: 20-100 Positive control: Human colorectal cancer Predicted cell location: Cell membrane
Reactivity:	Human, Mouse
Host:	Rabbit
Isotype:	IgG
Clonality:	Polyclonal
Immunogen:	Synthetic peptide of human PMP22
Formulation:	pH7.4 PBS, 0.05% NaN <sub>3</sub> , 40% Glycerol
Concentration:	lot specific
Purification:	Antigen affinity purification
Conjugation:	Unconjugated
Storage:	Store at -20°C.
Stability:	1 year
Predicted Protein Size:	18 kDa
Gene Name:	peripheral myelin protein 22
Database Link:	<a href="#">Entrez Gene 5376 Human Q01453</a>
Background:	This gene encodes an integral membrane protein that is a major component of myelin in the peripheral nervous system. Studies suggest two alternately used promoters drive tissue-specific expression. Various mutations of this gene are causes of Charcot-Marie-Tooth disease Type IA, Dejerine-Sottas syndrome, and hereditary neuropathy with liability to pressure palsies. Alternative splicing results in multiple transcript variants.



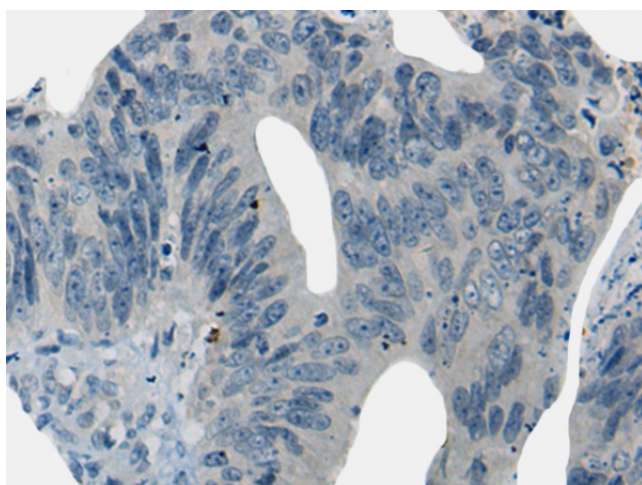
[View online »](#)

**Synonyms:** CMT1A; CMT1E; DSS; GAS-3; GAS3; HMSNIA; HNPP; MGC20769; PMP-22; Sp110

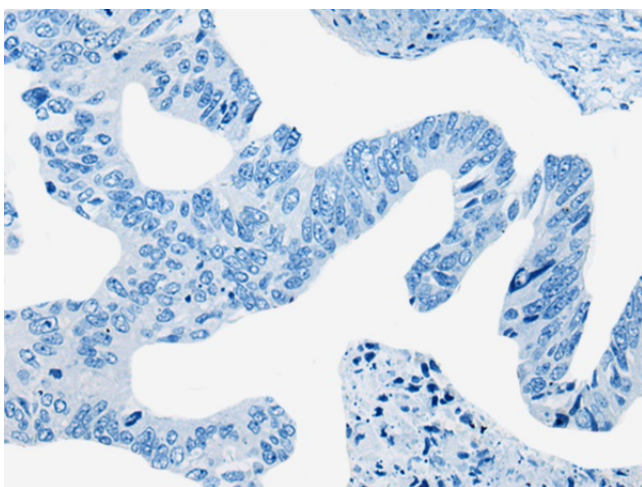
**Product images:**



Gel: 12%SDS-PAGE  
 Lysate: 40 µg  
 Lane 1-7: Human cerebrum tissue  
 A172 cell  
 Mouse lung tissue  
 293T cell  
 231 cell  
 Mouse liver tissue  
 Mouse brain tissue lysates  
 Primary antibody: TA368041 (PMP22 Antibody) at dilution 1/200  
 Secondary antibody: Goat anti rabbit IgG at 1/8000 dilution  
 Exposure time: 10 seconds



Immunohistochemistry of paraffin-embedded Human colorectal cancer tissue using TA368041 (PMP22 Antibody) at dilution 1/20 (Original magnification: ×200)



Immunohistochemistry of paraffin-embedded Human colorectal cancer tissue using TA368041 (PMP22 Antibody) at dilution 1/20, treated with synthetic peptide. (Original magnification:  $\times 200$ )