

## Product datasheet for **TA368025S**

### CoREST (RCOR1) Rabbit Polyclonal Antibody

#### Product data:

Product Type:	Primary Antibodies
Applications:	IHC, WB
Recommended Dilution:	WB: 200-1000 WB positive control: A431,231 and PC-3 cell lysates IHC: 20-100 Positive control: Human ovarian cancer Predicted cell location: Nucleus
Reactivity:	Human, Mouse
Host:	Rabbit
Isotype:	IgG
Clonality:	Polyclonal
Immunogen:	Synthetic peptide of human RCOR1
Formulation:	pH7.4 PBS, 0.05% NaN <sub>3</sub> , 40% Glycerol
Purification:	Antigen affinity purification
Conjugation:	Unconjugated
Storage:	Store at -20°C.
Stability:	1 year
Predicted Protein Size:	53 kDa
Gene Name:	REST corepressor 1
Database Link:	<a href="#">Entrez Gene 23186 Human Q9UKL0</a>



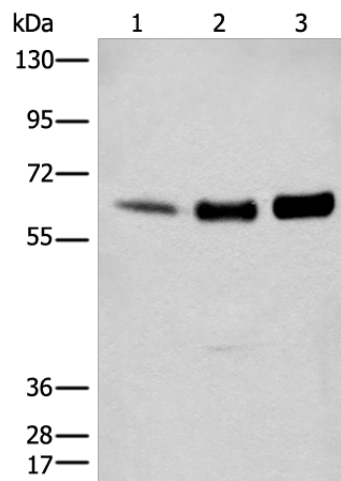
[View online »](#)

**Background:**

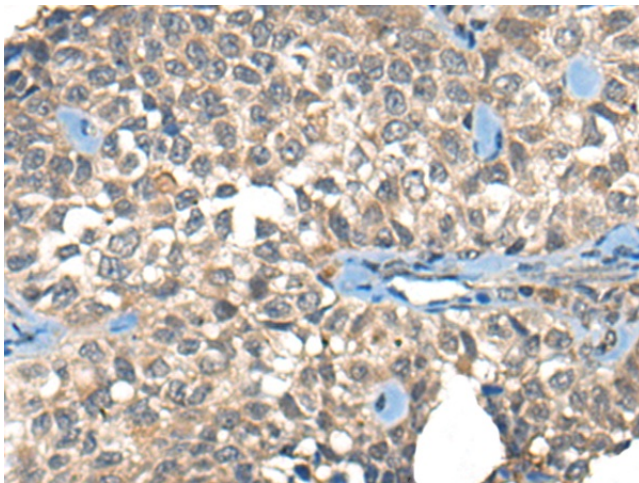
Essential component of the BHC complex, a corepressor complex that represses transcription of neuron-specific genes in non-neuronal cells. The BHC complex is recruited at RE1/NRSE sites by REST and acts by deacetylating and demethylating specific sites on histones, thereby acting as a chromatin modifier. In the BHC complex, it serves as a molecular beacon for the recruitment of molecular machinery, including MeCP2 and SUV39H1, that imposes silencing across a chromosomal interval. Plays a central role in demethylation of Lys-4 of histone H3 by promoting demethylase activity of KDM1A on core histones and nucleosomal substrates. It also protects KDM1A from the proteasome. Component of a RCOR/GFI/KDM1A/HDAC complex that suppresses, via histone deacetylase (HDAC) recruitment, a number of genes implicated in multilineage blood cell development and controls hematopoietic differentiation.

**Synonyms:**

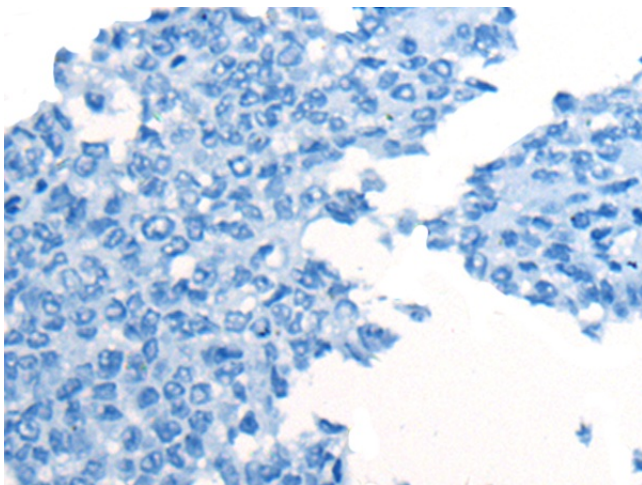
COREST; KIAA0071; RCOR

**Product images:**


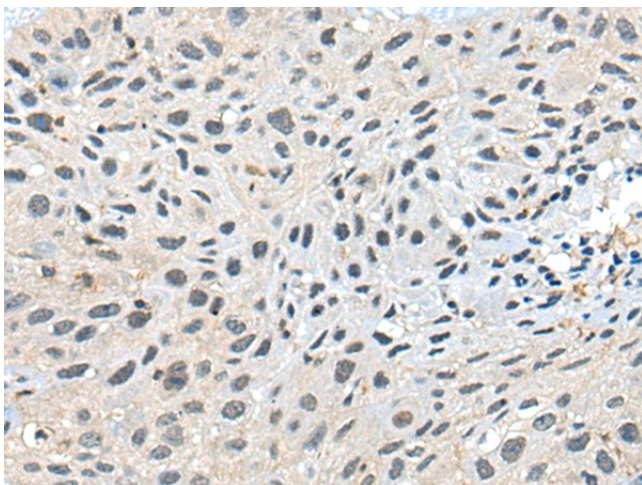
Gel: 8%SDS-PAGE  
 Lysate: 40 µg  
 Lane 1-3: A431  
 231 and PC-3 cell lysates  
 Primary antibody: [TA368025] (RCOR1 Antibody)  
 at dilution 1/200  
 Secondary antibody: Goat anti rabbit IgG at  
 1/8000 dilution  
 Exposure time: 2 minutes



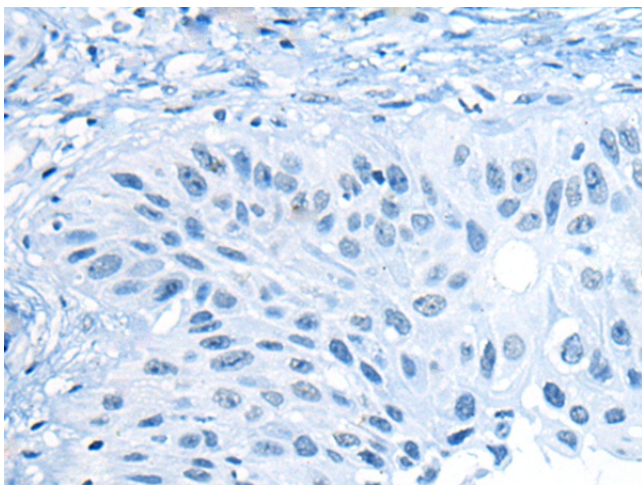
Immunohistochemistry of paraffin-embedded  
 Human ovarian cancer tissue using [TA368025]  
 (RCOR1 Antibody) at dilution 1/20 (Original  
 magnification: x200)



Immunohistochemistry of paraffin-embedded Human ovarian cancer tissue using [TA368025] (RCOR1 Antibody) at dilution 1/20, treated with synthetic peptide. (Original magnification: ×200)



Immunohistochemistry of paraffin-embedded Human lung cancer tissue using [TA368025] (RCOR1 Antibody) at dilution 1/20 (Original magnification: ×200)



Immunohistochemistry of paraffin-embedded Human lung cancer tissue using [TA368025] (RCOR1 Antibody) at dilution 1/20, treated with synthetic peptide. (Original magnification: ×200)