

## Product datasheet for **TA368013S**

### CLPP Rabbit Polyclonal Antibody

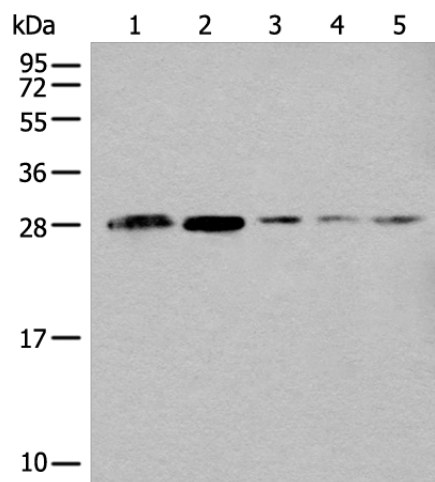
#### Product data:

Product Type:	Primary Antibodies
Applications:	WB
Recommended Dilution:	WB: 200-1000 WB positive control: Human heart tissue,A431,Hela,A549 and HEPG2 cell lysates
Reactivity:	Human, Mouse
Host:	Rabbit
Isotype:	IgG
Clonality:	Polyclonal
Immunogen:	Synthetic peptide of human CLPP
Formulation:	pH7.4 PBS, 0.05% NaN <sub>3</sub> , 40% Glycerol
Purification:	Antigen affinity purification
Conjugation:	Unconjugated
Storage:	Store at -20°C.
Stability:	1 year
Predicted Protein Size:	30 kDa
Gene Name:	caseinolytic mitochondrial matrix peptidase proteolytic subunit
Database Link:	<a href="#">Entrez Gene 8192 Human Q16740</a>
Background:	The protein encoded by this gene belongs to the peptidase family S14 and hydrolyzes proteins into small peptides in the presence of ATP and magnesium. The protein is transported into mitochondrial matrix and is associated with the inner mitochondrial membrane.
Synonyms:	CLPP



[View online »](#)

## Product images:



Gel: 12%SDS-PAGE

Lysate: 40  $\mu$ g

Lane 1-5: Human heart tissue  
A431

HeLa

A549 and HEPG2 cell lysates

Primary antibody: [TA368013] (CLPP Antibody) at  
dilution 1/200

Secondary antibody: Goat anti rabbit IgG at  
1/8000 dilution

Exposure time: 10 seconds