

Product datasheet for **TA368006S**

CLACP (COL25A1) Rabbit Polyclonal Antibody

Product data:

Product Type:	Primary Antibodies
Applications:	IHC, WB
Recommended Dilution:	WB: 200-1000 WB positive control: A549, Jurkat and A172 cell, Human testis tissue, HeLa cell lysates IHC: 30-150 Positive control: Human liver cancer Predicted cell location: Cytoplasm
Reactivity:	Human, Mouse
Host:	Rabbit
Isotype:	IgG
Clonality:	Polyclonal
Immunogen:	Synthetic peptide of human COL25A1
Formulation:	pH7.4 PBS, 0.05% NaN ₃ , 40% Glycerol
Purification:	Antigen affinity purification
Conjugation:	Unconjugated
Storage:	Store at -20°C.
Stability:	1 year
Predicted Protein Size:	65 kDa
Gene Name:	collagen type XXV alpha 1
Database Link:	Entrez Gene 84570 Human Q9BXS0

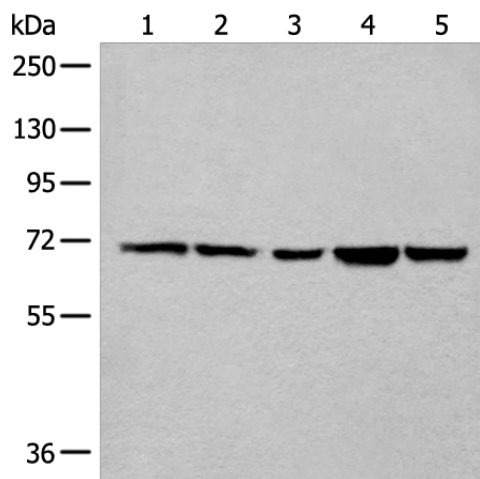
Background: This gene encodes a brain-specific membrane associated collagen. A product of proteolytic processing of the encoded protein, CLAC (collagenous Alzheimer amyloid plaque component), binds to amyloid beta-peptides found in Alzheimer amyloid plaques but CLAC inhibits rather than facilitates amyloid fibril elongation (PMID: 16300410). A study of over-expression of this collagen in mice, however, found changes in pathology and behavior suggesting that the encoded protein may promote amyloid plaque formation (PMID: 19548013). Multiple transcript variants encoding different isoforms have been found for this gene.



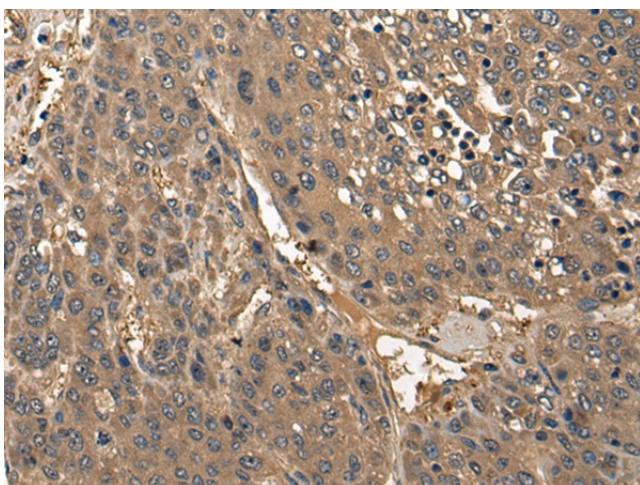
[View online »](#)

Synonyms: AMY; CLAC; CLAC-P; CLACP; OTTHUMP00000196081; OTTHUMP00000196082

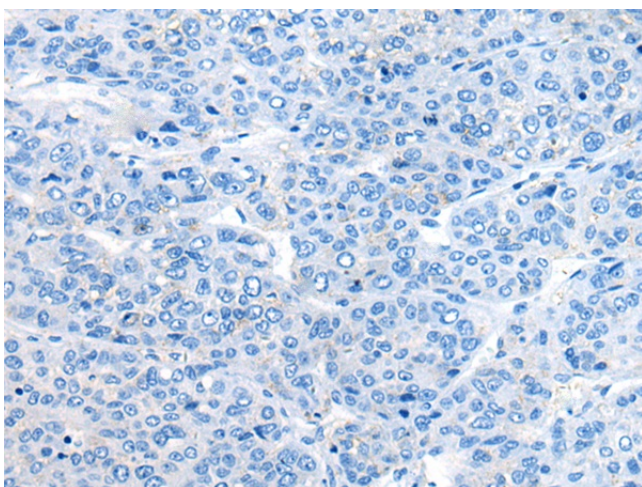
Product images:



Gel: 8%SDS-PAGE
 Lysate: 40 µg
 Lane 1-5: A549
 Jurkat and A172 cell
 Human testis tissue
 Hela cell lysates
 Primary antibody: [TA368006] (COL25A1
 Antibody) at dilution 1/200
 Secondary antibody: Goat anti rabbit IgG at
 1/8000 dilution
 Exposure time: 5 seconds



Immunohistochemistry of paraffin-embedded
 Human liver cancer tissue using [TA368006]
 (COL25A1 Antibody) at dilution 1/25 (Original
 magnification: ×200)



Immunohistochemistry of paraffin-embedded Human liver cancer tissue using [TA368006] (COL25A1 Antibody) at dilution 1/25, treated with synthetic peptide. (Original magnification: ×200)