

Product datasheet for **TA368002**

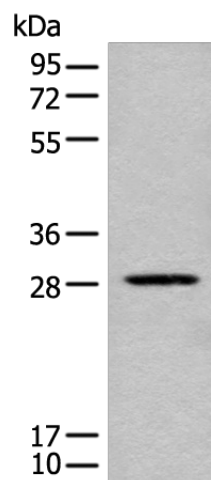
CITED1 Rabbit Polyclonal Antibody

Product data:

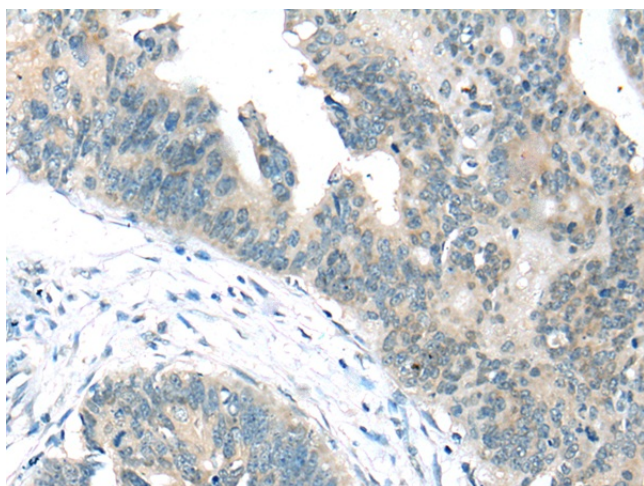
Product Type:	Primary Antibodies
Applications:	IHC, WB
Recommended Dilution:	WB: 200-1000 WB positive control: Human testis tissue lysate IHC: 25-100 Positive control: Human colorectal cancer Predicted cell location: Cytoplasm
Reactivity:	Human, Mouse
Host:	Rabbit
Isotype:	IgG
Clonality:	Polyclonal
Immunogen:	Synthetic peptide of human CITED1
Formulation:	pH7.4 PBS, 0.05% NaN ₃ , 40% Glycerol
Concentration:	lot specific
Purification:	Antigen affinity purification
Conjugation:	Unconjugated
Storage:	Store at -20°C.
Stability:	1 year
Predicted Protein Size:	20 kDa
Gene Name:	Cbp/p300 interacting transactivator with Glu/Asp rich carboxy-terminal domain 1
Database Link:	Entrez Gene 4435 Human Q99966
Background:	This gene encodes a member of the CREB-binding protein/p300-interacting transactivator with Asp/Glu-rich C-terminal domain (CITED) family of proteins. The encoded protein, also known as melanocyte-specific gene 1, may function as a transcriptional coactivator and may play a role in pigmentation of melanocytes. Alternatively spliced transcript variants have been described.
Synonyms:	MSG1



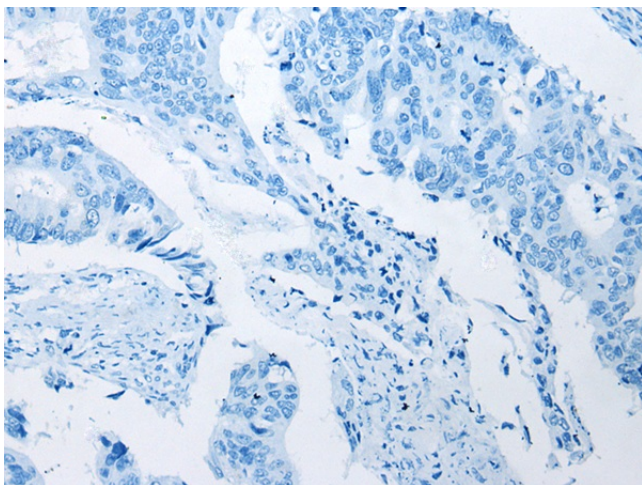
[View online »](#)

Product images:

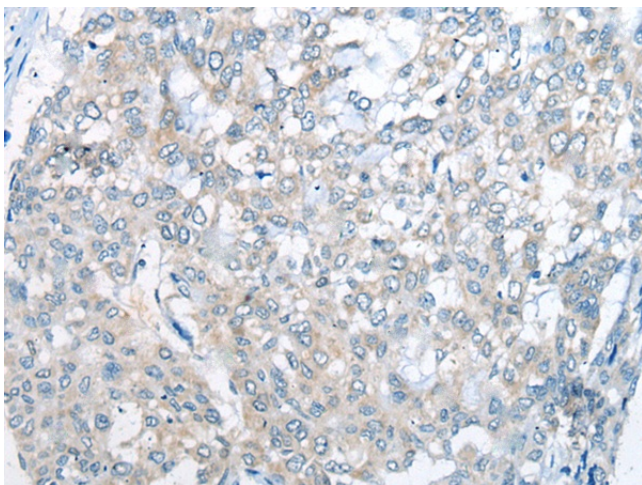
Gel: 12%SDS-PAGE
Lysate: 40 μ g
Lane: Human testis tissue lysate
Primary antibody: TA368002 (CITED1 Antibody) at dilution 1/300
Secondary antibody: Goat anti rabbit IgG at 1/8000 dilution
Exposure time: 10 seconds



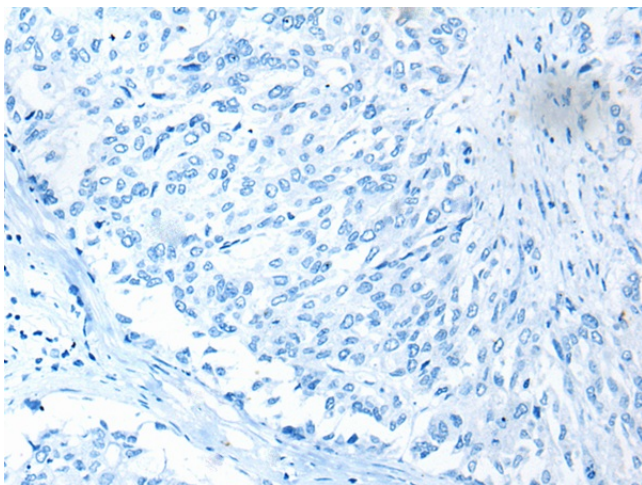
Immunohistochemistry of paraffin-embedded Human colorectal cancer tissue using TA368002 (CITED1 Antibody) at dilution 1/25 (Original magnification: \times 200)



Immunohistochemistry of paraffin-embedded Human colorectal cancer tissue using TA368002 (CITED1 Antibody) at dilution 1/25, treated with synthetic peptide. (Original magnification: ×200)



Immunohistochemistry of paraffin-embedded Human liver cancer tissue using TA368002 (CITED1 Antibody) at dilution 1/25 (Original magnification: ×200)



Immunohistochemistry of paraffin-embedded Human liver cancer tissue using TA368002 (CITED1 Antibody) at dilution 1/25, treated with synthetic peptide. (Original magnification: ×200)