

## Product datasheet for **TA36800S**

### CHST3 Rabbit Polyclonal Antibody

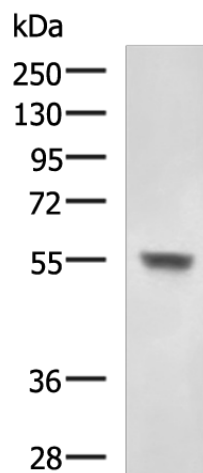
#### Product data:

Product Type:	Primary Antibodies
Applications:	IHC, WB
Recommended Dilution:	WB: 500-2000 WB positive control: Mouse heart tissue lysates IHC: 50-100 Positive control: Human brain Predicted cell location: Cytoplasm
Reactivity:	Human, Mouse, Rat
Host:	Rabbit
Isotype:	IgG
Clonality:	Polyclonal
Immunogen:	Synthetic peptide of human CHST3
Formulation:	pH7.4 PBS, 0.05% NaN <sub>3</sub> , 40% Glycerol
Purification:	Antigen affinity purification
Conjugation:	Unconjugated
Storage:	Store at -20°C.
Stability:	1 year
Predicted Protein Size:	55 kDa
Gene Name:	carbohydrate sulfotransferase 3
Database Link:	<a href="#">Entrez Gene 9469 Human Q7LGC8</a>
Background:	This gene encodes an enzyme which catalyzes the sulfation of chondroitin, a proteoglycan found in the extracellular matrix and most cells which is involved in cell migration and differentiation. Mutations in this gene are associated with spondylepiphyseal dysplasia and humerospinal dysostosis.
Synonyms:	C6ST; C6ST-1; C6ST1; GST-0; HSD

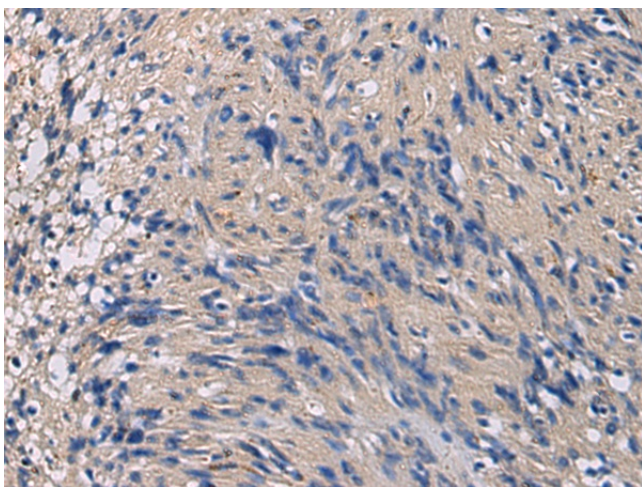


[View online »](#)

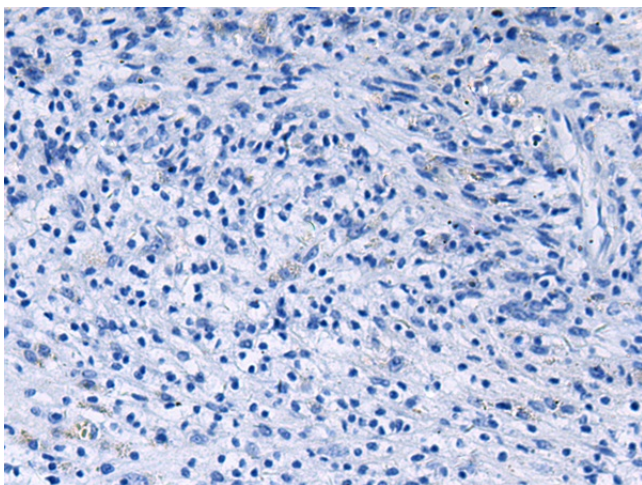
## Product images:



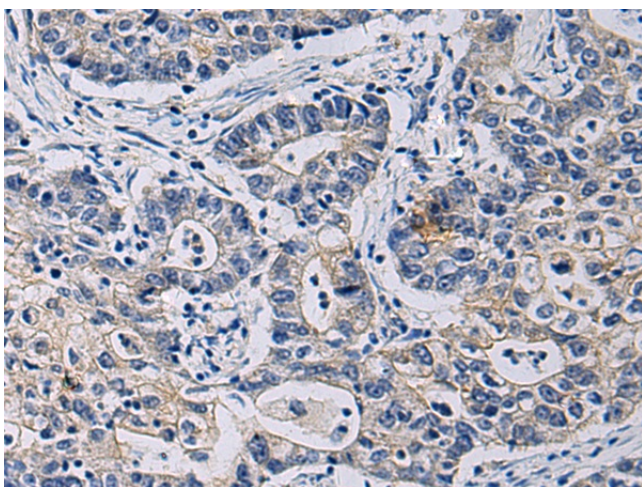
Gel: 8%SDS-PAGE  
Lysate: 40  $\mu$ g  
Lane: Mouse heart tissue lysates  
Primary antibody: [TA368000] (CHST3 Antibody) at dilution 1/800  
Secondary antibody: Goat anti rabbit IgG at 1/5000 dilution  
Exposure time: 2 minutes



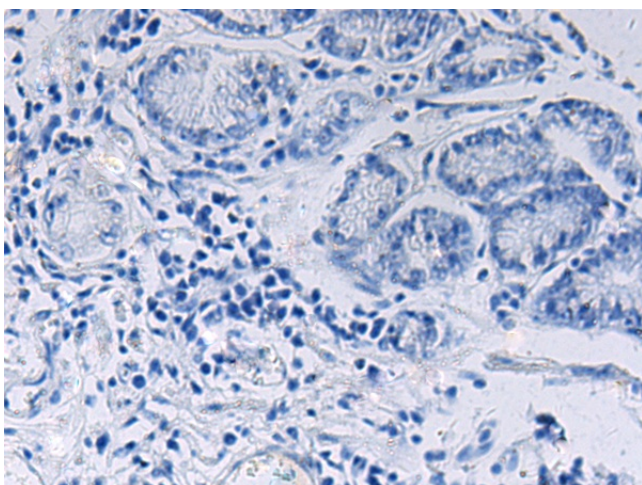
Immunohistochemistry of paraffin-embedded Human brain tissue using [TA368000] (CHST3 Antibody) at dilution 1/35 (Original magnification:  $\times$ 200)



Immunohistochemistry of paraffin-embedded Human brain tissue using [TA368000] (CHST3 Antibody) at dilution 1/35, treated with synthetic peptide. (Original magnification: x200)



Immunohistochemistry of paraffin-embedded Human gastric cancer tissue using [TA368000] (CHST3 Antibody) at dilution 1/35 (Original magnification: x200)



Immunohistochemistry of paraffin-embedded Human gastric cancer tissue using [TA368000] (CHST3 Antibody) at dilution 1/35, treated with synthetic peptide. (Original magnification: x200)