

## Product datasheet for **TA367991**

### CHADL Rabbit Polyclonal Antibody

#### Product data:

Product Type:	Primary Antibodies
Applications:	IHC
Recommended Dilution:	IHC: 20-100 Positive control: Human colorectal cancer Predicted cell location: Cytoplasm
Reactivity:	Human
Host:	Rabbit
Isotype:	IgG
Clonality:	Polyclonal
Immunogen:	Synthetic peptide of human CHADL
Formulation:	pH7.4 PBS, 0.05% NaN <sub>3</sub> , 40% Glycerol
Concentration:	lot specific
Purification:	Antigen affinity purification
Conjugation:	Unconjugated
Storage:	Store at -20°C.
Stability:	1 year
Gene Name:	chondroadherin like
Database Link:	<a href="#">Entrez Gene 150356 Human Q6NUI6</a>



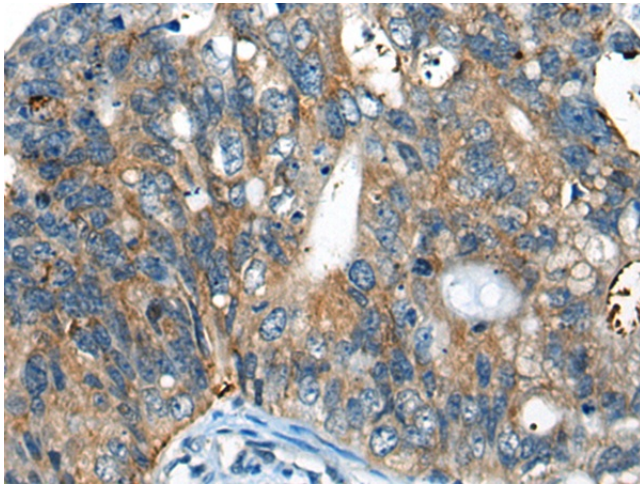
[View online »](#)

**Background:**

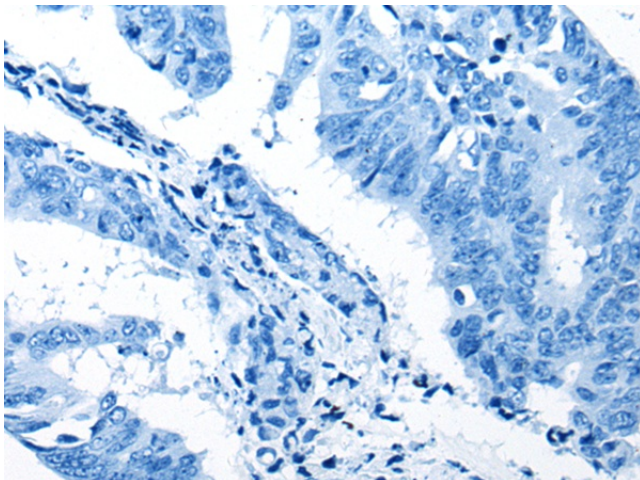
Members of the small leucine-rich proteoglycan (SLRP) family are mostly extracellular proteins that function upstream of multiple signaling cascades. They affect intracellular phosphorylation and modulate distinct pathways, such as those driven by Toll-like receptors, TGF $\beta$  and receptor tyrosine kinases. As a member of the SLRP family, CHADL (Chondroadherin-like protein) is a 762 amino acid protein containing 21 LRR (leucine-rich) repeats, which promote protein-ligand interactions. Chondroadherin, a closely related protein, promotes attachment of chondrocytes, osteoblasts and fibroblasts and also plays an important role in the regulation of chondrocyte proliferation and growth. CHADL is a secreted protein that is located in the extracellular space. There are two isoforms of CHADL that exist as a result of alternative splicing events. Potential negative modulator of chondrocyte differentiation. Inhibits collagen fibrillogenesis in vitro. May influence chondrocyte's differentiation by acting on its cellular collagenous microenvironment.

**Synonyms:**

chondroadherin-like; SLRR4B

**Product images:**

Immunohistochemistry of paraffin-embedded Human colorectal cancer tissue using TA367991 (CHADL Antibody) at dilution 1/30 (Original magnification:  $\times 200$ )



Immunohistochemistry of paraffin-embedded Human colorectal cancer tissue using TA367991 (CHADL Antibody) at dilution 1/30, treated with synthetic peptide. (Original magnification:  $\times 200$ )