

Product datasheet for **TA367987**

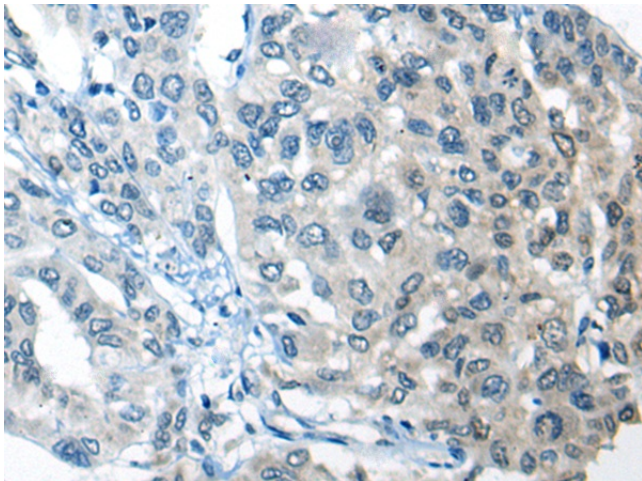
CEP89 Rabbit Polyclonal Antibody

Product data:

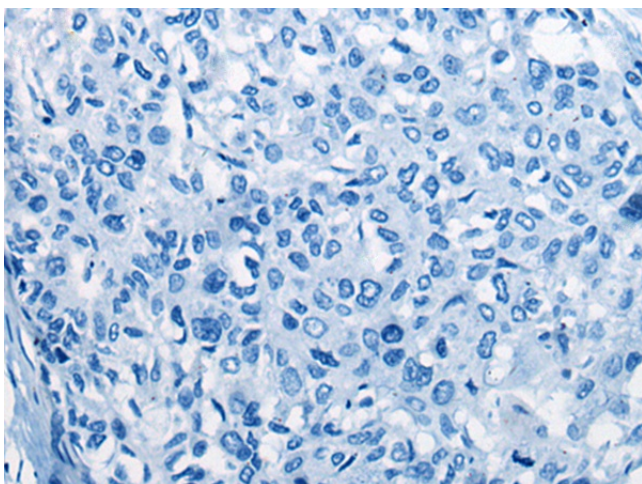
Product Type:	Primary Antibodies
Applications:	IHC
Recommended Dilution:	IHC: 10-50 Positive control: Human liver cancer Predicted cell location: Cytoplasm
Reactivity:	Human, Mouse
Host:	Rabbit
Isotype:	IgG
Clonality:	Polyclonal
Immunogen:	Synthetic peptide of human CEP89
Formulation:	pH7.4 PBS, 0.05% NaN ₃ , 40% Glycerol
Concentration:	lot specific
Purification:	Antigen affinity purification
Conjugation:	Unconjugated
Storage:	Store at -20°C.
Stability:	1 year
Gene Name:	centrosomal protein 89
Database Link:	Entrez Gene 84902 Human Q96ST8
Background:	Required for ciliogenesis. Also plays a role in mitochondrial metabolism where it may modulate complex IV activity.
Synonyms:	CCDC123



[View online »](#)

Product images:

Immunohistochemistry of paraffin-embedded Human liver cancer tissue using TA367987 (CEP89 Antibody) at dilution 1/25 (Original magnification: $\times 200$)



Immunohistochemistry of paraffin-embedded Human liver cancer tissue using TA367987 (CEP89 Antibody) at dilution 1/25, treated with synthetic peptide. (Original magnification: $\times 200$)