

Product datasheet for **TA367986**

CEP27 (HAUS2) Rabbit Polyclonal Antibody

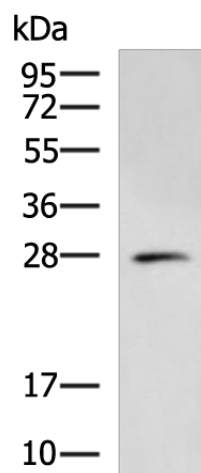
Product data:

Product Type:	Primary Antibodies
Applications:	WB
Recommended Dilution:	WB: 200-1000 WB positive control: Mouse lung tissue lysate
Reactivity:	Human, Mouse
Host:	Rabbit
Isotype:	IgG
Clonality:	Polyclonal
Immunogen:	Synthetic peptide of human HAUS2
Formulation:	pH7.4 PBS, 0.05% NaN ₃ , 40% Glycerol
Concentration:	lot specific
Purification:	Antigen affinity purification
Conjugation:	Unconjugated
Storage:	Store at -20°C.
Stability:	1 year
Predicted Protein Size:	27 kDa
Gene Name:	HAUS augmin like complex subunit 2
Database Link:	Entrez Gene 55142 Human Q9NVX0
Background:	The protein encoded by this gene is a subunit of the augmin complex. The augmin complex plays a role in microtubule attachment to the kinetochore and central spindle formation.
Synonyms:	C15orf25; CEP27; FLJ10460; HsT17025



[View online »](#)

Product images:



Gel: 12%SDS-PAGE

Lysate: 40 μ g

Lane: Mouse lung tissue lysate

Primary antibody: TA367986 (HAUS2 Antibody) at dilution 1/300

Secondary antibody: Goat anti rabbit IgG at 1/5000 dilution

Exposure time: 2 minutes