

Product datasheet for **TA367983**

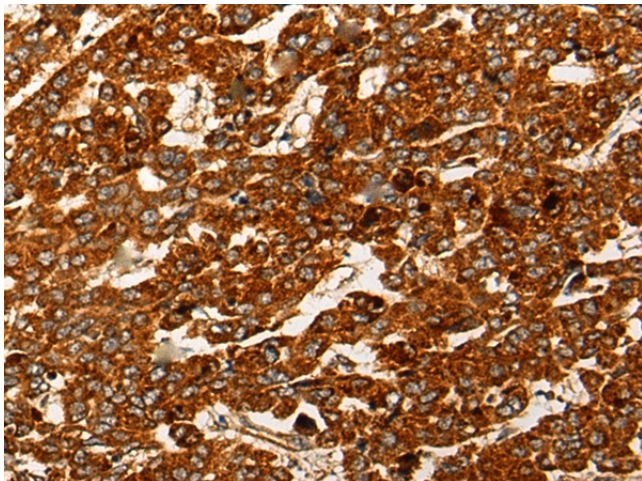
Centlein (CNTLN) Rabbit Polyclonal Antibody

Product data:

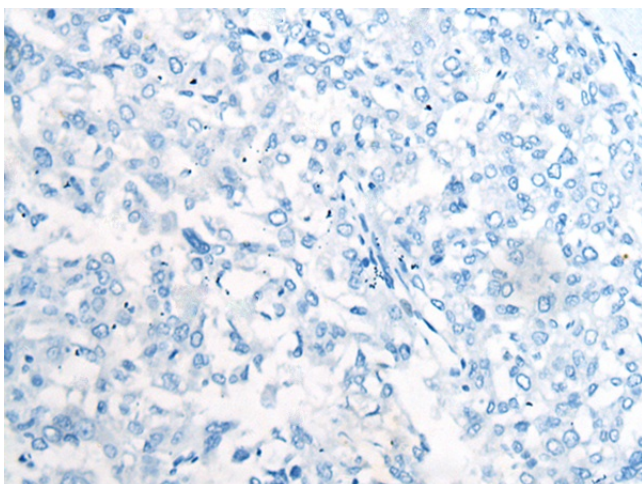
Product Type:	Primary Antibodies
Applications:	IHC
Recommended Dilution:	IHC: 25-100 Positive control: Human liver cancer Predicted cell location: Cytoplasm
Reactivity:	Human, Mouse
Host:	Rabbit
Isotype:	IgG
Clonality:	Polyclonal
Immunogen:	Synthetic peptide of human CNTLN
Formulation:	pH7.4 PBS, 0.05% NaN ₃ , 40% Glycerol
Concentration:	lot specific
Purification:	Antigen affinity purification
Conjugation:	Unconjugated
Storage:	Store at -20°C.
Stability:	1 year
Gene Name:	centlein
Database Link:	Entrez Gene 54875 Human Q9NXG0
Background:	Required for centrosome cohesion and recruitment of CEP68 to centrosomes.
Synonyms:	bA340N12.1; C9orf39; C9orf101; centlein; FLJ20276; FLJ25636; OTTHUMG00000019597; RP11-340N12.1



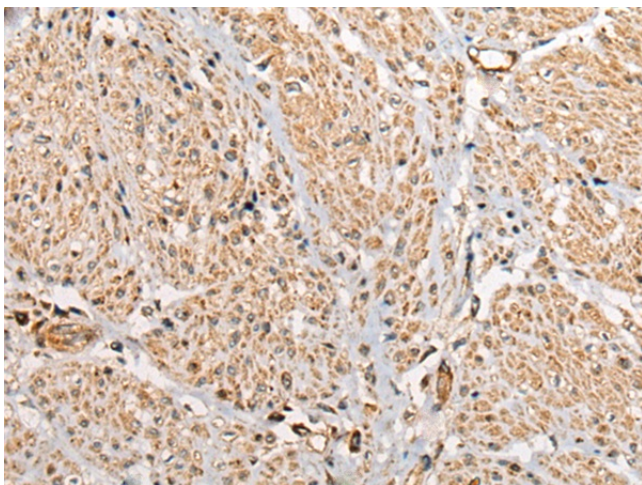
[View online »](#)

Product images:

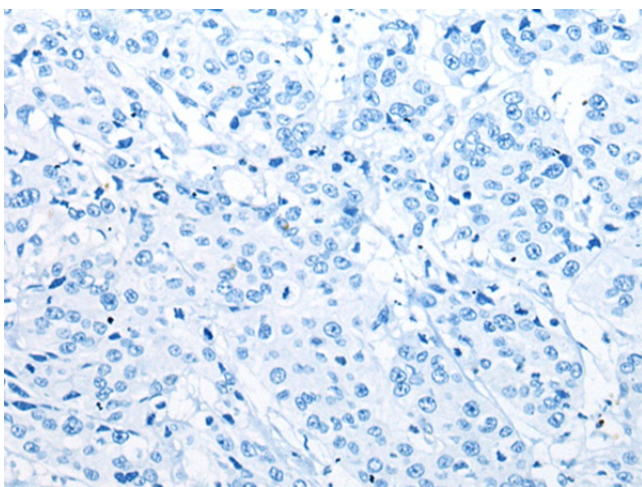
Immunohistochemistry of paraffin-embedded Human liver cancer tissue using TA367983 (CNTLN Antibody) at dilution 1/25 (Original magnification: $\times 200$)



Immunohistochemistry of paraffin-embedded Human liver cancer tissue using TA367983 (CNTLN Antibody) at dilution 1/25, treated with synthetic peptide. (Original magnification: $\times 200$)



Immunohistochemistry of paraffin-embedded Human prostate cancer tissue using TA367983 (CNTLN Antibody) at dilution 1/25 (Original magnification: $\times 200$)



Immunohistochemistry of paraffin-embedded Human prostate cancer tissue using TA367983 (CNTLN Antibody) at dilution 1/25, treated with synthetic peptide. (Original magnification: $\times 200$)