

## Product datasheet for **TA367978S**

### Cell adhesion molecule 2 (CADM2) Rabbit Polyclonal Antibody

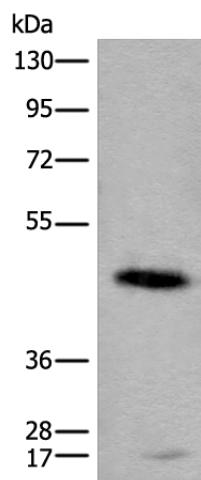
#### Product data:

Product Type:	Primary Antibodies
Applications:	IHC, WB
Recommended Dilution:	WB: 1000-5000 WB positive control: Human cerebella tissue lysate IHC: 30-150 Positive control: Human liver cancer Predicted cell location: Cytoplasm and Cell membrane
Reactivity:	Human, Mouse, Rat
Host:	Rabbit
Isotype:	IgG
Clonality:	Polyclonal
Immunogen:	Synthetic peptide of human CADM2
Formulation:	pH7.4 PBS, 0.05% NaN <sub>3</sub> , 40% Glycerol
Purification:	Antigen affinity purification
Conjugation:	Unconjugated
Storage:	Store at -20°C.
Stability:	1 year
Predicted Protein Size:	48 kDa
Gene Name:	cell adhesion molecule 2
Database Link:	<a href="#">Entrez Gene 253559 Human Q8N3J6</a>
Background:	This gene encodes a member of the synaptic cell adhesion molecule 1 (SynCAM) family which belongs to the immunoglobulin (Ig) superfamily. The encoded protein has three Ig-like domains and a cytosolic protein 4.1 binding site near the C-terminus. Proteins belonging to the protein 4.1 family crosslink spectrin and interact with other cytoskeletal proteins. Multiple transcript variants encoding different isoforms have been found for this gene.
Synonyms:	IGSF4D; MGC104534; MGC138341; MGC138343; Necl-3; NECL3; synCAM2

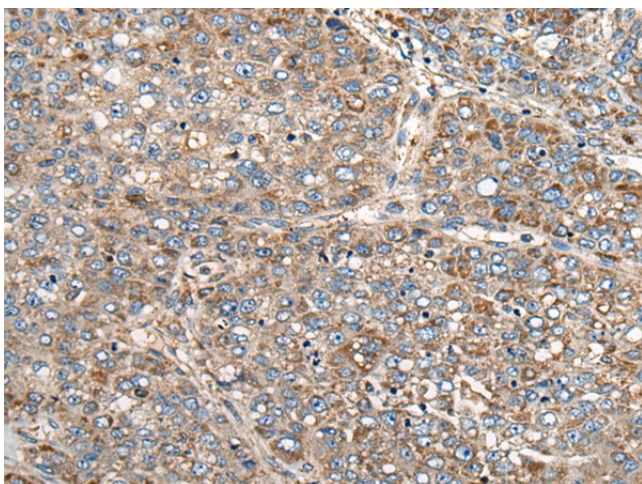


[View online »](#)

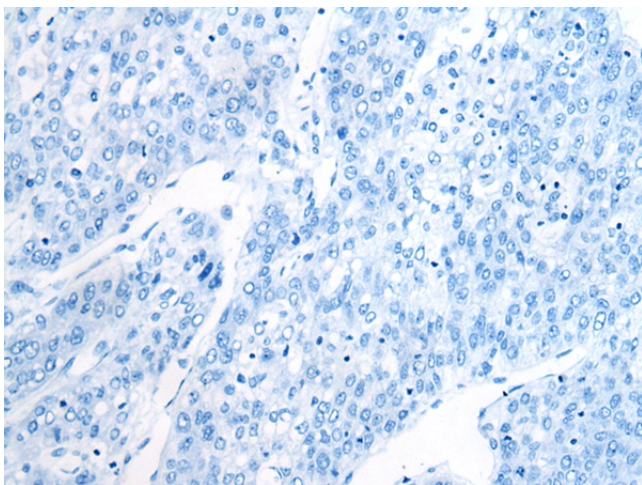
## Product images:



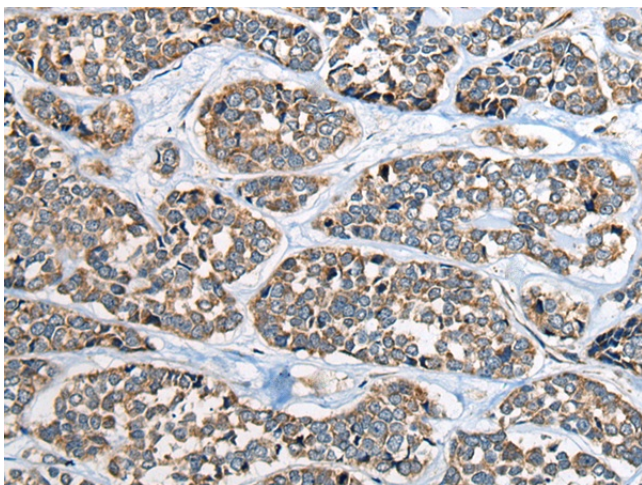
Gel: 8%SDS-PAGE  
Lysate: 20  $\mu$ g  
Lane: Human cerebella tissue lysate  
Primary antibody: [TA367978] (CADM2 Antibody)  
at dilution 1/2000  
Secondary antibody: Goat anti rabbit IgG at  
1/8000 dilution  
Exposure time: 1 second



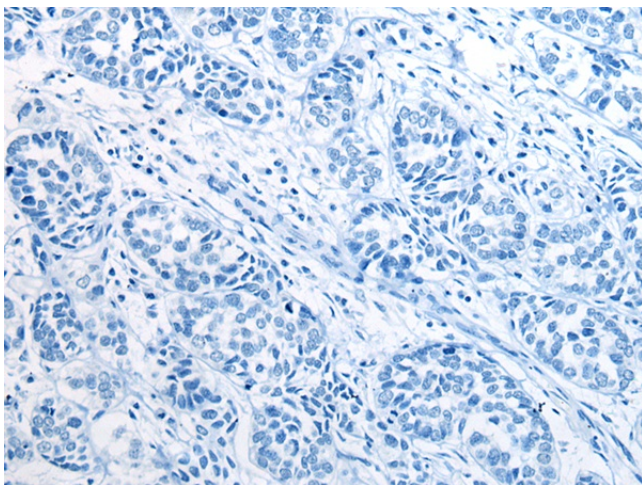
Immunohistochemistry of paraffin-embedded  
Human liver cancer tissue using [TA367978]  
(CADM2 Antibody) at dilution 1/40 (Original  
magnification:  $\times$ 200)



Immunohistochemistry of paraffin-embedded Human liver cancer tissue using [TA367978] (CADM2 Antibody) at dilution 1/40, treated with synthetic peptide. (Original magnification: ×200)



Immunohistochemistry of paraffin-embedded Human esophagus cancer tissue using [TA367978] (CADM2 Antibody) at dilution 1/40 (Original magnification: ×200)



Immunohistochemistry of paraffin-embedded Human esophagus cancer tissue using [TA367978] (CADM2 Antibody) at dilution 1/40, treated with synthetic peptide. (Original magnification: ×200)