

Product datasheet for **TA367976**

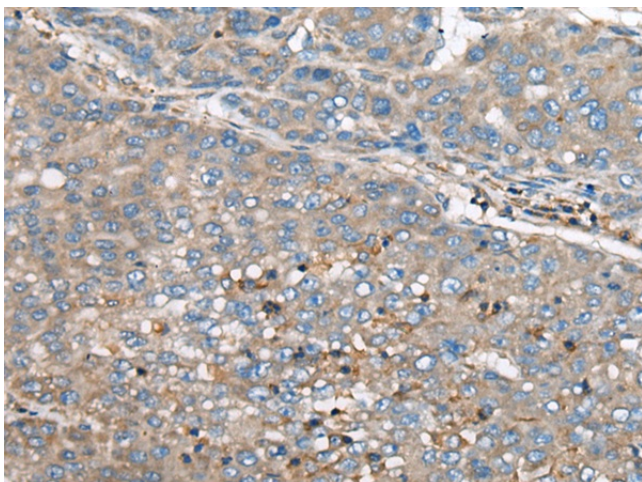
CED6 (GULP1) Rabbit Polyclonal Antibody

Product data:

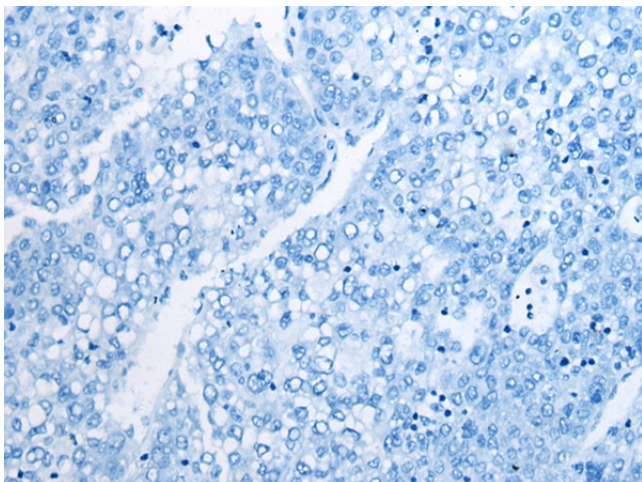
Product Type:	Primary Antibodies
Applications:	IHC
Recommended Dilution:	IHC: 50-300 Positive control: Human liver cancer Predicted cell location: Cytoplasm
Reactivity:	Human, Mouse, Rat
Host:	Rabbit
Isotype:	IgG
Clonality:	Polyclonal
Immunogen:	Synthetic peptide of human GULP1
Formulation:	pH7.4 PBS, 0.05% NaN ₃ , 40% Glycerol
Concentration:	lot specific
Purification:	Antigen affinity purification
Conjugation:	Unconjugated
Storage:	Store at -20°C.
Stability:	1 year
Gene Name:	GULP, engulfment adaptor PTB domain containing 1
Database Link:	Entrez Gene 51454 Human Q9UBP9
Background:	The protein encoded by this gene is an adapter protein necessary for the engulfment of apoptotic cells by phagocytes. Several transcript variants, some protein coding and some thought not to be protein coding, have been found for this gene.
Synonyms:	CED-6; CED6; FLJ31156; GULP; OTTHUMP00000205908; OTTHUMP00000205909; OTTHUMP00000205911



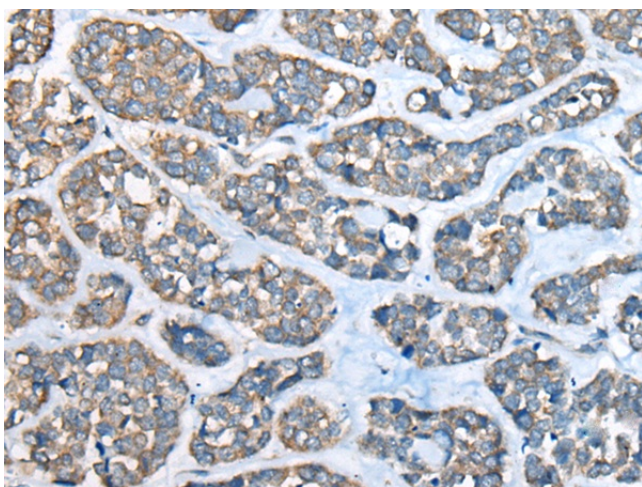
[View online »](#)

Product images:

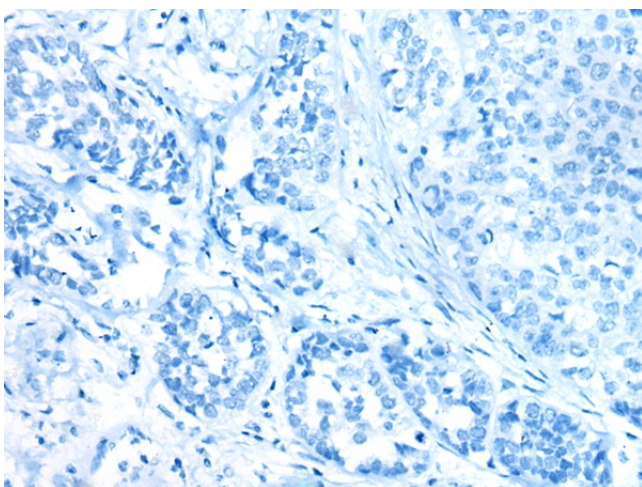
Immunohistochemistry of paraffin-embedded Human liver cancer tissue using TA367976 (GULP1 Antibody) at dilution 1/65 (Original magnification: $\times 200$)



Immunohistochemistry of paraffin-embedded Human liver cancer tissue using TA367976 (GULP1 Antibody) at dilution 1/65, treated with synthetic peptide. (Original magnification: $\times 200$)



Immunohistochemistry of paraffin-embedded Human esophagus cancer tissue using TA367976 (GULP1 Antibody) at dilution 1/65 (Original magnification: $\times 200$)



Immunohistochemistry of paraffin-embedded Human esophagus cancer tissue using TA367976 (GULP1 Antibody) at dilution 1/65, treated with synthetic peptide. (Original magnification: $\times 200$)