

## Product datasheet for **TA367974S**

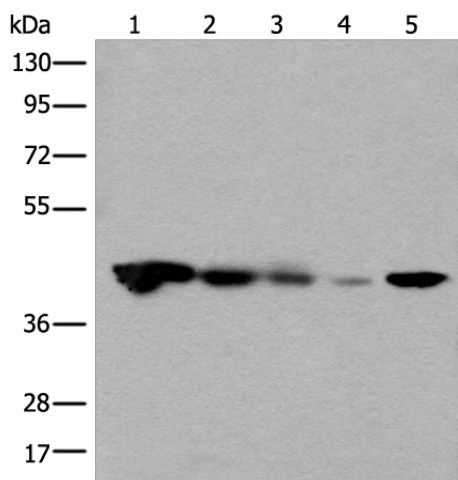
### HDHD5 Rabbit Polyclonal Antibody

#### Product data:

Product Type:	Primary Antibodies
Applications:	WB
Recommended Dilution:	WB: 500-2000 WB positive control: Jurkat, HEPG2 and Hela cell, Human testis tissue, 231 cell lysates
Reactivity:	Human
Host:	Rabbit
Isotype:	IgG
Clonality:	Polyclonal
Immunogen:	Synthetic peptide of human HDHD5
Formulation:	pH7.4 PBS, 0.05% NaN <sub>3</sub> , 40% Glycerol
Purification:	Antigen affinity purification
Conjugation:	Unconjugated
Storage:	Store at -20°C.
Stability:	1 year
Predicted Protein Size:	46 kDa
Gene Name:	cat eye syndrome chromosome region, candidate 5
Database Link:	<a href="#">Entrez Gene 27440 Human Q9BXW7</a>
Background:	Candidate gene for the Cat Eye Syndrome (CES), a developmental disorder associated with the duplication of a 2 Mb region of 22q11.2. Duplication usually takes in the form of a supernumerary bisatellited isodicentric chromosome, resulting in four copies of the region (represents an inv dup(22)(q11)). CES is characterized clinically by the combination of coloboma of the iris and anal atresia with fistula, downslanting palpebral fissures, preauricular tags and/or pits, frequent occurrence of heart and renal malformations, and normal or near-normal mental development.
Synonyms:	CECR5

[View online »](#)

## Product images:



Gel: 8%SDS-PAGE  
 Lysate: 40 µg  
 Lane 1-5: Jurkat  
 HEPG2 and Hela cell  
 Human testis tissue  
 231 cell lysates  
 Primary antibody: [TA367974] (HDHD5 Antibody)  
 at dilution 1/650  
 Secondary antibody: Goat anti rabbit IgG at  
 1/8000 dilution  
 Exposure time: 5 seconds