

## Product datasheet for **TA367973**

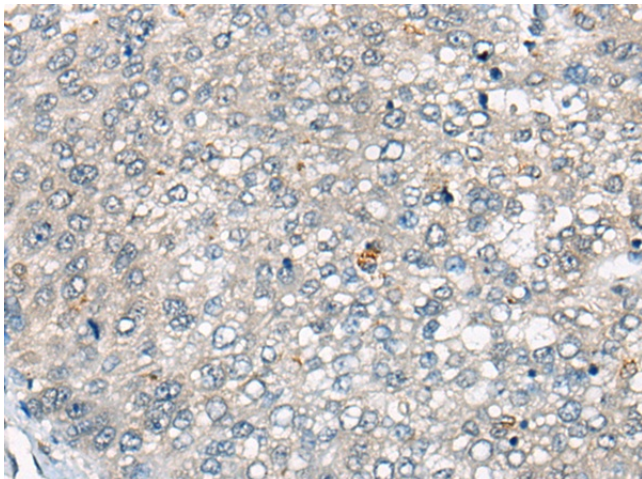
### CDV3 Rabbit Polyclonal Antibody

#### Product data:

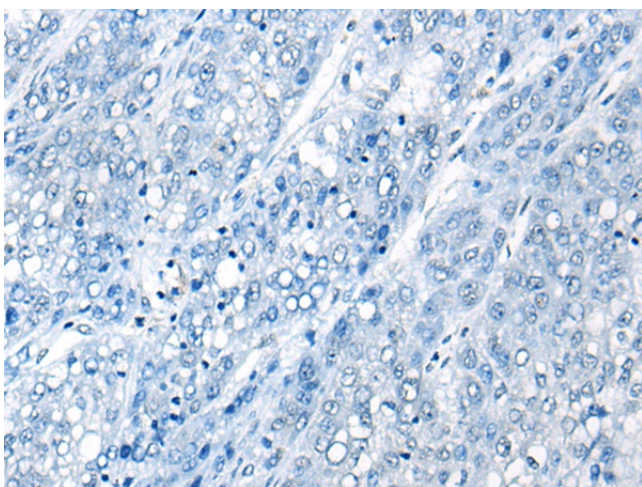
Product Type:	Primary Antibodies
Applications:	IHC
Recommended Dilution:	IHC: 10-50 Positive control: Human liver cancer Predicted cell location: Cytoplasm
Reactivity:	Human, Mouse
Host:	Rabbit
Isotype:	IgG
Clonality:	Polyclonal
Immunogen:	Synthetic peptide of human CDV3
Formulation:	pH7.4 PBS, 0.05% NaN <sub>3</sub> , 40% Glycerol
Concentration:	lot specific
Purification:	Antigen affinity purification
Conjugation:	Unconjugated
Storage:	Store at -20°C.
Stability:	1 year
Gene Name:	CDV3 homolog
Database Link:	<a href="#">Entrez Gene 55573 Human Q9UKY7</a>
Background:	The CDV3 protein is a 258 amino acid protein that localizes in the cytoplasm. It acts as a repressor of Neu and subsequently may be involved in the progression of some cancers, including breast cancer, gliomas and prostate tumors.
Synonyms:	H41



[View online »](#)

**Product images:**

Immunohistochemistry of paraffin-embedded Human liver cancer tissue using TA367973 (CDV3 Antibody) at dilution 1/20 (Original magnification: ×200)



Immunohistochemistry of paraffin-embedded Human liver cancer tissue using TA367973 (CDV3 Antibody) at dilution 1/20, treated with synthetic peptide. (Original magnification: ×200)