

## Product datasheet for **TA367971**

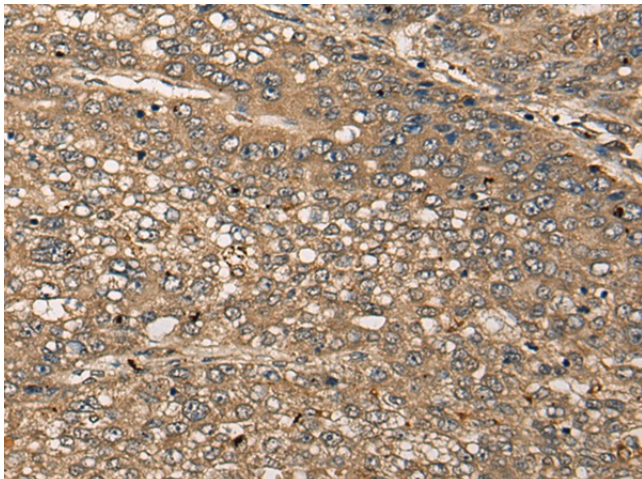
### CDRT15L2 Rabbit Polyclonal Antibody

#### Product data:

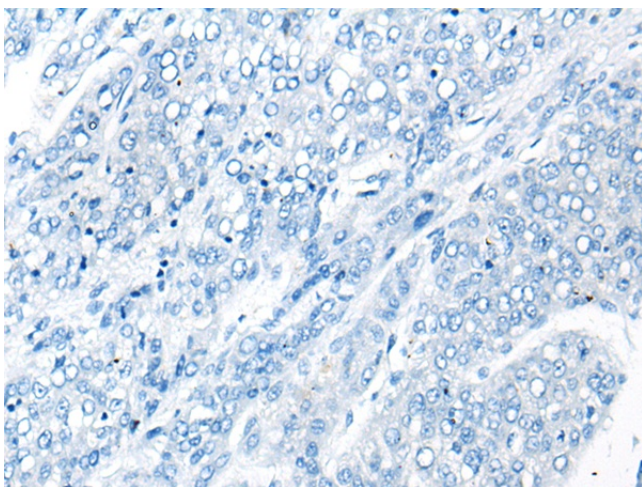
Product Type:	Primary Antibodies
Applications:	IHC
Recommended Dilution:	IHC: 25-100 Positive control: Human liver cancer Predicted cell location: Cell membrane
Reactivity:	Human
Host:	Rabbit
Isotype:	IgG
Clonality:	Polyclonal
Immunogen:	Synthetic peptide of human CDRT15L2
Formulation:	pH7.4 PBS, 0.05% NaN <sub>3</sub> , 40% Glycerol
Concentration:	lot specific
Purification:	Antigen affinity purification
Conjugation:	Unconjugated
Storage:	Store at -20°C.
Stability:	1 year
Gene Name:	CMT1A duplicated region transcript 15-like 2
Database Link:	<a href="#">Entrez Gene 256223 Human</a> <a href="#">A8MXV6</a>
Background:	The function of this protein remains unknown.
Synonyms:	CDRT15L2



[View online »](#)

**Product images:**

Immunohistochemistry of paraffin-embedded Human liver cancer tissue using TA367971 (CDRT15L2 Antibody) at dilution 1/25 (Original magnification:  $\times 200$ )



Immunohistochemistry of paraffin-embedded Human liver cancer tissue using TA367971 (CDRT15L2 Antibody) at dilution 1/25, treated with synthetic peptide. (Original magnification:  $\times 200$ )