

Product datasheet for **TA367968S**

CDKL1 Rabbit Polyclonal Antibody

Product data:

Product Type:	Primary Antibodies
Applications:	IHC, WB
Recommended Dilution:	WB: 200-1000 WB positive control: Human prostate tissue and Human stomach tissue lysates IHC: 20-100 Positive control: Human liver cancer Predicted cell location: Cytoplasm or Nucleus
Reactivity:	Human
Host:	Rabbit
Isotype:	IgG
Clonality:	Polyclonal
Immunogen:	Synthetic peptide of human CDKL1
Formulation:	pH7.4 PBS, 0.05% NaN ₃ , 40% Glycerol
Purification:	Antigen affinity purification
Conjugation:	Unconjugated
Storage:	Store at -20°C.
Stability:	1 year
Predicted Protein Size:	42 kDa
Gene Name:	cyclin dependent kinase like 1
Database Link:	Entrez Gene 8814 Human Q00532



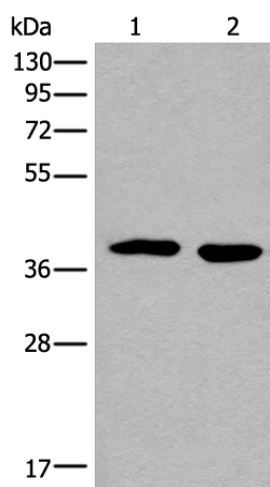
[View online »](#)

Background:

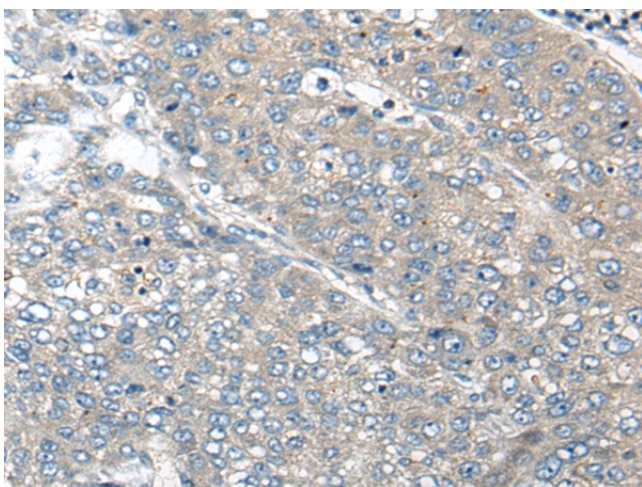
The activation of signal transduction pathways by growth factors, hormones and neurotransmitters is mediated by the MAP kinases ERK 1 and ERK 2. ERK proteins are regulated by dual phosphorylation at specific tyrosine and threonine sites mapping within a characteristic Thr-Glu-Tyr motif. The protein kinase p56 KKIAMRE is distantly related to the MAP kinase group of proteins and is closely related to p42 KKIALLRE. KKIAMRE is predominantly expressed in testis, kidney, brain and lung. KKIAMRE contains the conserved MAP kinase dual phosphorylation motif in the sequence Thr-Asp-Tyr and is activated by treatment of cells by EGF. However, unlike other MAP kinases, the EGF-stimulated kinase activity does not require phosphorylation of KKIAMRE and KKIALLRE in the Thr-Asp-Tyr motif.

Synonyms:

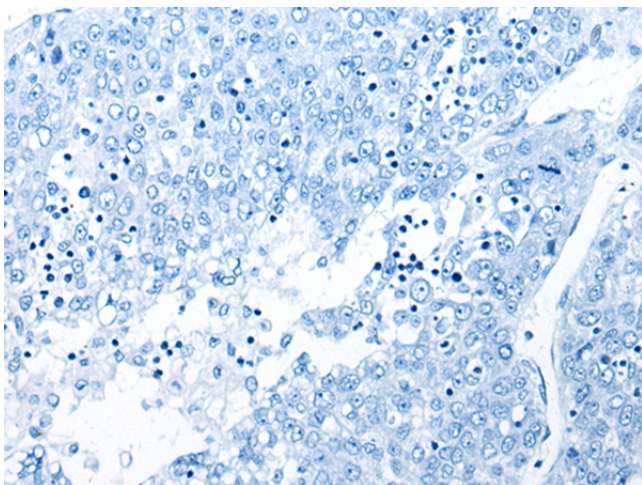
KKIALLRE; P42

Product images:

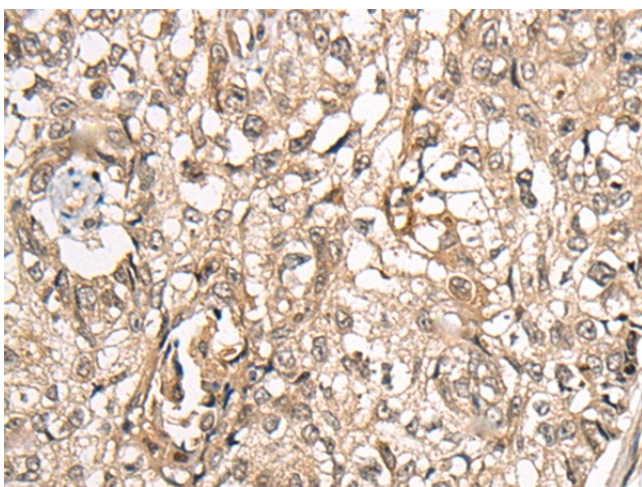
Gel: 8%SDS-PAGE
Lysate: 40 µg
Lane 1-2: Human prostate tissue and Human stomach tissue lysates
Primary antibody: [TA367968] (CDKL1 Antibody) at dilution 1/200
Secondary antibody: Goat anti rabbit IgG at 1/8000 dilution
Exposure time: 1 minute



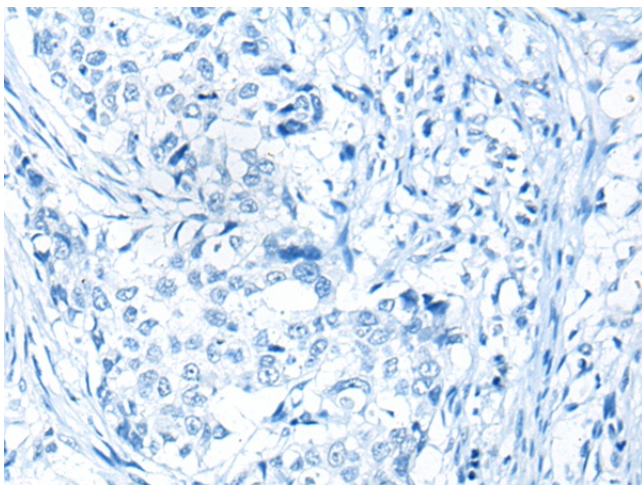
Immunohistochemistry of paraffin-embedded Human liver cancer tissue using [TA367968] (CDKL1 Antibody) at dilution 1/20 (Original magnification: ×200)



Immunohistochemistry of paraffin-embedded Human liver cancer tissue using [TA367968] (CDKL1 Antibody) at dilution 1/20, treated with synthetic peptide. (Original magnification: ×200)



Immunohistochemistry of paraffin-embedded Human lung cancer tissue using [TA367968] (CDKL1 Antibody) at dilution 1/20 (Original magnification: ×200)



Immunohistochemistry of paraffin-embedded Human lung cancer tissue using [TA367968] (CDKL1 Antibody) at dilution 1/20, treated with synthetic peptide. (Original magnification: ×200)