

## Product datasheet for **TA367948**

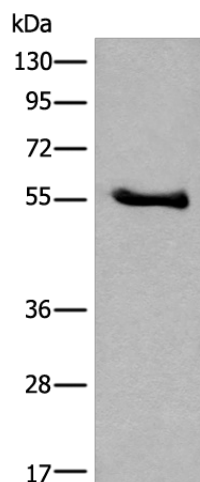
### CCDC85C Rabbit Polyclonal Antibody

#### Product data:

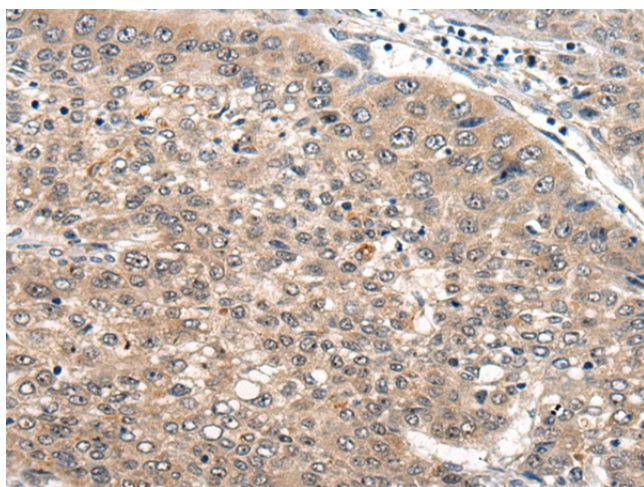
Product Type:	Primary Antibodies
Applications:	IHC, WB
Recommended Dilution:	WB: 200-1000 WB positive control: Human breast cancer tissue lysate IHC: 20-100 Positive control: Human liver cancer Predicted cell location: Cell junction
Reactivity:	Human, Mouse
Host:	Rabbit
Isotype:	IgG
Clonality:	Polyclonal
Immunogen:	Synthetic peptide of human CCDC85C
Formulation:	pH7.4 PBS, 0.05% NaN <sub>3</sub> , 40% Glycerol
Concentration:	lot specific
Purification:	Antigen affinity purification
Conjugation:	Unconjugated
Storage:	Store at -20°C.
Stability:	1 year
Predicted Protein Size:	45 kDa
Gene Name:	coiled-coil domain containing 85C
Database Link:	<a href="#">Entrez Gene 317762 Human A6NKD9</a>
Background:	CCDC85C may play an important role in cortical development, especially in the maintenance of radial glia.
Synonyms:	FLJ22558; MGC117455



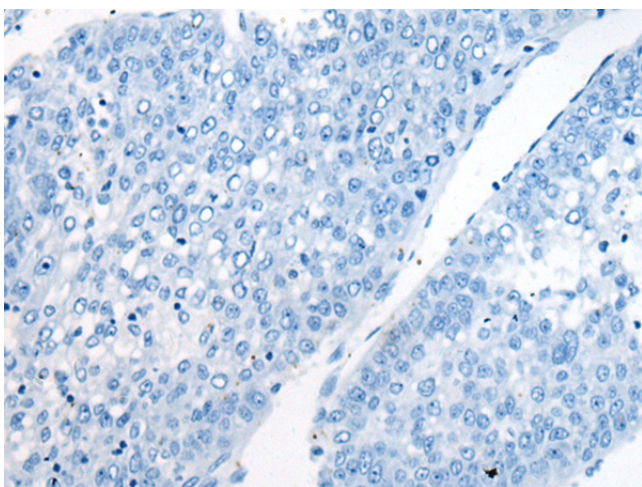
[View online »](#)

**Product images:**

Gel: 8%SDS-PAGE  
Lysate: 40  $\mu$ g  
Lane: Human breast cancer tissue lysate  
Primary antibody: TA367948 (CCDC85C Antibody)  
at dilution 1/250  
Secondary antibody: Goat anti rabbit IgG at  
1/8000 dilution  
Exposure time: 5 minutes



Immunohistochemistry of paraffin-embedded  
Human liver cancer tissue using TA367948  
(CCDC85C Antibody) at dilution 1/20 (Original  
magnification:  $\times$ 200)



Immunohistochemistry of paraffin-embedded Human liver cancer tissue using TA367948 (CCDC85C Antibody) at dilution 1/20, treated with synthetic peptide. (Original magnification: ×200)