

## Product datasheet for **TA367942**

### CBF (CEBPZ) Rabbit Polyclonal Antibody

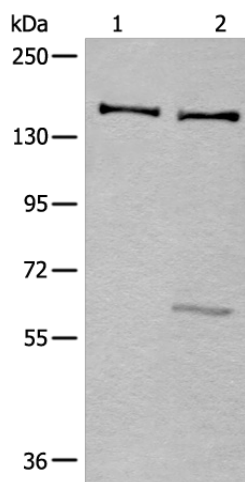
#### Product data:

Product Type:	Primary Antibodies
Applications:	IHC, WB
Recommended Dilution:	WB: 200-1000 WB positive control: K562 and Hela cell lysates IHC: 20-100 Positive control: Human prostate cancer Predicted cell location: Nucleus
Reactivity:	Human
Host:	Rabbit
Isotype:	IgG
Clonality:	Polyclonal
Immunogen:	Synthetic peptide of human CEBPZ
Formulation:	pH7.4 PBS, 0.05% NaN <sub>3</sub> , 40% Glycerol
Concentration:	lot specific
Purification:	Antigen affinity purification
Conjugation:	Unconjugated
Storage:	Store at -20°C.
Stability:	1 year
Predicted Protein Size:	121 kDa
Gene Name:	CCAAT/enhancer binding protein zeta
Database Link:	<a href="#">Entrez Gene 10153 Human Q03701</a>
Background:	Stimulates transcription from the HSP70 promoter.
Synonyms:	CBF; CBF2; CTF2; HSP-CBF; NOC1



[View online »](#)

## Product images:



Gel: 6%SDS-PAGE

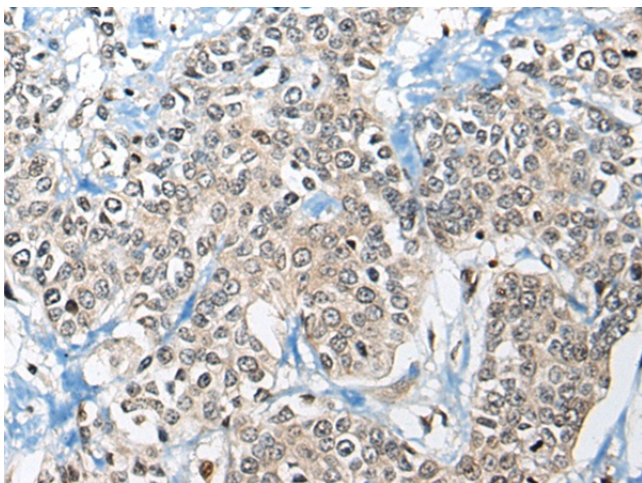
Lysate: 40  $\mu$ g

Lane 1-2: K562 and HeLa cell lysates

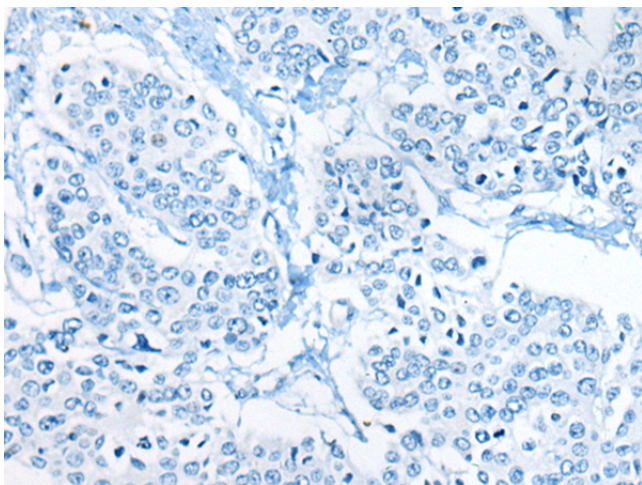
Primary antibody: TA367942 (CEBPZ Antibody) at dilution 1/200

Secondary antibody: Goat anti rabbit IgG at 1/8000 dilution

Exposure time: 1 minute



Immunohistochemistry of paraffin-embedded Human prostate cancer tissue using TA367942 (CEBPZ Antibody) at dilution 1/20 (Original magnification:  $\times$ 200)



Immunohistochemistry of paraffin-embedded Human prostate cancer tissue using TA367942 (CEBPZ Antibody) at dilution 1/20, treated with synthetic peptide. (Original magnification:  $\times 200$ )