

## Product datasheet for **TA367936**

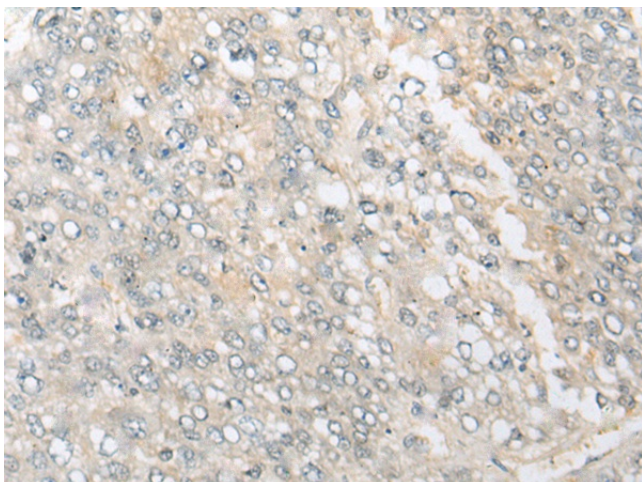
### CAMSAP1 Rabbit Polyclonal Antibody

#### Product data:

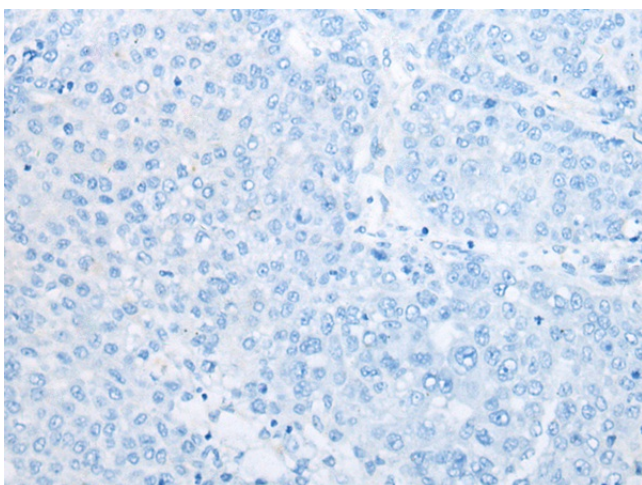
Product Type:	Primary Antibodies
Applications:	IHC
Recommended Dilution:	IHC: 25-100 Positive control: Human liver cancer Predicted cell location: Cytoplasm
Reactivity:	Human, Mouse, Rat
Host:	Rabbit
Isotype:	IgG
Clonality:	Polyclonal
Immunogen:	Synthetic peptide of human CAMSAP1
Formulation:	pH7.4 PBS, 0.05% NaN <sub>3</sub> , 40% Glycerol
Concentration:	lot specific
Purification:	Antigen affinity purification
Conjugation:	Unconjugated
Storage:	Store at -20°C.
Stability:	1 year
Gene Name:	calmodulin regulated spectrin associated protein 1
Database Link:	<a href="#">Entrez Gene 157922 Human Q5T5Y3</a>
Background:	Probable microtubule-binding protein that plays a role in the regulation of cell morphology and cytoskeletal organization. Through interaction with spectrin may regulate neurite outgrowth.
Synonyms:	bA100C15.1; DKFZp434F195; DKFZp434G2311; FLJ31228; MGC163452; PRO2405



[View online »](#)

**Product images:**

Immunohistochemistry of paraffin-embedded Human liver cancer tissue using TA367936 (CAMSAP1 Antibody) at dilution 1/40 (Original magnification:  $\times 200$ )



Immunohistochemistry of paraffin-embedded Human liver cancer tissue using TA367936 (CAMSAP1 Antibody) at dilution 1/40, treated with synthetic peptide. (Original magnification:  $\times 200$ )