

## Product datasheet for **TA367934S**

### **CAMK2G Rabbit Polyclonal Antibody**

#### **Product data:**

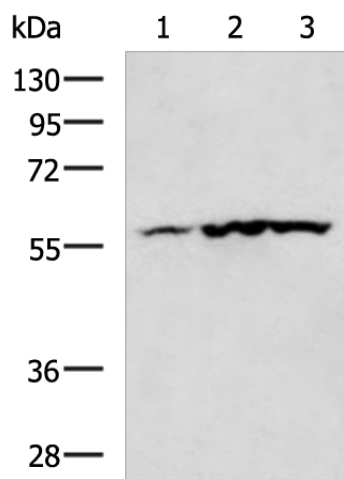
<b>Product Type:</b>	Primary Antibodies
<b>Applications:</b>	IHC, WB
<b>Recommended Dilution:</b>	WB: 500-2000 WB positive control: Mouse heart tissue, Human heart tissue, Rat heart tissue lysates IHC: 25-50 Positive control: Human liver cancer Predicted cell location: Cytoplasm
<b>Reactivity:</b>	Human, Mouse, Rat
<b>Host:</b>	Rabbit
<b>Isotype:</b>	IgG
<b>Clonality:</b>	Polyclonal
<b>Immunogen:</b>	Synthetic peptide of human CAMK2G
<b>Formulation:</b>	pH7.4 PBS, 0.05% NaN <sub>3</sub> , 40% Glycerol
<b>Purification:</b>	Antigen affinity purification
<b>Conjugation:</b>	Unconjugated
<b>Storage:</b>	Store at -20°C.
<b>Stability:</b>	1 year
<b>Predicted Protein Size:</b>	63 kDa
<b>Gene Name:</b>	calcium/calmodulin dependent protein kinase II gamma
<b>Database Link:</b>	<a href="#">Entrez Gene 818 Human Q13555</a>
<b>Background:</b>	The product of this gene is one of the four subunits of an enzyme which belongs to the serine/threonine protein kinase family, and to the Ca(2+)/calmodulin-dependent protein kinase subfamily. Calcium signaling is crucial for several aspects of plasticity at glutamatergic synapses. In mammalian cells the enzyme is composed of four different chains: alpha, beta, gamma, and delta. The product of this gene is a gamma chain. Many alternatively spliced transcripts encoding different isoforms have been described but the full-length nature of all the variants has not been determined.



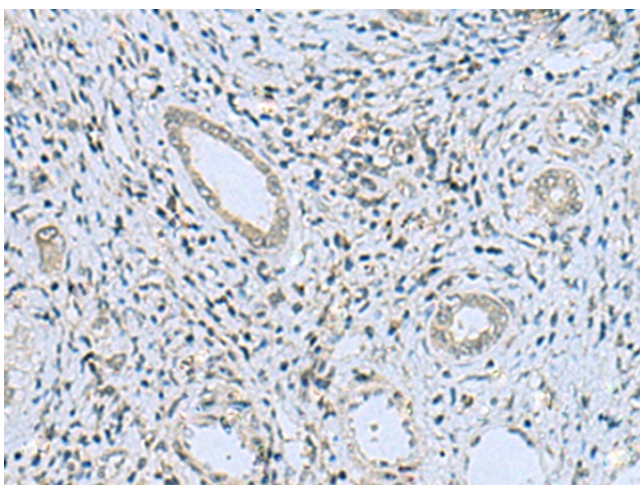
[View online »](#)

Synonyms: CAMK; CAMK-II; CAMKG; FLJ16043; MGC26678

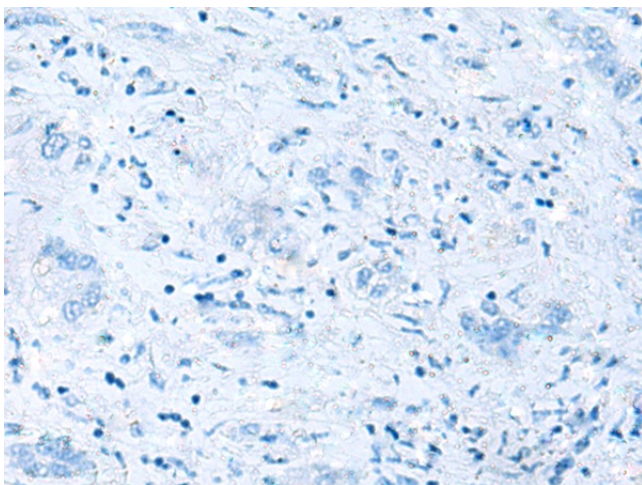
**Product images:**



Gel: 8%SDS-PAGE  
 Lysate: 40 µg  
 Lane 1-3: Mouse heart tissue  
 Human heart tissue  
 Rat heart tissue lysates  
 Primary antibody: [TA367934] (CAMK2G Antibody) at dilution 1/400  
 Secondary antibody: Goat anti rabbit IgG at 1/5000 dilution  
 Exposure time: 1 minute



Immunohistochemistry of paraffin-embedded Human liver cancer tissue using [TA367934] (CAMK2G Antibody) at dilution 1/20 (Original magnification: ×200)



Immunohistochemistry of paraffin-embedded Human liver cancer tissue using [TA367934] (CAMK2G Antibody) at dilution 1/20, treated with synthetic peptide. (Original magnification:  $\times 200$ )